

# American Board of Pathology

One Urban Centre, Suite 690  
4830 West Kennedy Boulevard  
Tampa, Florida 33609  
<https://www.abpath.org>

## Annual Report

# 24



# Welcome

# 2024

The American Board of Pathology has been setting the standard for pathology certification since 1936, ensuring that board-certified pathologists meet the highest levels of competency to serve patients and the public.

This 2024 Annual Report chronicles our substantial accomplishments, including the successful launch of our Histology Primer, the addition of two new Cooperating Societies, and the implementation of innovative assessment tools that better prepare our candidates for the challenges of modern pathology practice.

Our impact continues to grow. In 2024, we certified 1,039 new diplomates across primary and subspecialty areas, bringing our total number of certificates issued since 1936 to over 58,000. With 12,210 diplomates actively enrolled in our Continuing Certification Program, we demonstrate our commitment to lifelong learning and professional development.

As we navigate an evolving healthcare landscape, the ABPath remains steadfast in our vision to improve public health by promoting excellence in pathology practice. The initiatives highlighted in this report—from enhanced examination content specifications to expanded educational resources—position us well for the challenges and opportunities ahead.

We extend our deepest gratitude to our volunteers, staff, Cooperating Societies, and the entire pathology community for their continued support and dedication to our shared mission.

Together, we are building a stronger future for pathology.

# Contents

## TABLE OF CONTENTS

---

President's Message	04
About	05
Accomplishments	06
Examinations	10
New Diplomates in 2024	14
2024 Financials	18
Publications	20
Cooperating Societies	22
Governance	24
Volunteers	26

# President's Message



**Barbara Sampson, MD, PhD**  
**2024 PRESIDENT,**  
**ABPath**

Dr. Barbara Sampson is a forensic and cardiovascular pathologist currently working at Boston Children's Hospital and the NYC Office of Chief Medical Examiner. She previously served as Chief Medical Examiner of New York City from 2013-2020, becoming the first woman to hold this position. Previously, she served as Vice Chair of Pathology for Strategic Initiatives and Academic Affairs at the Icahn School of Medicine at Mount Sinai.

## "ONE OF THE GREATEST HONORS OF MY CAREER"

One of the greatest honors of my career has been to serve as President in 2024. Under the extraordinary vision and leadership of Dr. Gary Procop, ABPath has initiated and continued a number of new projects to better serve our diplomates and diplomates to be.

Transparency and heightened communication have been major guiding principles for what we do. The continued success of our *Speakers' Bureau* has sparked many interesting conversations and ideas with our stakeholders, while taking some of the mystery out of exam preparation and ABPath Certlink®. The *Histology Primer* has extended our outreach beyond first-year pathology residents to medical students. We have also been participating in the Promoting Professionalism Collaborative through the American Board of Medical Specialties (ABMS), which has challenged us to think more creatively about how we can help set a higher bar for all pathologists in this area. As a small first step, we have added Professionalism questions to ABPath Certlink®. In our ongoing efforts to expand ABPath's inclusivity within the broad field of pathology, we welcomed the *Association of Pathology Informatics* and the *Society for Cardiovascular Pathology* as our newest co-operating societies.

This year, we did a deep dive into the role of AI broadly in pathology and, more specifically, into how ABMS Boards have

successfully incorporated AI in many areas, including question generation. While there is absolutely no substitute for subject matter experts, we are interested in how AI can streamline some of our processes and make us both more efficient and effective.

Several enhancements to our website have recently been made. One new page features a listing of *Guidelines and Key Manuscripts* offering important references that may be useful for both trainees and practitioners in the study of pathology. Another page highlights terminology updates, which reflect changes in current guidelines that may be seen on board certification exams. Subject matter experts will review and update these annually. The *Content Specification* project is progressing steadily. Drafts are available on our website, and I encourage you to review them and provide feedback. Our work with in-training and competency-based assessment pilots continues with the goal of better aligning training and certification. Our first pilots will focus on parasitology, renal pathology, and informatics. Someday, we hope to incorporate such innovations into the certification process.

It is with great pride and enthusiasm that I welcome our new President, Dr. Mohiedean Gohfrani. I am confident that he will continue to foster all these initiatives, and I look forward to an exciting future.

*Barbara Sampson*

# About

## THE AMERICAN BOARD OF PATHOLOGY

The American Board of Pathology (ABPath) was established in 1936 to advance the specialty of pathology and ensure the competence of pathologists for the benefit of the public. Certification by the ABPath is a hallmark of public and professional trust. As we face new challenges in healthcare, the vital role of board-certified pathologists is more important than ever.

ABPath issues primary certificates in Anatomic and Clinical Pathology, Anatomic Pathology, Clinical Pathology, Anatomic Pathology/Neuropathology, and certification in eleven subspecialties.

Our Mission and Vision statements exemplify our commitment to promote excellence in pathology and maintain the highest standards of care.



### WHAT WE DO

The American Board of Pathology issues primary certificates in Anatomic and Clinical Pathology, Anatomic Pathology, Clinical Pathology, Anatomic Pathology/Neuropathology, and certification in eleven subspecialties.



### MISSION

The mission of the American Board of Pathology, a member of the American Board of Medical Specialties, is to serve the public and advance the profession of pathology by setting certification standards and promoting lifelong competency of pathologists.



### VISION

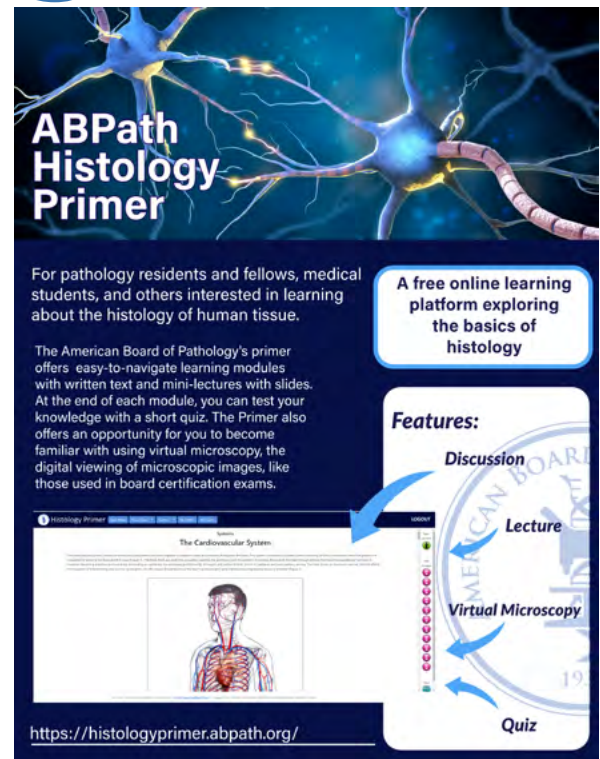
The American Board of Pathology improves the health of the public by promoting excellence in the practice of pathology.

# 2024 Highlights

## ABPath Launches Histology Primer

In February 2024, ABPath launched the new Histology Primer, an online learning platform exploring the basics of histology. The primer is specifically designed to familiarize pathology residents, medical students, and others interested in learning about the histology of human tissue.

ABPath developed the learning platform with pathology residents in mind as they embark on their training journey, offering a solid foundation in understanding human tissue structures before delving into the many disciplines of Pathology. Additionally, medical students exploring the field of pathology will find this tool particularly helpful in gaining insights into the basics of histology. Read more at <https://abpath.org/2024/02/abpath-introduces-the-histology-primer/>



The graphic features a background image of a neuron. At the top, the title "ABPath Histology Primer" is displayed. Below the title, a text block states: "For pathology residents and fellows, medical students, and others interested in learning about the histology of human tissue." To the right of this text is a box that reads: "A free online learning platform exploring the basics of histology". Below the main text block, a paragraph describes the primer's content: "The American Board of Pathology's primer offers easy-to-navigate learning modules with written text and mini-lectures with slides. At the end of each module, you can test your knowledge with a short quiz. The Primer also offers an opportunity for you to become familiar with using virtual microscopy, the digital viewing of microscopic images, like those used in board certification exams." To the right of this paragraph is a box titled "Features:" which lists "Discussion", "Lecture", "Virtual Microscopy", and "Quiz" with arrows pointing to a central image of a human torso showing the cardiovascular system. At the bottom left, the URL "https://histologyprimer.abpath.org/" is provided.

**ABPath Histology Primer**

For pathology residents and fellows, medical students, and others interested in learning about the histology of human tissue.

The American Board of Pathology's primer offers easy-to-navigate learning modules with written text and mini-lectures with slides. At the end of each module, you can test your knowledge with a short quiz. The Primer also offers an opportunity for you to become familiar with using virtual microscopy, the digital viewing of microscopic images, like those used in board certification exams.

**Features:**

- Discussion
- Lecture
- Virtual Microscopy
- Quiz

<https://histologyprimer.abpath.org/>



## Welcome New Trustee Dylan V. Miller, MD

The Trustees of the American Board of Pathology (AB-Path) were pleased to announce the election of Dr. Dylan V. Miller to serve on the Board of Trustees with a term that began on January 1, 2025.

Dr. Miller is a Professor of Pathology at the University of Utah School of Medicine and the Director of Anatomic Pathology at Intermountain Central Laboratory, which serves Intermountain Healthcare's statewide hospital system. He practices with a private group at Intermountain Medical Center in Salt Lake City. Dr. Miller earned his MD from the University of Utah School of Medicine and completed his residency and surgical pathology fellowship at the Mayo Clinic in Rochester, MN. Dr. Miller is board-certified in Anatomic and Clinical Pathology and participates in the Continuing Certification Program.

The full announcement can be found at:  
<https://abpath.org/2024/08/abpath-welcomes-new-board-member-dylan-v-miller-md/>



## Designation of Dr. Glassy as a Life Trustee

The Board of Trustees voted to designate Dr. Eric Glassy as a Life Trustee for his many years of dedicated service and contributions to the Board. Dr. Glassy finished his final term as a Trustee at the end of 2024 but has generously offered to provide his expertise and assistance to the Board on specific initiatives. He will be officially honored at a future Board meeting.



## Association of Pathology Informatics and Society for Cardiovascular Pathology as New Cooperating Societies

We were pleased to welcome the *Association for Pathology Informatics* (API) and the *Society for Cardiovascular Pathology* (SCVP) as the most recent additions of the Cooperating Societies with the ABPath.

The API is a not-for-profit organization that seeks to advance pathology informatics. Pathology informatics has been increasing in importance as the demand for, and development of, information systems and technology con-

tinue to address healthcare industry needs.

Beginning with the collection, processing, and analysis of patient specimens, the field of pathology, as a whole, generates significant amounts of data that require careful interpretation and reliable distribution to fulfill the core mission of supporting patient care.

The SCVP is devoted to the advancement of the study of cardiovascular disorders. Founded in 1985, the society has grown from a small collaborative group to a leading interdisciplinary organization, bringing together physicians and scientists. Its members are united by a shared commitment to advancing the study of cardiovascular disease, and establishing cardiovascular pathology as a critical and dynamic medical specialty through collaborative research, education, and professional exchange.



## Launch of Content Specifications for Certification Exams

In November, we were excited to open the Public Comment Period for the *Content Specifications for Certification Exams*. This initiative represents over eighteen months of dedicated work by our Test Development and Advisory Committees (TDAC), Trustees, and ABPath Staff. Now that the public comment period has

closed, we are reviewing all feedback and will adjust the Content Specifications accordingly. We thank everyone who provided comments for their time and thoughtful feedback.

We encourage residents and fellows to use the Content Specifications as a

general study guide for the 2025 certification exams, but please recognize that these are not the final version of the documents.

The draft Content Specifications can be found [here](#).





## Launch of Guidelines and Key Manuscripts

November marked the launch of another valuable resource—the *Guidelines and Key Manuscripts* webpage. This

curated collection offers essential references and guidelines across various pathology subspecialties, supporting

both trainees and practicing pathologists in their studies and practice. See the full announcement and link [here](#).



Dr. Ritu Nayar at Houston Methodist Hospital

## Implemented the Trustee Speakers Bureau

In 2024, the *Trustees Speakers Bureau* program was officially relaunched to strengthen the Board's connection with pathology training programs. ABPath Trustees or the ABPath CEO visit programs either in person or virtually to provide an overview of the Board, updates on Board initiatives, and answer questions about board certifica-

tion. The goal is to visit each program once every four years in an effort to connect with each resident before their completion of training. Programs will be contacted by the Board to schedule presentations. In 2024, we visited 25 different training programs throughout the country.



Dr. Sampson at Beth Israel Deaconess Hospital

# Examinations

## Administration History of ABPath Certification Examinations

ABPath offers four Primary certificates and 11 Subspecialty certificates in pathology. This table reflects the dates we began offering each primary and sub-specialty certification and the number of certificates issued from inception through 2024. Over 58,000 certificates have been issued since 1936.

Certification	Initial Year	Number of Certificates
Anatomic Pathology (AP)	1936	9,857
Anatomic Pathology and Clinical Pathology (AP/CP)	1936	26,169
Anatomic Pathology and Neuropathology (AP/NP)	1961	461
Clinical Pathology (CP)	1936	4,080
Blood Banking/Transfusion Medicine (BB/TM)	1973	1,751
Chemical Pathology (CH)	1951	182
Clinical Informatics (CI)	2013	252
Cytopathology (CY)	1989	5,088
Dermatopathology (DP)	1974	1,949
Forensic Pathology (FP)	1959	1,920
Hematopathology (HP)	1955	3,739
Medical Microbiology (MB)	1950	414
Molecular Genetic Pathology (MG)	2001	882
Neuropathology (NP)	1948	675
Pediatric Pathology (PP)	1990	648



## 2024 Primary Examination Statistics

The ABPath uses criterion-referenced scoring for its certification examinations.

Setting the criterion standard for each exam is performed every 3-5 years. The number of candidates passing the examinations may not match the number of candidates certified for several reasons:

1. Some AP/CP candidates, both first-time takers and repeaters, take only one portion (either AP or CP) of the examination. These candidates are not certified until both AP and CP are passed.

2. Certified candidates include AP/CP candidates who passed either the AP or CP examination previously and requested single certification during the reporting year.

3. Certified candidates also include candidates who passed the examinations in a previous year but did not provide documentation of licensure or other required information until the reporting year.

See the [ABPath Website](#) for more examination information.

## 2024 Primary Examination

### 2024 Candidates and Pass Rates

	Total Candidates			First-Time Takers			Repeaters		
	#	# Pass	% Pass	#	# Pass	% Pass	#	# Pass	% Pass
AP	686	519	76%	551	473	86%	135	46	34%
CP	574	483	84%	527	467	89%	47	16	34%

### 5-Year Certified Report

Primary	2020	2021	2022	2023	2024
APCP	397	533	500	477	427
AP only	73	105	100	75	71
CP only	25	55	54	55	50
APNP	8	17	7	5	10

### Primary Exam Pass Rates

Primary	2020 % Pass	2021 % Pass	2022 % Pass	2023 % Pass	2024 % Pass
AP only	85	82	87*	84	81
CP only	88	94	94*	94	88

\*New criterion standard applied

% Pass= Spring exam pass rate

## Subspecialty Certification Examinations

### 2024 Candidates and Pass Rates

	Total Candidates			First-Time Takers			Repeaters		
	#	# Pass	% Pass	#	# Pass	% Pass	#	# Pass	% Pass
BB/TM	56	49	88	53	48	91	3	1	33
CH	1	-	-	1	-	-	-	-	-
CI	34	25	74	31	24	77	3	1	33
CY	106	87	82	93	80	86	13	7	54
DP	44	40	91	39	35	90	5	5	100
FP	67	58	87	64	56	88	3	2	67
HP	136	128	94	126	121	96	10	7	70
MB	8	6	75	8	75	75	-	-	-
MG	56	44	79	55	80	80	1	0	0
NP	30	30	100	28	100	100	2	2	100
PP	17	14	82	16	88	88	1	0	0
FPCLinMB*	-	-	-	-	-	-	-	-	-

\*FPCLinMB = Focus Practice Designation-Clinical Microbiology

### 5-Year Certified Report

Subspecialty	2020	2021	2022	2023	2024
BB/TM	39	39	29	58	49
CH	2	-	-	-	-
CI	17	27	25	17	25
CY	104	109	115	117	87
DP	34	41	43	45	40
FP	47	38	53	55	58
HP	116	108	110	133	129
MB	6	18	10	11	6
MG	48	49	51	59	44
NP	17	11	16	21	20
PP	16	20	18	21	14
FPCLinMB*	-	1	-	-	-

\*FPCLinMB = Focus Practice Designation-Clinical Microbiology

### Subspecialty Examinations Pass Rates

Subspecialty	2020 % Pass	2021 % Pass	2022 % Pass	2023 % Pass	2024 % Pass
BB/TM	89*	81	62	97	88
CH	100	-	-	-	-
CI	89	77	66	77	74
CY	86*	86	83	89	82
DP	95	87	93*	90	91
FP	89*	95	98	90*	87
HP	94*	94	90	94	94
MB	100	100	85*	100*	75
MG	98*	94	84	95*	79
NP	100	90	92*	86*	100
PP	89	91	82*	88	82
FPCLinMB**	100	-	-	-	-

\*New criterion standard applied

\*\*FPCLinMB = Focus Practice Designation-Clinical Microbiology

### Continuing Certification Program



Total Number of  
Diplomates Enrolled in  
Continuing Certification  
**12,210**

### Continuing Certification Program Statistics

	2020	2021	2022	2023	2024
Certificates Enrolled	961	1091	1120	1164	1006
Certificates Lapsed/ Revoked	97	64	46	47	57
Diplomates Enrolled	525	736	659	639	573
Diplomates Lapsed/ Revoked	70	52	34	34	38

#### Top Improvement in Health and Health Care (IHHC) Activities Reported by Diplomates in 2024

1. ABPath-Approved Slide Review Program
2. Department or Hospital/Institution Quality Assurance Committee
3. CLIA Mandated Cytology Proficiency Testing



# New Diplomates

## New Diplomates in 2024

Congratulations to the following diplomates who received their primary board certification in 2024.

Rasha Abdelgader, MD  
Mohammed Abdelwahed, MD  
Maryam Abdollahi, MD  
Sara Abu Mehzen, MD  
Robert Achram, MD  
Steven Adams, MD  
Jacob Afude, MD  
Maryam Ahmadi, MD  
Iqbal Ahmed, MD  
Yoo Min Ahn, DO  
Naoki Akanuma, MD  
Ardalan Akbari, MD  
Adeyinka Akinsanya, MD  
Yazan Al-Othman, MD  
Dhuha Al-Sajee, MD  
Anas Alabkaa, MD  
Azal Alani, MD  
Nazire Albayrak, MD  
Rasha Alfattal, MD  
Sarah Alghamdi, MD  
Haval Ali, MD  
Roshanak Alialy, MD  
Younes Aljohmani, MD  
Ahmad Alkashash, MD  
Andrew Allbee, MD  
Tiffany Alley, DO  
Mouaz Alsawas, MD  
Ahmad Alshomrani, MD  
Civan Altunkaynak, MD  
Eyas Alzayadneh, MD  
Shehla Aman, MD  
Alwalid Ammoun, MD  
Samuel Amofa-Ho, MD  
Haley Amoth, MD  
Aaron Amundson, DO  
Julia An, MD  
Stefen Andrianus, MD  
Obianuju Anelo, MD  
Anita Arackal, MD  
Ahmed Arfa, MD  
Soe Htet Arker, MD  
Juwairiya Arshi, MD

Nuvaira Ather, MD  
Michel Attieh, MD  
Moyosore Awobajo-Otesanya, MD  
Roshanak Azimi, MD  
Paula Babb, DO  
Sruthi Babu, MD  
Simon Backer, MD  
Laura Bagwell, MD  
Hisham Bahmad, MD  
Anfisa Baiandurova, MD  
Azad Bakht, MD  
Alexandra Balmaceda, MD  
Erin Barletta, MD  
Spencer Barnes, MD  
Paul Barone, MD  
Yigit Baykara, MD  
Erol Bayraktar, MD  
Shaza Ben Khadra, MD  
Phillip Bennett, DO  
Travis Berry, DO  
Brian Besch, MD  
Sepideh Besharati, MD  
Rabia Bhalli, MD  
Swati Bhardwaj, MD  
Monika Bhatt, MD  
Roshan Bhattarai, MD  
Mishi Bhushan, MD  
Lindsay Bigham, DO  
Maria Blaszczyk, MD  
Jocelyn Boccella, DO  
Nicholas Boire, MD  
Amanda Borgen, MD  
Nivaz Brar, MD  
Ankica Braun, MD  
John Broussard, MD  
Roman Brudnik, MD  
Bethany Burns, DO  
Abida Bushra, MD  
Alyssa Byrd, MD  
Corynne Caballero, MD  
Alexis Calderon, MD  
Steven Capen, MD

Beatriz Caraballo Bordon, MD  
Michael Castro, MD  
Carlos Castrodad-Rodriguez, MD  
Rachel Centofanti, DO  
Augusto Cezar Schmidt, MD  
Jiani Chai, MD  
Soma Chakraborty, MD  
Bindu Challa, MD  
Clarence Chan, MD  
Ling Chen, MD  
Tiane Chen, MD  
Katarina Cheng, MD  
Jorge Cheverez-Ocasio, Sr., MD  
Daniel Child, MD  
Allen Choi, MD  
Sanket Choksi, MD  
Bianca Christensen, MD  
Daniel Christensen, DO  
Michael Christensen, MD  
Nathanael Christensen, DO  
Nicholas Collins, DO  
Patricia Connor, MD  
Christopher Cormier, DO  
Zachary Coty-Fattal, MD  
Ashley Crosby, MD  
Brenndan Crumley, MD  
Julieta D'Ardis, MD  
Min Dai, MD  
Christopher Dampier, MD  
Michael Daniel, MD  
Karamatullah Danyal, MD  
Laetitia Daou, MD  
Maureen Dean, DO  
Melissa Delio, DO  
Mary Doan, MD  
Katya Dombrowski, MD  
Zachary Dong, MD  
Jacob Donnelly, DO  
Kristina Doytcheva, MD  
Favia Dubyk, MD  
Benjamin Dulken, MD  
Victoria Durkin, MD

Alex Dussaq, MD	Phoebe Hammer, MD	Jamie Kendrick, MD
Siarhei Dzedzik, MD	Bing Han, MD	Aysenur Keske, MD
Ukuemi Edema, MD	Jianmin Han, MD	Sarah Whitney Kesterson, MD
Mostafa Elhodaky, MD	Jing Han, MD	Neha Khaitan, MD
Annie Elizabeth Abraham, MD	Katie Hanson, MD	Zubaidah Khalaf, MD
Mohamed Elnagdy, MD	Michele Harvey, MD	Azeem Khan, MD
Hanan Elsarraj, MD	Elham Hatami, MD	Jaffar Khan, MD
Dalia Eltoum, MD	Jacob Havens, DO	Waleed Khan, MD
Hamidreza Faraji, MD	John Hedgepeth, MD	Anurag Khanna, MD
Khairya Fatouh, MD	Ashley Hein, MD	Mahyar Khazaeli, MD
Roger Fecher, MD	Kimberly Hein, MD	Prerna Khetan, MD
Christopher Felicelli, MD	Thomas Herb, MD	Pooja Khonde, MD
Yan Feng, MD	Ivana Hernandez, DO	Zaid Khreefa, MD
Juanita Ferreira, MD	Patricia Hernandez, MD	FNU Kiran, MD
Cristina Figueroa Villalba, MD	Amanda Herrmann, MD	Timothy Kirtek, MD
Eleonora Fiorletta Quiroga, MD	Christian Hirt, MD	Yukiko Kitagawa, MD
Olivia Fisher, MD	Brittany Holden, DO	Michael Kozak, DO
Jesse Fitzgerald, DO	Dean Holliday, Jr., MD	Liana Kozanno, MD
Sarah Fitzlaff, MD	Robert Hoyt, MD	Rita Krasniqi, DO
Precious Ann Fortes, MD	Wen-Yu Hsiao, MD	Niklas Krumm, MD
Alicia Franken, MD	Arkar Htoo, MD	Andrew Kumar, MD
Michael Franklin, DO	Hehua Huang, MD	Manish Kumar, MD
Robert Frick, MD	Ingold Huang, MD	Roopa Kumari, MD
Trent Fry, DO	Xuefei Huang, MD	Landon Kunzelman, MD
May Fu, DO	Jessica Hudson, MD	Brett Kurpiel, MD
Jun Fujita, MD	Ryan Hunter, MD	Melanie Kwan, MD
Yuriko Fujita, MD	Lap Huynh, MD	Jung Woo Kwon, MD
Sowmya Gaddam, MD	Sophia Hwang, MD	Julien Laor, MD
Swetha Gaddam, MD	Kelly Hynes, DO	Mamoor Latef, MD
Julia Gallardo, MD	Elsayed Ibrahim, MD	Ahmed Lazim, MD
Leah Geiser Roberts, DO	Komal Ijaz, MD	Jennifer Lee, MD
Rose George, MD	Aneeza Irfan, MD	Megan Lee, MD
Benjamin Gertsen, MD	Narek Israelyan, MD	Tiffany Lee, DO
Mariam Ghafoor, MD	Pragya Virendrakumar Jain, MD	Crystal Lenz, DO
Mehrnoosh Ghandili, MD	Sahar Jalali Farahani, MD	Portia Letham, DO
Joseph Gillam, MD	Rod Jamshidian, MD	Kaitlyn Levett, MD
Kevin Ginnebaugh, MD	Sylvia Jang, MD	Alice Li, MD
Alexander Gitlin, MD	Couger Jimenez Jaramillo, MD	Liping Li, MD
Raeshun Glover, MD	Xueting Jin, MD	Xiaomo Li, MD
Guilherme Gomide Almeida, MD	Soma Jobbagy, MD	Brooke Liang, MD
Miguel Gonzalez Mancera, MD	Heather Jones, MD	Diane Libert, MD
Austin Good, MD	Clarissa Jordan, MD	Edwin Lin, MD
Andrew Gould, DO	Richard Jordan, MD	Bella Liu, MD
Allen Green, MD	Husam Jum'ah, MD	Xiaoqin Liu, MD
Kesley Green, MD	Yazan Juma, MD	Xulei Liu, MD
Fabian Grubert, MD	Maria Kamal, MD	Kristen Logan, MD
David Gustafson, MD	Avi Kandel, MD	Linda Logan, DO
Larry Ha, MD	Selda Karaaslan, MD	Morgan Long, DO
Sandra Haddad, MD	Sarvenaz Karamooz, MD	Peter Louis, MD
David Haddock, MD	Kirill Karlin, MD	Marshall Lukacs, MD
Amelia Haj, MD	Riham Katkhuda, MD	Matthew Luo, MD
Sounick Halidar, MD	Sri Bharathi Kavuri, MD	Ethan Mack, MD
Erin Hall, MD	Colin Kelly, MD	Jenaye Mack, MD

Kiran Madwani, MD  
Iryna Mahan, MD  
Ngome Makia, MD  
Divya Mamilla, MD  
Peter Manchen, DO  
Peter Mannion, MD  
Mohamed Masoud, MD  
Rosemary Mattaino, DO  
Shannon May, MD  
John McAfee, MD  
Nathan McCammon, MD  
Kasey McCollum, MD  
Elizabeth Mcleod, MD  
Isabela Medeiros Heringer Pereira, MD  
Felix Medrano Garcia, MD  
Arek Melkonian, MD  
Ian Mellis, MD  
Adil Menon, MD  
Michael Mertz, DO  
William Mi, MD  
Donald Mignogna, III, MD  
Kevin Mijares, MD  
Michael Mikula, MD  
Nicolas Millan, MD  
Iain Miller, MD  
Jordan Miller, DO  
Kaysie Miller, DO  
Yesica Miltos, MD  
Jeremy Minkowitz, DO  
Amar Mirza, MD  
Monica Miyakawa-Liu, MD  
Joshua Mo, MD  
Khaled Mohamed, MD  
Nada Mohamed, MD  
Rehab Mohamed, MD  
Nebil Mohammed, MD  
Sanobar Yasmeen Mohammed, MD  
Pramila Moideen, MD  
Ali Mokhtari, MD  
Mariel Molina Nunez, MD  
Attila Molnar, MD  
Cara Monroe, MD  
Ali Moosvi, MD  
Bryan Morales-Vargas, MD  
Patrick Morse, MD  
Alberto Moscona, DO  
Ateeqa Mujeeb Ullah, MD  
Jessica Muldoon, MD  
Surya Nagaraja, MD  
Nada Naiyer, MD  
Tara Narasimhalu, MD  
Andrew Nelson, MD  
Lindsay Nelson, DO

Samikshya Neupane, MD  
Azfar Neyaz, MD  
Brian Nguyen, MD  
Teresa Nguyen, MD  
Thi Nguyen, MD  
Veronica Nicholas, DO  
Jeffrey Nirschl, MD  
Palgun Nisarga, MD  
Dingani Nkosi, MD  
Alisa Nobee, MD  
Eric Nomura, MD  
Abigayle Norwood, MD  
May-Phyo Nyi Nyi, MD  
Wendi O'Connor, MD  
Riley O'Hara, MD  
Igor Odintsov, MD  
Oluwole Odujoko, MD  
Jaymie Oentoro, MD  
Hovsep Ohan, MD  
Nivin Omar, MD  
Allen Omo-Ogboi, MD  
Joshua Onuiri, MD  
Madeleine Opsahl, DO  
Diana Oramas Mogrovejo, MD  
Jeffrey Ordner, III, DO  
Ibrahim Ortanca, MD  
Adam Osman, MD  
Monica Ospina Romero, MD  
Abdurrahman Ozay, MD  
Yusuf Ozelik, MD  
Oluwatobi Ozoya, MD  
Nagehan Pakasticali, MD  
Mohammadreza Pakyari, MD  
Vandana Panwar, MD  
Margaret Parham, MD  
Xenia Parisi, MD  
Amit Patel, MD  
Simmi Patel, MD  
Ameya Patil, MD  
Ashley Patton, DO  
Pranav Patwardhan, MD  
Isairis Peralta, MD  
Alexander Perez, MD  
Philip Petersen, MD  
Joshua Peterson, MD  
Andy Phan, MD  
Maria Pimenova, MD  
Emile Pinarbasi, MD  
Elizabeth Pogue, MD  
Erik Polsdofer, MD  
Caitlin Porter-Smith, DO  
Jessica Posada, MD  
Corey Post, MD

Scott Potter, MD  
Ramya Prabhu, MD  
Varsha Prakash, MD  
Ion Prisneac, MD  
Nicholas Protopsaltis, MD  
Ilham Putra, MD  
Andrii Puzyrenko, MD  
Adnan Qamar, MD  
Wenjing Qiu, MD  
Priscilla Quach, DO  
Arshna Qureshi, MD  
Nabil Rahoui, MD  
FNU Raja, MD  
Soha Ramadan, MD  
Raghunath Ramanarasimhaiah, MD  
Rayan Rammal, MD  
Shima Rastegar, MD  
Visesh Ravikumar, MD  
Caitlin Raymond, MD  
Aayushma Regmi, MD  
Kapitolina Reid, MD  
Pranav Renavikar, MD  
Michael Reno, MD  
Julia Rewerska, MD  
Joseph Reznicek, MD  
Irene Riahi, MD  
Luisa Ricaurte Archila, MD  
Kathryn Rice, MD  
Anu Rijal, MD  
Raheel Rizwan, MD  
Lorraina Robinson, DO  
Maria Del Carmen Rodriguez Pena, MD  
Kara Roncin, MD  
Arash Roohani, MD  
Harry Rosenberg, MD  
Cooper Rutland, MD  
Jennifer Rytych, MD  
Ahmed Sabri, MD  
Maryam Sadough Shahmirzadi, MD  
Kasturi Saikia, MD  
Navid Salahi, MD  
Maelle Saliba, MD  
Archana Sallagonda, MD  
Rasleen Saluja, MD  
John Sanchez, MD  
Sandra Sanchez, MD  
Jeffrey Sanford, MD  
Celeste Santos Martins, MD  
Ruhani Sardana, MD  
Shivani Satia, MD  
Ryan Sauls, DO  
Badal Savariya, MD  
Vishnu Serla, MD

Sunder Sham, MD  
 Kathleen Sheahon, MD  
 Tiffany Sheganoski, DO  
 Katie Shewbart, DO  
 Elina Shkolnik, DO  
 Juan Silva Campos, MD  
 Jason Sina, MD  
 Dennis Sinclair, MD  
 Sindhuja Sivanandham, MD  
 Benjamin Smith, MD  
 Colton Smith, DO  
 Keenen Smith, MD  
 Megan Smith, MD  
 Andrew Sohn, MD  
 Nicholas Spies, MD  
 Mahavrat Srivastava-Malick, MD  
 Samantha Stephen, DO  
 Nadarra Stokes, MD  
 Kohl Strauss, MD  
 Duncan Sudarshan, MD  
 Luz Sullivan, MD  
 Jing Sun, DO  
 Ying Sun, MD  
 Yu Sun, MD  
 Wai Szeto, MD  
 Sami Talibi, MD  
 Haiming Tang, MD  
 Vivian Tang, MD  
 Giannoula Tansarli, MD  
 Nika Tavberidze, MD  
 Daniel Taylor, MD  
 Elizabeth Taylor, MD  
 Jonee Taylor, MD  
 Raquel Teixeira Yokoda, MD  
 Jonathan Tepp, MD  
 Janie Theriot, MD  
 Jeffrey Thomas, Jr., DO  
 Victoria Thomas, MD

Robert Toelke, MD  
 Ani Toklu, MD  
 Nicole Tomm, MD  
 Isabella Tondi Resta, MD  
 Gisele Toumi, MD  
 Matthew Tsang, MD  
 Calvin Tseng, MD  
 Jonathan J. Tucci, MD  
 Anthony Tuzzolo, MD  
 Aijan Ukudeeva, MD  
 Elisabeth Urpi, MD  
 Brian Vadasz, MD  
 Matthew Vega, MD  
 Ilianne Vega Prado, MD  
 Lakshmisree Vemulakonda, MD  
 Anusha Vemuri, MD  
 Josef Venable, Jr., MD  
 Breanne Vergonet, MD  
 Anuj Verma, MD  
 Lynette Viruet-Guzman, MD  
 Mariana Voudouri, MD  
 Evan Waldron, MD  
 Ritika Walia, MD  
 Lisa Wallace, DO  
 Bangchen Wang, MD  
 Hua Wang, MD  
 Jing Wang, MD  
 Julia Wang, MD  
 Liangli Wang, MD  
 Maxwell Wang, MD  
 Wei Wang, MD  
 Xi Wang, MD  
 Laura Warren, MD  
 Katherine Weng, MD  
 Sarah Wilken, MD  
 Jonathan Willner, MD  
 Joshua Wodskow, DO  
 Brandon Wolff, MD

Bitania Wondimu, MD  
 Lisa Wong, MD  
 Robert Wood, Jr., MD  
 Erica Worswick, MD  
 Chelsea Wright-Void, MD  
 Jiejun Wu, MD  
 Meifang Wu, MD  
 Jessie Xiong, MD  
 Hafiz Yahya, MD  
 Natalia Yanchenko, MD  
 Bei Yang, MD  
 Ellen Yang, MD  
 Limin Yang, MD  
 Xiaoyan Yang, MD  
 Irfan Yasin, MD  
 Leonard Yenwongfai, MD  
 Priscilla Yeung, MD  
 Furkan Yigitbilek, MD  
 Bahadir Yildiz, MD  
 Fazilet Yilmaz, MD  
 Mine Yilmaz, MD  
 Ahmed Younes, MD  
 Valentina Zanfagnin, MD  
 Roya Zarpak, MD  
 Hatice Zengin, MD  
 Chelsea Zhang, MD  
 Jenny Zhang, MD  
 Ruth Zhang, MD  
 William Zhang, MD  
 Yong Zhang, MD  
 Zhenwei Zhang, MD  
 Melissa Zhao, MD  
 Mitchell Zhao, MD  
 Jasper Zheng, MD  
 Stephanie Zheng, MD  
 Xiang Zhu, MD  
 Jennifer Ziebell, MD  
 Connor Zuraski, MD



**Certified by the  
 American Board of Pathology**

*Promoting Excellence in the  
 Practice of Pathology*

# 2024 Financials

## Revenue

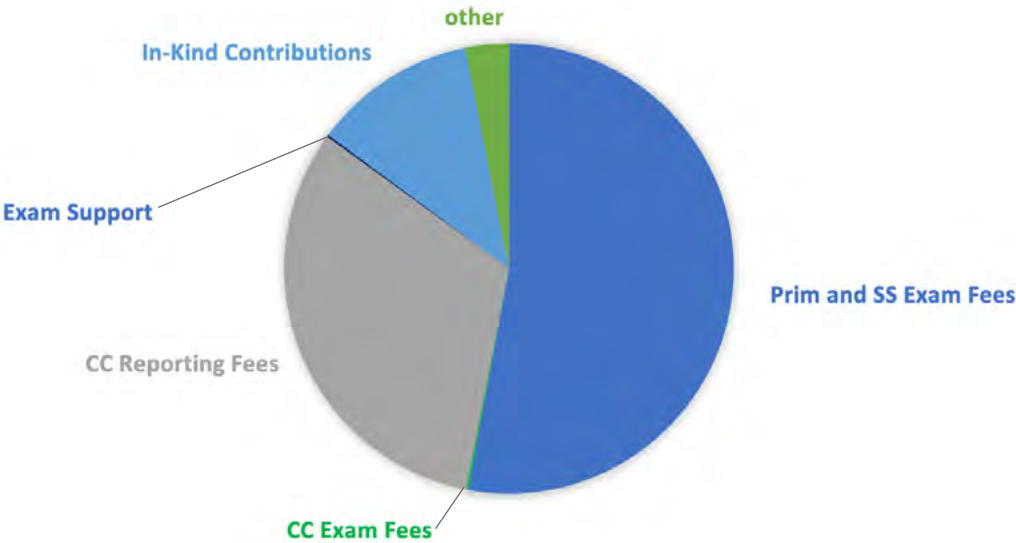
ABPath revenue is generated from multiple sources. Candidates pay examination fees for the Primary, Subspecialty, and Continuing Certification reinstatement exams and diplomates pay a fee for administration of the Continuing

Certification Program. The ABPath supports two other boards with their exams each year; the revenue is captured under Exam Support. Examination questions are written by volunteer pathologists. Per the IRS, their services

must be reported as an In-Kind Contribution (equivalent time a pathologist would be paid had they charged for these services).

Revenue		
Primary/SS Examination Fees, Net of Refunds	52.89%	\$ 2,878,911
CC Examination Fees, Net of Refunds	0.17%	\$ 9,000
CC Reporting	31.92%	\$ 1,737,505
Exam Support	0.15%	\$ 8,318
In-Kind Contributions	11.74%	\$ 639,236
Other	3.13%	\$ 170,251
<b>Total Revenue w/o Restrictions</b>	<b>100%</b>	<b>\$ 5,443,221</b>

Source: 2024 Yearend Audit







## Expenses

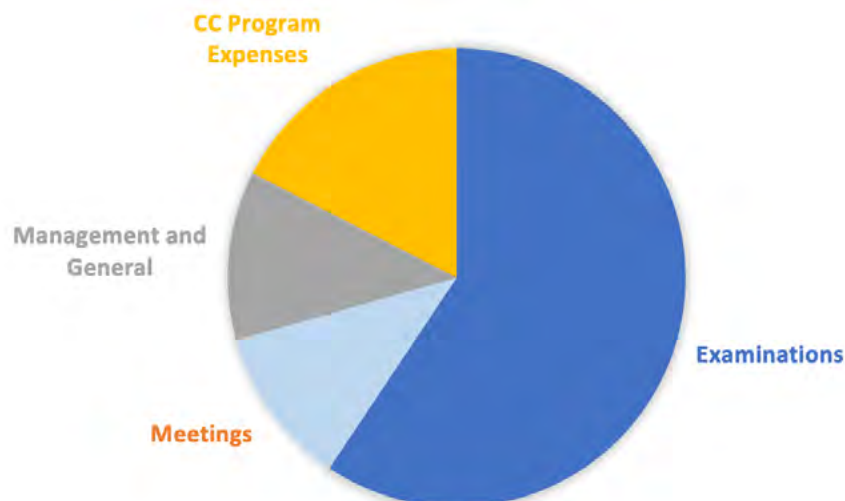
Examination expenses cover the cost of credentialing candidates; the development, administration via Pearson VUE test centers, and scoring of the exams, and reporting results. Meeting expenses include the travel and administrative expenses for volunteer test committee

members and Trustees. Management and general expenses include employee salaries, benefits, insurance, information technology support and licensing, facility and equipment rental and maintenance, ABMS member fees, and the cost of providing services to our dip-

lomates, such as ACCME PARS. CC Program Services includes all of the above types of expenses that are directly affiliated with the CC Program including ABPath CertLink®.

Expenses		
<b>Program Services</b>		
Examinations	59.39%	\$ 3,678,344
Meetings	11.22%	\$ 694,873
CC Program Services	11.92%	\$ 738,034
Management & General*	17.48%	\$ 1,082,329
<b>Total Expenses</b>	<b>100%</b>	<b>\$ 6,193,580</b>

\* Also includes management/oversight and overhead costs of the CC Program.



# Publications

## Clones and Reassessment in ABPath CertLink

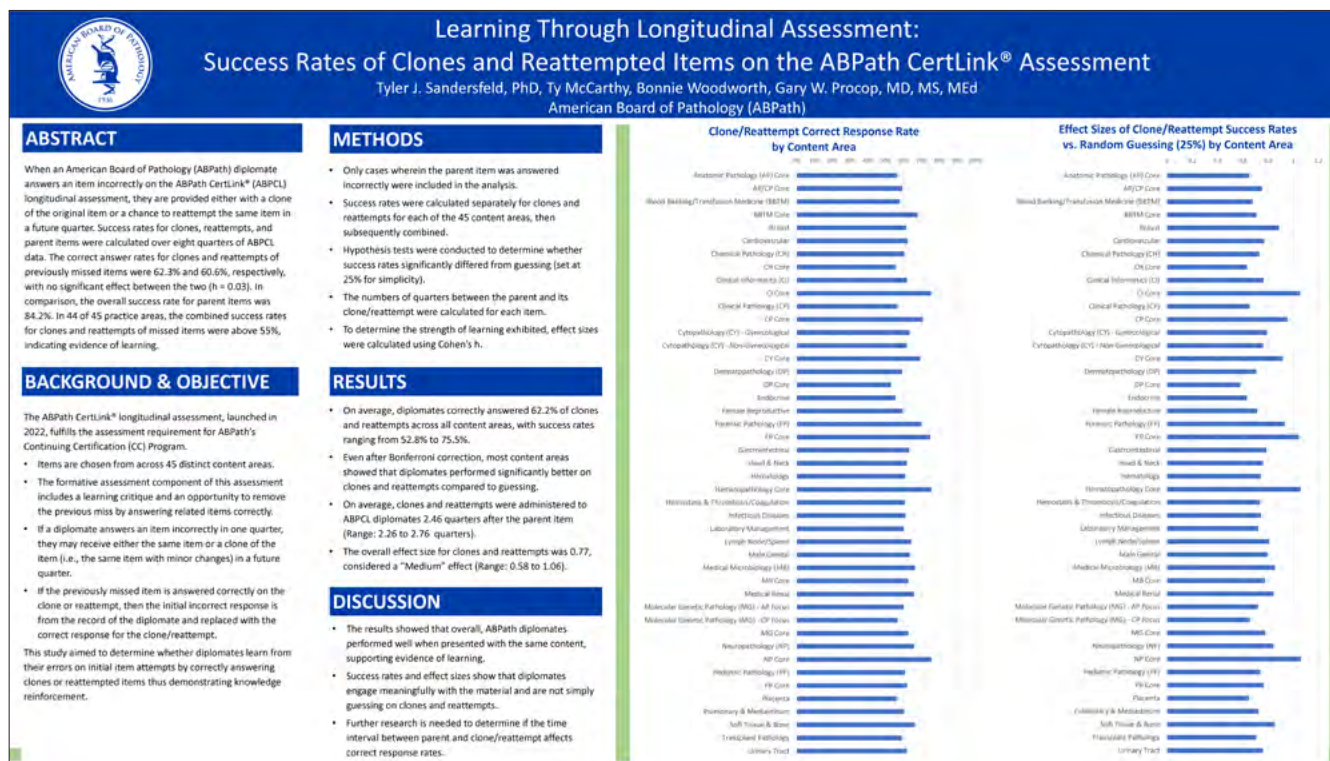
Tyler J. Sandersfeld, PhD, Ty McCarthy, Bonnie Woodworth, Gary W. Procop, MD, MS, MEd. *Learning Through Longitudinal Assessment: Success Rates of Clones and Reattempted Items on the ABPath CertLink Assessment* poster presented at the ABMS 2024 Annual Meeting in Chicago, Illinois.

## When to Take the Primary Examination

Procop, G. W., Sandersfeld, T. J., Levesque, M., McCarthy, T., Woodworth, B., & Swerdlow, S. H. (2024). When to take the primary certification examination: sooner or later? *Academic Pathology*, 11(2), 100116. <https://doi.org/10.1016/j.acpath.2024.100116>

## Pass Rates for Blood Bank and Transfusion Medicine

Gary W. Procop, Tyler Sandersfeld, Mark K. Fung, Low board pass rates in Blood Banking/Transfusion Medicine, *American Journal of Clinical Pathology*, Volume 162, Issue 2, August 2024, pages 213–214. <https://doi.org/10.1093/ajcp/aqae028>





Contents lists available at ScienceDirect  
Academic Pathology 11/2 (2024) 100116

# Academic Pathology

journal homepage: [www.journals.elsevier.com/academic-pathology](http://www.journals.elsevier.com/academic-pathology)



## Regular Article

### When to take the primary certification examination: sooner or later?



Gary W. Procop, MD, MS, MEd<sup>\*</sup>, Tyler J. Sandersfeld, PhD, Mario Levesque, MSEE, Ty McCarthy, MSS, Bonnie Woodworth, BA, Steven H. Swerdlow, MD

American Board of Pathology, Tampa, FL, USA

## ABSTRACT

Most Pathology residents take the Anatomic Pathology and/or Clinical Pathology primary pathology certification examination(s) near the end of their final year of training (i.e., Spring), whereas some postpone the examination(s) to the Fall administration of that year or even later. We compared the Spring and Fall administration pass rates of initial primary certification candidates for those who graduated in the same year they took the examination. We also compared the pass rates of same-year graduates with individuals who postponed the examination for a year or more. We also surveyed the candidates regarding the reasons they chose the Spring or Fall administration. Candidates who chose the earlier (i.e., Spring) administration were more likely to pass compared with those who took the later Fall administration ( $p = 0.0026$  for Anatomic Pathology;  $p = 0.0004$  for Clinical Pathology). Delaying the certifying exams beyond the calendar year of residency graduation was associated with a higher failure rate ( $p < 0.0001$  for both Anatomic and Clinical Pathology). The survey results suggest that residents often take their certification examinations earlier to not interfere with fellowship training, because it coincides with the completion of residency training, or it is expected by their program. Pathology residents are more likely to pass the primary certification examinations when they are taken closer to the end of training, rather than postponing it to a later administration. Pathology residency program directors should encourage residents, who are deemed ready, to take their certification examinations at the earliest possible administration.

Keywords: Board, Certification, Examination, Timing

## Introduction

Residents who complete Pathology training in an Accredited Council on Graduate Medical Education (ACGME) accredited program and have completed the requirements for primary certification by the American Board of Pathology most often attempt the Pathology (AP) certification examination and the Clinical Pathology (CP) certification examination for a combined anatomic and clinical (AP/CP) primary certification. There are also primary certification examinations for AP only and CP only. There are two examination administrations per year for primary certification. The earliest administration is in the fall of the year that corresponds with the final months of residency training, whereas the second administration is in the fall of that year's completion of residency training. Historically, most candidates take the primary certification at the first (i.e., Spring) administration of the year in which they graduate.

Although the primary certification examinations given in the fall administration is psychometrically equivalent to the exam given in the fall of the same year, a tendency for a higher pass rate for the candidates has been noted. We, therefore, undertook a comparison of pass rates of recent graduates who took the AP and/or CP examination(s) for the first time in the Spring compared with those who took the Fall administration of the same year. We also assessed

<sup>\*</sup> Corresponding author. The American Board of Pathology, One University Avenue, Tampa, FL 33606, USA.  
E-mail address: [gprocop@abpath.org](mailto:gprocop@abpath.org) (G.W. Procop).

<https://doi.org/10.1016/j.acpath.2024.100116>

Received 22 December 2023; Received in revised form 4 February 2024  
eISSN 2374-2895/© 2024 The Authors. Published by Elsevier Inc. on behalf of the American Society for Clinical Pathology.  
<http://creativecommons.org/licenses/by/4.0/>

## Low board pass rates in Blood Banking/Transfusion Medicine

Am J Clin Pathol August 2024;162:213-214 <https://doi.org/10.1093/ajcp/ajae028>

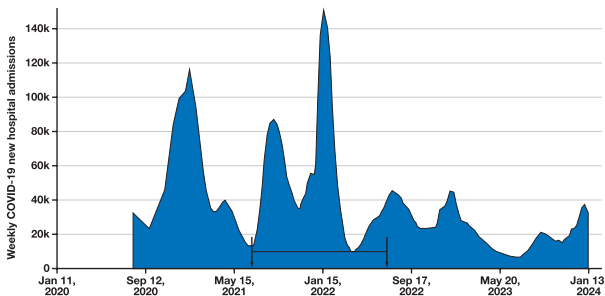
## TO THE EDITOR

We read with interest the article by Adkins and colleagues, entitled "The devil's in the details: Exploring historically low board pass rates in Blood Banking/Transfusion Medicine."<sup>1</sup> Foremost, we would suggest that the title would have been more accurate if it had explored "a historically low board pass rate in Blood Banking/Transfusion Medicine," since only the 2022 score was outside the range of previously reported scores (Figure 1 of Adkins et al<sup>1</sup>). Regardless, we do agree that this historically low rate deserves investigation and further contemplation of possible causes.

The authors identify some likely contributors to the poor overall performance on this examination with which we agree. Foremost among these was the impact of the COVID-19 pandemic. Numerous reports have demonstrated that students at a variety of educational levels have been found to be significantly behind with respect to their expected educational level following the pandemic.<sup>2,3</sup> Additionally, it is widely known that there was a cessation of voluntary

surgical procedures in most institutions at the peak of the COVID-19 pandemic; this had a significant and negative impact on the number and types of procedures available to surgical trainees.<sup>4,5</sup> Therefore, there would also be a corresponding decrease in the need for transfusion support and the associated learning opportunities for Blood Banking/Transfusion Medicine (BB/TM) trainees in institutions wherein this occurred. Individuals who were in fellowship during the 2021-2022 academic year experienced two major COVID-19 waves, one of which resulted in the greatest number of hospitalizations of the pandemic (Figure 1). Furthermore, these individuals experienced a significantly disrupted final year of residency training due to the first wave of the pandemic.

Blood Banking/Transfusion Medicine is an extremely complicated field with a variety of new and highly technical expectations added over the past decade (eg, cell salvage, harvesting, processing, storage, and readministration of progenitor cells, among others). Advanced training in BB/TM is already compressed into a single year of training; this is the minimum time period deemed acceptable for a trainee to gain the knowledge, judgment, and skills necessary to perform competently in the workplace ([https://www.acgme.org/globalassets/PFAssets/ProgramRequirements/305\\_BloodBankingTransfusionMedicine\\_2020\\_TCC.pdf?ver=2020-06-18-161111-690&ver=2020-06-18-161111-690](https://www.acgme.org/globalassets/PFAssets/ProgramRequirements/305_BloodBankingTransfusionMedicine_2020_TCC.pdf?ver=2020-06-18-161111-690&ver=2020-06-18-161111-690)). Interruptions in this training, whether it be from the redistribution of the trainee workforce (eg, trainees collecting or processing specimens), personal illness, or working from home, are reasonable explanations, in part, for the inadequate preparation of some individuals in the training period most severely affected by the COVID-19 pandemic. It should also be noted that when working from home, many trainees also assumed



**FIGURE 1** COVID-19 new hospital admissions by week in the United States reported to the Centers for Disease Control and Prevention (CDC). This figure of COVID-19 hospital admissions reported to the CDC shows that 2 substantial peaks of the pandemic occurred during the 2021-2022 academic year (arrows connected by bar).

© The Author(s) 2024. Published by Oxford University Press on behalf of American Society for Clinical Pathology.  
All rights reserved. For commercial re-use, please contact [reprints@oup.com](mailto:reprints@oup.com) for reprints and translation rights for reprints. All other permissions can be obtained through our RightsLink service via the Permissions link on the article page on our site—for further information please contact [journals.permissions@oup.com](mailto:journals.permissions@oup.com).

Am J Clin Pathol 2024;162:213-214  
<https://doi.org/10.1093/ajcp/ajae028>

Downloaded from <https://academic.oup.com/ajcp/article/162/2/213/7638849> by guest on 11 June 2025

# Cooperating Societies



The ABPath collaborates with our 18 *Cooperating Societies* to identify and address issues of importance to the profession of pathology. Through these valuable relationships, our Cooperating Societies support diplomates in their life-long learning and improvement in practice, their participation in Continuing Certification, and document their participation in educational and quality assessment activities.

The Societies' participation in our annual ABPath Summit of Cooperating Societies has been especially beneficial as training requirements for board certification evolve. In 2024, our Trustees met with the Societies in Chicago to discuss the potential development of In-training Assessment modules to better assess content areas that are not well represented on the certification exams, assess the ability to do the work/competency that cannot be properly assessed with a multiple-choice exam, and reduce the length of the certification exams.



**STRONGERTOGETHER**



**COLLEGE of AMERICAN PATHOLOGISTS**



**Association of Directors of Anatomic and Surgical Pathology**



**Society for Hematopathology**

## The Cooperating Societies of the ABPath in 2024

Academy of Clinical Laboratory Physicians and Scientists

American Association of Neuropathologists

American Medical Association Pathology Section Council



American Society for Clinical Pathology

American Society of Cytopathology

American Society of Dermatopathology

American Society for Investigative Pathology



Association for Academic Pathology  
(formerly the Association of Pathology Chairs)

Association for the Advancement of Blood and Biotherapies

Association of Directors of Anatomic and Subspecialty Pathology

Association for Molecular Pathology

Association for Pathology Informatics

College of American Pathologists

National Association of Medical Examiners

Society for Cardiovascular Pathology

Society for Hematopathology

Society for Pediatric Pathology

United States and Canadian Academy of Pathology



**ASIP**  
American Society for Investigative Pathology

**AMA**

**USCAP**  
Creating a Better Pathologist

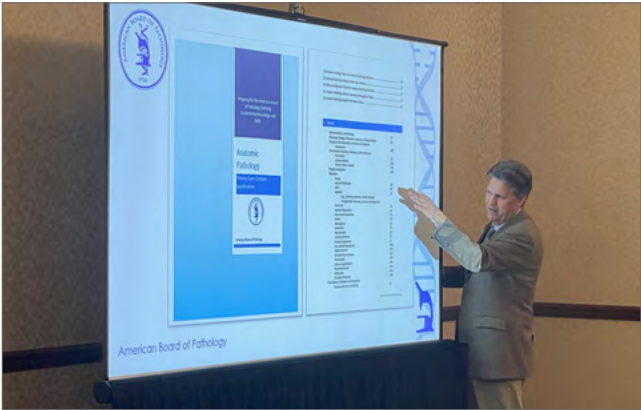




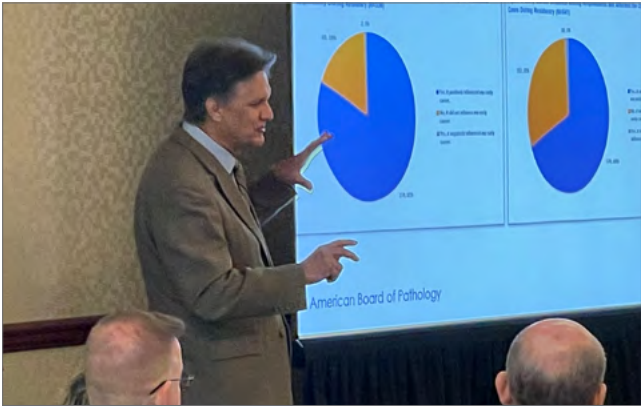
USCAP Booth



ASCP Booth



ABPath Cooperating Society Meeting



ABPath Cooperating Society Meeting



ABPath Cooperating Society Meeting



ABPath Cooperating Society Meeting





# Governance

## 2024 ABPath Board of Trustees

The ABPath is governed by 12 physician members and one public member. Each member is highly esteemed and accomplished in their respective fields

and subspecialties. ABPath Trustees are responsible for setting the strategic goals, governing and upholding the integrity of the Board's mission to serve

the public and advance the profession of pathology by setting certification standards and promoting lifelong competency of pathologists.

## Executive Board\_2024



**BARBARA SAMPSON, MD, PhD**  
New York, New York  
PRESIDENT



**MOHIEDEAN GHOFRANI, MD, MBA**  
Vancouver, Washington  
VICE PRESIDENT



**KATHLEEN G. BEAVIS, MD**  
Chicago, Illinois  
SECRETARY



**MARK K. FUNG, MD, PHD**  
Burlington, Vermont  
TREASURER



**RITU NAYAR, MD**  
Chicago, Illinois  
IMMEDIATE PAST PRESIDENT





**EDWARD R. ASHWOOD, MD**  
Aurora, Colorado



**JAMES R. COOK, MD, PhD**  
Cleveland, Ohio



**ERIC F. GLASSY, MD**  
Rancho Dominguez, California



**JEFFREY D. GOLDSTEIN, MD**  
Los Angeles, California



**JULIE D. KINGERY, MD**  
Gainesville, Florida



**JENNIFER LAUDADIO, MD**  
Little Rock, Arkansas



**JAVARRO RUSSELL, PhD**  
Richmond, Virginia



**MATTHEW J. WASCO, MD**  
Ann Arbor, Michigan



**GARY W. PROCOP, MD, MS, MEd**  
ABPath Chief Executive Officer

The Trustees' biographical information can be found at <https://abpath.org/board-of-trustees/>

# Volunteers

The ABPath appreciates the many contributions of our [TDAC](#) members who volunteer their time as subject matter experts to provide direction and content for certification examinations.

Each of the committees is chaired by an ABPath Trustee. We thank them for contributing their time and talents.

The 2024 members were as follows:



## Anatomic Pathology

Mohiedean Ghofrani, MD—Chair  
Kimberly Allison, MD  
Jennifer Boland-Froemming, MD  
Alain Borczuk, MD  
Deborah L. Cook, MD  
Jessica Davis, MD  
Robert P. Hasserjian, MD  
Joseph Rabban, MD  
Duane Schafer, DDS  
Rhonda Yantiss, MD

## Anatomic Pathology ABPath CertLink

Ritu Nayar, MD—Chair  
Eric Glassy, MD—Vice Chair  
Ahmed Alomari, MD  
Luis Blanco, MD  
Bonnie Choy, MD  
Greg G. Davis, MD  
Sarah Gibson, MD  
Jennifer Hammers, DO  
Evita Henderson-Jackson, MD  
John Higgins, MD  
Abberly Lott Limbach, MD  
Balaram Puligandla, MD  
Margaret Ryan, MD

## Blood Banking/Transfusion Medicine

Mark K. Fung, MD—Chair  
Sally Campbell-Lee, MD  
Meghan Delaney, MD  
Nancy M. Dunbar, MD  
Marisa B. Marques, MD  
Alyssa Ziman, MD

## Chemical Pathology

Edward R. Ashwood, MD—Chair  
Rebecca Harris, MD  
Andrew Hoofnagle, MD  
Gary L. Horowitz, MD  
Sean Li, MD  
Caitlin Schein, MD

## Clinical Pathology ABPath CertLink

Mark K. Fung, MD—Chair  
Jennifer Laudadio, MD—Vice Chair  
Melkon Dombourian, MD  
Sean Li, MD  
Mark Lovell, MD  
Robin Patel, MD  
Kalpana Reddy, MD  
Karl S. Theil, MD

## Cytopathology

Ritu Nayar, MD—Chair  
Scott Anderson, MD  
Deborah Chute, MD  
Evita Henderson-Jackson, MD  
Zahra Maleki, MD  
Swati Mehrotra, MD  
Vanda Torous, MD  
Roseann Wu, MD

## Dermatopathology

(Includes ABPath and ABD appointees)  
Matthew J. Wasco, MD—Chair  
Tammie Ferringer, MD—Vice Chair  
May Chan, MD  
Ryan Hick, MD  
Karl Napekoski, MD  
Melissa Piliang, MD  
Sara Shalin, MD  
Michael Tetzlaff, MD  
Travis Vandergriff, MD  
Claudia Vidal, MD

## Forensic Pathology

Barbara Sampson, MD—Chair  
Elizabeth Bundock, MD  
Maura DeJoseph, MD  
Susan Ely, MD  
Odette Hall, MD  
John Lacy, MD  
Jonathan R. Lucas, MD

## Hematopathology

James R. Cook, MD—Chair  
Dan Arber, MD  
Kyle T. Bradley, MD  
Dong Chen, MD  
Casey Gooden, MD  
Russell Higgins, MD  
Kristin Hunt Karner, MD

## Management and Informatics

Kathleen G. Beavis, MD—Chair  
Julie D. Kingery, MD—Vice Chair  
Sterling Bennett, MD  
Peter Perrota, MD  
Christopher Lee Williams, MD

## Medical Microbiology

Kathleen G. Beavis, MD—Chair  
Bradley Ford, MD  
Cindy McCloskey, MD  
Robin Patel, MD  
Chris Polage, MD  
Daniel Rhoads, MD  
Kamaljit S. Singh, MD

## Molecular Genetic Pathology

(Includes ABPath and ABMGG appointees)  
Jennifer Laudadio, MD—Chair  
Miriam G. Blitzer, PhD  
Jessica Booker, PhD  
Allison Cushman-Vokoun, MD  
Mark Ewalt, MD  
Jane Gibson, MD  
Randall Olsen, MD  
Keyur Patel, MD  
Catherine Rehder, MD  
Lynette Sholl, MD  
Sophia Yohe, MD

**Neuropathology**

Eric F. Glassy, MD—Chair  
 Anne Buckley, MD  
 Sandra Camelo-Piragua, MD  
 Edward Lee, MD  
 Arie Perry, MD  
 Maria Martinez-Lage, MD  
 Fausto Rodriguez, MD  
 Matthew Schniederjan, MD

**Pediatric Pathology**

Jeffrey D. Goldstein, MD—Chair  
 Bonnie Cole, MD  
 Jason Jarzembowski, MD  
 Philip J. Katzman, MD  
 Alexandra Kovach, MD  
 Heather Rytting, MD  
 Sara Vargas, MD



## TDAC and Advisory Committees

**2024 CC Advisory Committee**

The Continuing Certification (CC) Advisory Committee is made up of volunteer diplomates representing various specialties and levels of experience and is chaired by an ABPath Trustee. It is responsible for advising the ABPath Board of Trustees for the continuous evaluation and improvement of Continuing Certification from a diplomate's perspective. Each member serves three years on the Committee.

Beginning in 2025, the Committee will be referred to as the **Diplomate Advisory Committee**, since the scope of the work goes beyond Continuing Certification and advisement from the committee is on many aspects of board certification for diplomates.

Julie D. Kingery, MD—Chair  
 La'Tonzia Adams, MD  
 Daisy Alapat, MD  
 Michelle Aurelius, MD  
 Nick Batalis, MD  
 Deniz Peker Barclift, MD  
 Ashton Byington, MD  
 Jared Coberly, MD  
 Jennifer Findeis-Hosey, MD  
 Raul Gonzalez, MD  
 Jennifer Kasten, MD  
 Thomas Lee, MD  
 Rose-Marie Rodriguez-Oringo, MD  
 Jaclyn Rudzinski, MD  
 Saloni Walia, MD

**CC Advisory  
Committee**  
 Continuing Certification

**2024 Resident and Fellow Advisory Committee**

The ABPath Resident and Fellow Advisory Committee is made up of Pathology Residents and Fellows with the purpose of providing feedback and suggestions for improvement to ABPath about board certification.

Gary Procop, MD—Chair, ABPath CEO  
 Fahire Akarca, MD—*University of California, San Francisco*  
 Leonardo Montesinos Barona, MD—*UMass Chan Medical School*  
 Thuy Cao, MD—*University of Kansas*

Soban Farooq, MD—*East Carolina University*  
 Maryam Foroughi, MD—*University of Florida*  
 Shane Kaysen, DO—*University of Utah*  
 Grant Kozeny, MD—*Wake Forest University*  
 Portia Letham, DO—*Baylor University*  
 Rachel Sawada, MD—*University of California, San Diego*  
 Cameron Summers-Powell, MD—*HCA Florida Westside*  
 Nathan A. Williams, MD—*University of Maryland Medical Center*

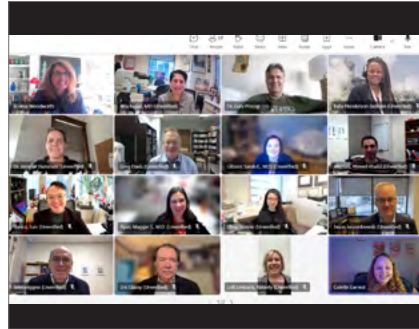
**Resident  
& Fellow  
Advisory  
Committee**



## TDAC Members



Anatomic Pathology



Anatomic Pathology ABPath  
CertLink



Blood Banking/  
Transfusion Medicine



Chemical Pathology



Clinical Pathology ABPath  
CertLink



Cytopathology



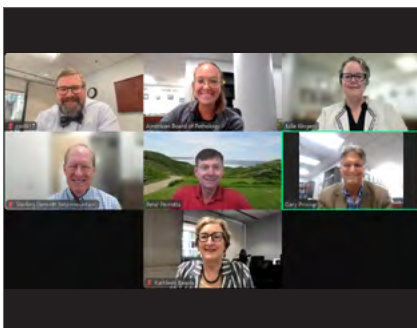
Dermatopathology



Forensic Pathology



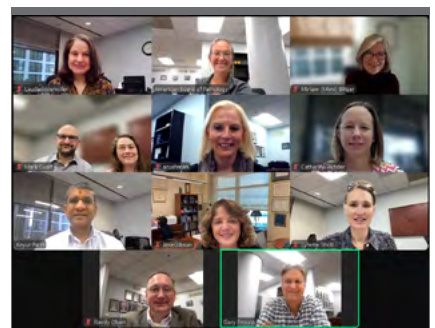
Hematopathology



Management and Informatics



Medical Microbiology



Molecular Genetic Pathology





Neuropathology



Pediatric Pathology

TDAC Certificate of Appreciation



Edward Lee, MD



Tammie Ferringer, MD



Kamaljit S. Singh, MD



Robert P. Hasserjian, MD



Gary L. Horowitz, MD



Jonathan R. Lucas, MD



Jason Jarzembowski, MD





## Meet Our Platinum Volunteer Item Writers!

ABPath CertLink is successful due in part to the Volunteer Item Writers who contribute questions to be used in the CertLink assessment. We are pleased to introduce our top ABPCL Volunteer Item Writers of 2024: Snehal Patel, MD, PhD, and Gulisa Turashvili, MD, PhD.

Each has contributed at least 36 items to reach the Platinum tier of the ABPath Volunteer Item Writer program! We thank them for their dedication to Continuing Certification and the specialty of pathology.



### Platinum Level Contributors



**Snehal Patel, MD, PhD**

Dr. Snehal Patel is a molecular pathologist, machine learning engineer, and cancer researcher. His interest in molecular and computational approaches to medicine began at Vanderbilt University, where he graduated with distinction in Mathematics and Biomedical Engineering in 2001. He then moved on to the Medical Scholars Program at the University of Illinois, where he acquired the knowledge and skills to investigate the molecular basis of cancer and graduated with an MD and PhD in Biochemistry in 2011. Dr. Patel went on to complete an Anatomic & Clinical Pathology residency in 2015 and Molecular Genetic Pathology fellowship in 2016 at Cedars-Sinai and postdoctoral research fellowship in Machine

Learning at Michigan State University in 2021. Dr. Patel gained extensive experience in cancer diagnostics across government, industry, and academia. He has a strong track record in developing and validating molecular assays, improving laboratory quality, and training pathology residents and fellows. Dr. Patel currently serves as the Director of the Molecular Pathology Laboratory at the University of Oklahoma, where he helps drive the growth of a comprehensive genomics program and conducts research focused on developing Artificial Intelligence to enhance the efficiency and accuracy of laboratory processes, ultimately improving health outcomes for cancer patients.



**Gulisa Turashvili, MD, PhD**

Gulisa Turashvili, MD, PhD, is an Associate Professor of Pathology at Harvard Medical School, and Associate Pathologist at Massachusetts General Hospital, Boston, MA. She is also the Vice-Chair of the College of American Pathologists Cancer Committee. Dr. Turashvili received her medical degree from Tbilisi State Medical University in Georgia. Her pathology training included Anatomic Pathology Residency at Queen's University, ON, Canada, and Gynecologic and Breast Pathology Fellowships at Memorial Sloan Kettering Cancer Center, New York, NY. She is the Deputy Ed-

itor-In-Chief of Gynecologic Pathology at PathologyOutlines and a member of the Pathology Work Group of the International Gynecologic Cancer Society, Anatomic Pathology CheckPath Committee of the American Society for Clinical Pathology, and other international and national committees. Dr. Turashvili serves on the Editorial Board of *Modern Pathology*, *Laboratory Investigation*, *American Journal of Clinical Pathology*, *BMC Cancer*, and other peer-reviewed journals. She has co-authored several book chapters and over 125 peer-reviewed publications.

# Pathology Outlines Appreciation

ABPath would like to thank Pathology Outlines for supplying images to be used in ABPath CertLink (ABPCL). Pathology Outlines provides useful professional information to practicing

Pathologists and laboratory personnel free of charge. We appreciate their support in lifelong learning for pathologists through ABPCL, ABPath's online longitudinal assessment platform.

# 2024 ABPath Staff

Our staff is proud to support the ABPath mission and strategic goals. They truly enjoy supporting our candidates and diplomates to achieve and maintain their board certification.

Alissa Eagle—Slide Librarian  
Amanda Zombro—Coordinator of Information Services  
Anthony Schlinsog—Chief Information Officer  
Bonnie Woodworth—Communications Director

Colette Earnest—ABPath CertLink Support Specialist  
Gabriela Lago—Intermediate Full Stack Developer / IT Generalist  
Gary W. Procop, MD, MS, MEd—Chief Executive Officer  
Geri Wills—Accountant  
John Lemke—Continuing Certification Coordinator  
Josie Santos—Chief Financial Officer  
Kasey Williamson—ABPath CertLink Coordinator  
Lily Veith—TDAC Coordinator

Mario Levesque—Senior Systems Developer  
Mary Pyfrom—Primary Certification Coordinator  
Nick Parrucci—Intermediate Full Stack Developer / IT Generalist  
Reneé Holder—Subspecialty Certification Coordinator  
Ty McCarthy—Chief Operating Officer  
Tyler Sandersfeld—Psychometrician



Pictured from left to right:  
Front row: **Mary Pyfrom, Geri Wills, Renee Holder, Anthony Schlinsog, Ty McCarthy, Dr. Gary W. Procop, Josie Santos, Kasey Williamson, Gabriela Lago.**  
Back row: **Colette Earnest, John Lemke, Tyler Sandersfeld, Nick Parrucci, Lily Veith, Alissa Eagle, Amanda Zombro, Bonnie Woodworth**  
Not pictured: **Mario Levesque**



## AMERICAN BOARD OF PATHOLOGY

**4830 W. KENNEDY BLVD. SUITE 690  
TAMPA, FL 33609,  
(813) 286-2444  
FAX: 813-289-5279,  
WWW.ABPATH.ORG**

**Gary W. Procop, MD, MS, MEd**  
Chief Executive Officer

**Ty McCarthy**  
Chief Operating Officer  
[coo@abpath.org](mailto:coo@abpath.org)

**Primary Certification**  
[mary@abpath.org](mailto:mary@abpath.org)

**Subspecialty Certification**  
[renee@abpath.org](mailto:renee@abpath.org)

**Continuing Certification**  
[john@abpath.org](mailto:john@abpath.org)

**ABPath CertLink®**  
[abpath@mycertlink.org](mailto:abpath@mycertlink.org)

**General Inquiries**  
[questions@abpath.org](mailto:questions@abpath.org)

Follow the American Board of Pathology (ABPath) on  
Facebook, LinkedIn, Instagram, and X.