



AMERICAN BOARD OF PATHOLOGY

# Annual Report

2022

YEAR IN REVIEW

HIGHLIGHTING PROGRAM

ENHANCEMENTS

---

One Urban Centre, Suite 690  
4830 West Kennedy Boulevard  
Tampa, Florida 33609  
<https://www.abpath.org>

## TABLE OF CONTENTS

Message from the President.....	4
2022 ABPath Highlights.....	6
CC Program.....	11
Cooperating Societies.....	14
Exams.....	16
Financials.....	20
Trustees.....	22
Volunteers.....	24
ABPath Publications.....	26
Staff.....	27
New Diplomates.....	28

# About The American Board of Pathology

## WELCOME

The American Board of Pathology (ABPath) was established in 1936 to advance the specialty of pathology and ensure the competence of pathologists for the benefit of the public. Certification by the ABPath is a hallmark of public and professional trust. As we face new challenges in healthcare, the vital role of board-certified pathologists is more important than ever. Our Mission and Vision statements exemplify our commitment to promote excellence in pathology and maintain the highest standards of care.

## WHAT WE DO

The American Board of Pathology issues primary certificates in Anatomic and Clinical Pathology, Anatomic Pathology, Clinical Pathology, Anatomic Pathology/Neuropathology, and certification in eleven subspecialties.

## MISSION

The mission of the American Board of Pathology, a member of the American Board of Medical Specialties, is to serve the public and advance the profession of pathology by setting certification standards and promoting lifelong competency of pathologists.

## VISION

The American Board of Pathology improves the health of the public by promoting excellence in the practice of pathology.



## STRATEGIC GOALS

---

1. Identify and implement relevant and meaningful processes for the assessment of residents and fellows in initial certification programs.
2. Increase the value of Continuing Certification programs by promoting lifelong learning, creating relevant assessments, and supporting diplomates in their efforts to stay current in their area of practice.
3. Increase diplomates' and other stakeholders' satisfaction with and perceived value of ABPath and certification.
4. Develop infrastructure and implement processes that support and promote strategic and organizational effectiveness.
5. Ensure long term financial viability of the ABPath.
6. Increase the effectiveness of the Board of Trustees.

# Message From The President



In 2022, the American Board of Pathology (ABPath) emerged from the COVID-19 pandemic and resumed in-person meetings for our Trustees, test committees, and with our Cooperating Societies. But there is no going back on some of the pandemic-motivated changes. For the second year, we successfully administered our Primary and Subspecialty certification examinations through Pearson VUE Professional Test Centers—and closed our Tampa examination center, selling or donating the microscopes and computers. Staff has returned to the office several days a week on a rotating basis, but, like many businesses, we found that our dedicated employees work effectively and efficiently from home at least part of the time. This arrangement is likely to continue.

Dr. Gary Procop officially began his new role as ABPath's chief executive officer in 2022. His leadership and vision for the future of the Board were immediately apparent and will be transformational in the years ahead. Delayed by COVID-19, we finally were able to host a dinner to recognize and thank our prior CEO, Dr. Rebecca Johnson. It was a personal honor for me to recount for Rebecca and the attendees her many accomplishments during her leadership and years of service to ABPath as a Trustee. Our diplomates and future candidates may not realize her impact as CEO, but they will be the beneficiaries of her tenure throughout their careers. We will miss Rebecca and her husband Michael, who always ensured a lively social program at the Trustee meetings.

Three Trustees and Past Presidents, Dr. Susan Fuhman, Dr. Karen Kaul, and Dr. Steven Swerdlow, completed their fourth three-year term in 2022. They have been elected as Life Trustees and will be honored for their long service to the Board at a dinner at this summer's Trustee meeting. It goes without saying that their leadership and service were invaluable over the course of their long terms. The Nominating Committee, under the direction of Secretary, Dr. Barbara Sampson, had the difficult and important task of conducting a search for new Trustees. On their recommendation, the Board elected Drs. James R. Cook, Jennifer Laudadio, and Julie D. Kingery. Their terms began in January 2023. Please see their profiles on our website <https://www.abpath.org/index.php/announcements/616-american-board-of-pathology-welcomes-new-board-members>

Two additional pathology societies, the Association for the Advancement of Blood and Biotherapies (AABB) and the American Association of Neuropathologists (AANP) became Cooperating Societies of the ABPath, bringing the number of Cooperating Societies to 15 at the end of 2022. The spring meeting with the Cooperating Societies began the process of defining content specifications. Other than the pub-

lished “examination blueprints” showing the number of questions in broad topic areas, the ABPath has not yet provided more explicit guidance regarding the expected knowledge, skills and judgment expected of candidates for certification. While this process will take time with multiple opportunities for input from program directors, trainees and diplomates, and our Cooperating Societies, the goal is to be transparent and produce detailed documents defining learning objectives for each stage of pathology training: early learners, completion of residency, and fellowship level. The Test Development and Advisory Committees have already begun the process by reviewing content specification documents of other ABMS Specialties and analyzing our current question category codes.

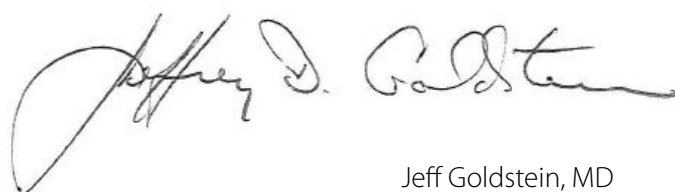
Content specification fed directly into the topic of the Trustees’ summer retreat: Assessment During Training. Several ABMS Boards already do this. Once content at different training levels is defined, one possible long-term goal may be to move some competency assessments out of the end-of-training high-stakes examination and into residency. This would also enable alternate types of assessment besides multiple-choice questions. One decision that came out of the Board’s retreat discussions was to pilot a simulated sign-out. This will be voluntary, formative, and competency-based whereby residents and fellows can test and hone their skills and continue to learn in a safe space. Breast pathology was selected as the area for the initial pilot, and the informatics to support this project are already in progress.

Recognizing that teaching of histology is rudimentary in many medical school curricula, Dr. Procop has taken on the personal project of developing an online histology primer with self-testing capability.

This will not only be a resource to establish baseline knowledge for incoming pathology residents, but would also be available to medical students, pathologist assistant students, and even undergraduates to perhaps stimulate interest in pathology as a career.

2022 also brought changes to the Board’s Continuing Certification Program. Following ABMS approval to cease the 10-year Continuing Certification examination, ABPath CertLink® became mandatory. The prior participation standard needed to transition to a performance standard, which was set as at least 60% correct responses cumulative over four years. The Board also developed a transparent process for remediation, and for reinstatement and recertification for those rare diplomates whose certification has lapsed.

For 2023, Dr. Ritu Nayar brings her dynamic and creative energy to the presidency. ABPath presidential years go by quickly and new initiatives are rarely completed in one’s term. Dr. Nayar’s enthusiasm will propel ongoing projects forward and identify new opportunities for ABPath to serve the public and advance the profession of pathology. I am grateful for the privilege to have served as ABPath’s President, and I am looking forward to my remaining years as a Trustee.



Jeff Goldstein, MD  
ABPath President 2022



# 2

## ABPath Highlights

### ASSOCIATION FOR THE ADVANCEMENT OF BLOOD AND BIOTHERAPIES AND THE AMERICAN ASSOCIATION OF NEUROPATHOLOGISTS JOINED ABPATH'S COOPERATING SOCIETIES

In 2022, ABPath welcomed two new organizations as Cooperating Societies. The Association for the Advancement of Blood and Biotherapies (AABB) and the American Association of Neuropathologists (AANP). Cooperating Societies serve in an advisory capacity to the ABPath regarding issues pertaining to training, education, and certification in Pathology. The Trustees seek input and advice from Cooperating Societies on an ad hoc basis and at the annual spring meeting of the Board of Trustees.



## IMPROVEMENT IN MEDICAL PRACTICE (IMP) CREDIT

In March 2022, the ABPath Board of Trustees approved the option to receive credit for Improvement in Medical Practice activity to Volunteer Item Writers for ABPath CertLink, the online longitudinal assessment program for Continuing Certification. Volunteers who submit 36 or more questions in a calendar year can receive credit for one required activity. In 2023, the submission requirement changed to 21-35 items per year. Beginning in 2024, IMP will be referred to as Improvement in Health and Healthcare (IHHC). <https://www.abpath.org/index.php/announcements/594-receive-improvement-in-health-and-health-care-ihhc-credit>

## IMPROVEMENT IN MEDICAL PRACTICE

Each pathologist must participate in at least two PI/QA activities or programs per two-year period appropriate for their principal professional activities. An activity option can only be reported once per year. The only exception is the ABMS Portfolio Program which will count for every year cover by an activity's reported duration.

Below are a few examples. More detail can be found on the ABPath website: <https://www.abpath.org/index.php/continuing-certification/cc-reporting/improvement-in-medical-practice>

- Cytology proficiency testing
- Laboratory Inspector
- Institutional quality committee
- Slide review program (e.g., CAP's PIP, ASCP's CheckPath, etc.).
- Participated in a QAVPI program
- ABMS Portfolio Program.
- Choosing Wisely
- Joint Commission OPPE
- Peer reviewed publication
- ABPath CertLink® item writer

# 2022



## THREE-YEAR EXTENSION OF THE PRACTICE PATHWAY FOR CERTIFICATION IN CLINICAL INFORMATICS

The American Board of Medical Specialties (ABMS) approved ABPath's request to extend the time-limited Practice Pathway for the Clinical Informatics subspecialty. The extension is for three years through the 2025 exam cycle.

The Clinical Informatics certification exam is a joint and equal function of the ABPath and the American Board of Preventive Medicine. The Practice Pathway allows physicians with substantial experience in the practice of Clinical Informatics, but who have not completed an AC-GME-accredited fellowship in Clinical Informatics, the opportunity to apply for the Clinical Informatics certification exam. For more information and the rationale for the request to extend the Practice Pathway, visit [\*Extension of the Practice Pathway for Certification in Clinical Informatics.\*](#)





## ABPATH PAYMENT SITE FOR VERIFICATIONS

ABPath launched a new secure site to accept online credit card payments for Verification Requests and Requests for Replacement Certificates. From the ABPath website, users will be directed to a new ABPath payment site to complete the request forms and submit payment.

For more information and links to the site:

<https://www.abpath.org/index.php/announcements/617-new-abpath-payment-site>

## TRAINING REQUIREMENT FOR NON-ABPATH DIPLOMATES

ABPath announced a change in the training requirement for physicians certified by other ABMS member boards who would like to be certified in Blood Bank Transfusion Medicine, Medical Microbiology, Chemical Pathology, or Hematopathology by the ABPath.

Diplomates certified by an ABMS member board other than ABPath must only complete one year (12 months) of ACGME-accredited training in the subspecialties listed above to be eligible for the subsequent subspecialty exam. This policy supersedes the previous policy that required two years of subspecialty training for non-ABPath diplomates. The requirement for pathologists certified in AP and/or CP by ABPath remains unchanged at 12 months of ACGME-accredited training.

The change was approved at the ABPath Fall 2022 Board of Trustees meeting and is reflected in the 2023 Booklet of Information.

## NEW MEMBERS TO THE BOARD OF TRUSTEES WELCOMED

The Trustees of the American Board of Pathology (ABPath) elected three new members to the Board of Trustees with terms beginning on January 1, 2023. The new Trustees are James R. Cook, MD, PhD; Julie D. Kingery, MD; and Jennifer Laudadio, MD. They have expertise in Hematopathology, Clinical Pathology and Molecular-Genetic Pathology, respectively.



**Julie D. Kingery, MD**



**Jennifer Laudadio, MD**



**James R. Cook, MD, PhD**

## ABPATH CERTLINK IMPROVEMENT PLAN TO ENHANCE USER EXPERIENCE

In 2022, ABPath began the planning of a two-year quality assurance/quality improvement initiative for ABPath CertLink® (ABPCL), the online longitudinal assessment platform for the Continuing Certification Program. This initiative is designed to enhance the user experience and ensure that the program continues to support the highest standards of continuous learning and professional development of board-certified pathologists. The initiative was formally launched in 2023. [Here is more information on the Improvement Plan.](#)



## A NEW AND IMPROVED PAGE FOR THE CONTINUING CERTIFICATION PROGRAM IN PATHWAY

To provide a more user-friendly experience for diplomates, the American Board of Pathology (ABPath) updated the Continuing Certification (CC) page in PATHway, the ABPath's online portal for residents and diplomates. The new CC page contains everything diplomates need to know to satisfy their CC requirements on one page.

The CC Program is made up of two main components to maintain board certification, continuous participation in ABPCL and completing reporting forms every two years. Diplomates will now be able to view a customized page displaying the current status of those requirements all in one location. In addition, diplomates can pay the annual fee through a link on this page.

We will continue to refine the PATHway platform for the ease of residents and diplomates applying for and/or maintaining board certification in pathology.

Check out the updated page by logging into [PATHway](#) and selecting the CC Program tab.

# Continuing Certification

## CHANGES TO THE CC PROGRAM IN 2022

- All diplomates enrolled in the CC Program will be automatically registered to participate in ABPath CertLink (ABPCL) to meet the Assessment requirement of the CC Program.
- ABPath discontinued the administration of the 10-year Continuing Certification exam.
- Beginning in January 2022, the required performance standard for ABPCL was implemented at 60% correct or greater, cumulative over four years.
- Two quality assurance activities are required during a two-year reporting period instead of one per year.
- The CC Program fee is due annually as opposed to biennially. The cost did not change and remains at \$150 due each year.

## ABPATH CERTLINK® HIGHLIGHTS

ABPath Certlink is the official assessment for the Continuing Certification Program. The number of registered participants at the end of 2022 was 11,270.

ABPath  CertLink®



**11,270**

*Total Registered Diplomates*



## MEET OUR PLATINUM VOLUNTEER ITEM WRITERS!

ABPCL is successful due in part to the volunteer Item Writers who contribute questions to be used in the CertLink assessment. We are pleased to introduce our top ABPCL Volunteer Item Writers of 2022: Borislav Alexiev, MD; David Alter, MD; Jordan Colson, MD;

and Zahra Maleki, MD. Each has contributed at least forty-eight items to reach the Platinum tier of the AB-Path Item Writer Volunteer program! We thank them for their dedication to Continuing Certification and the specialty of pathology.

### Borislav A Alexiev, MD



Dr. Alexiev received his MD from the Medical University of Sofia, Bulgaria and completed Residency in Anatomic and Clinical Pathology at the University of Maryland School of Medicine and a Fellowship in Surgical Pathology at Johns Hopkins Hospital. After a short spell at the Department of Pathology at Roswell Park Cancer Center, he joined the Department of Pathology at University of Maryland School of Medicine in 2010, spending 6 years on faculty before accepting the position of Associate Professor at Northwestern University Feinberg School of Medicine and Surgical Pathologist at Northwestern Memorial Hospital in 2016. He was appointed Director of Surgical Pathology at Northwestern Memorial Hospital in May 2021 and Professor of Pathology at Northwestern University Feinberg School of Medicine in September 2022.

Dr. Alexiev is Board certified in Anatomic Pathology. His clinical practice includes Surgical Pathology at Northwestern Memorial Hospital and his expertise has focused on head and neck and bone and soft tissue pathology.

### David Alter, MD



Dr. David Alter is board certified in Clinical Pathology and Chemical Pathology. Since July 2000, he has practiced in Clinical Pathology/Clinical Chemistry in both community and academic environments. Initially, Dr. Alter was the primary Clinical Pathologist for a private practice pathology group serving a community hospital system in Michigan, where he served as associate Medical Director for Chemistry, Immunology, Point of Care and Transfusion sections. In addition, he held CLIA laboratory medical director licenses for five remote sites.

In 2018, Dr. Alter joined the Emory School of Medicine as Associate Professor and Director of Clinical Chemistry in the Department of Pathology and Laboratory Medicine. At Emory, he embraced the academic trifecta as he grows his practice away from service/operational aspects to include teaching and scholarship.

Dr. Alter says, *"In my opinion, the Continuing Certification Program provides an efficient mechanism to maintain certification without having to attend an exam every several years using a process that provides real time feedback. As an individual who has a non-time-limited certification, I have found it very helpful for my personal subject matter review."*



## Jordan Colson, MD



Dr. Jordan Colson is Clinical Assistant Professor, Assistant Medical Director of Microbiology Lab and UHealth Director, Pathology of Infectious Diseases at the University of Miami Miller School of Medicine. Dr. Colson is board certified in Anatomic and Clinical Pathology and Medical Microbiology.

*“Education has always been near and dear to my heart. While it is undeniable that pathologists often experience poor visibility in the fast-paced fee-for-service world of modern medicine, our placement at the heart of clinical decision making endows us with inescapable influence and responsibility. In my experiences at the University of Missouri-Kansas City AP/CP residency, the Cleveland Clinic’s Clinical Microbiology fellowship, and in my current position at the University of Miami I have seen the power of education through my interactions with learners ranging from high school students to attendings. That is why I am proud to contribute to Certlink. I see its combination of standardization, flexibility, and diplomat-driven content wrapped in a convenient platform as the future for continuing education. As lifelong learners, we share the responsibility of teaching not only our students but each other and I firmly believe that Certlink will make us more effective in rising to that challenge.”*

## Zahra Maleki, MD



Dr. Zahra Maleki is an Associate Professor of Pathology at the Johns Hopkins Hospital, Division of Cytopathology at the Johns Hopkins University School of Medicine in Baltimore, Maryland. She is also the Director of Histology and Pathobiology at the Johns Hopkins Medical School.

She completed Pathology residency in Anatomic Pathology and Clinical Pathology at the Virginia Commonwealth University School of Medicine, followed by her first fellowship in surgical pathology at the Virginia Commonwealth University School of Medicine in Richmond, Virginia. She completed her second fellowship in Cytopathology at the University of Miami School of Medicine in Miami, Florida. She is board certified in Anatomical Pathology, Clinical Pathology and Cytopathology.

She believes the Continuing Certification (CC) Program provides a unique opportunity for pathologists to learn about the most advanced practices in pathology and stay updated. *“Simply put, the aim of the Continuing Certification (CC) Program is for all pathologists to excel in their practice.”* This, she says is the strongest motivation for her to contribute to ABPCL. She enjoys serving her pathology community through the ABPCL Program.

# Cooperating Societies

The ABPath has Cooperating Societies we collaborate with to identify and address issues of importance to the profession of pathology. Through these valuable relationships, our Cooperating Societies support diplomates in their life-long learning and improvement in practice, their participation in Continuing Certification, and documenting their participation in educational and quality assessment activities.

The Societies' participation in our annual ABPath Summit of Cooperating Societies has been especially beneficial as training requirements for board certification evolve. In 2022, our Trustees met with the Societies in Chicago and discussed the importance of transparency with certification exam content and collected content specification information for exams from each society. The feedback collected will be instrumental in the development of the content specification for each ABPath certification exam.

## 2022 COOPERATING SOCIETIES

- *Academy of Clinical Laboratory Physicians and Scientists*
- *American Association of Neuropathologists*
- *American Medical Association Pathology Section Council*
- *American Society for Clinical Pathology*
- *American Society for Investigative Pathology*
- *American Society of Cytopathology*
- *Association for Molecular Pathology*
- *Association of Directors of Anatomic and Surgical Pathology*
- *Association of Pathology Chairs*
- *Association for the Advancement of Blood and Biotherapies*
- *College of American Pathologists*
- *National Association of Medical Examiners*
- *Society for Hematopathology*
- *Society for Pediatric Pathology*
- *United States and Canadian Academy of Pathology*





# Board Certification Examinations

## ADMINISTRATION HISTORY OF ABPATH CERTIFICATION

ABPath offers four Primary certificates and eleven Subspecialty certificates in pathology. The table below reflects when we began offering each Primary

and Subspecialty certification and how many certificates have been issued from inception through 2022.

*\*\*Statistics have been updated to reflect the reassessment and rescoring of the 2022-2024 Primary and Subspecialty exams that was conducted in October 2024.*

## EXAMINATION STATISTICS

Certification	Initial Year	Number of Certificates
Anatomic Pathology (AP)	1936	9,711
Anatomic Pathology and Clinical Pathology (AP/CP)	1936	25,265
Anatomic Pathology and Neuropathology (AP/NP)	1961	446
Clinical Pathology (CP)	1936	3,975
Blood Banking/Transfusion Medicine (BB/TM)	1973	1,644
Chemical Pathology (CH)	1951	182
Clinical Informatics (CI)	2013	210
Cytopathology (CY)	1989	4,884
Dermatopathology (DP)	1974	1,864
Forensic Pathology (FP)	1959	1,807
Hematopathology (HP)	1955	3,477
Medical Microbiology (MB)	1950	397
Molecular Genetic Pathology (MG)	2001	779
Neuropathology (NP)	1948	634
Pediatric Pathology (PP)	1990	613







# Primary Exam Statistics

The ABPath uses criterion-referenced scoring for its certification examinations. Setting the criterion standard for each exam is performed every 3-5 years. The number of candidates passing the examinations may not match the number of candidates certified for several reasons:

1. Some AP/CP candidates, both first-time takers and repeaters, take only one portion (either AP or CP) of the examination. These candidates are not certified until both AP and CP are passed.

2. Certified candidates include AP/CP candidates who passed either the AP or CP examination previously and requested single certification during the reporting year.

3. Certified candidates also include candidates who passed the examinations in a previous year but did not provide documentation of licensure or other required information until the reporting year.

See the [ABPath website](#) for examination information.

## ANATOMIC AND CLINICAL PATHOLOGY

	Total Candidates		First-Time Takers			Repeaters		
	#	% Pass	#	# Pass	% Pass	#	# Pass	% Pass
AP	723	84%	618	560	91%	105	46	44%
CP	582	92%	531	509	96%	51	24	47%

## 5-YEAR CERTIFIED REPORT

Primary	2018	2019	2020	2021	2022
APCP	485	451	397	533	500
AP only	78	58	73	105	100
CP only	43	40	25	55	54
APNP	11	10	8	17	7

## PRIMARY EXAM PASS RATES

### % PASS = SPRING EXAM PASS RATE REPORT

Primary	2018 % Pass	2019 % Pass	2020 % Pass	2021 % Pass	2022 % Pass
AP only	89	82*	85	82	87
CP only	92	85*	88	94	94

\*New criterion standard applied

\*\*Statistics reflect October 2024 reassessment and rescoring

# Subspecialty Exam Statistics

## 2022 SUBSPECIALTY CERTIFICATION EXAMINATIONS

	Total Candidates		First-Time Takers			Repeaters		
	#	% Pass	#	# Pass	% Pass	#	# Pass	% Pass
BB/TM	47	62	41	28	68	6	1	17
CH	-	-	-	-	-	-	-	-
CI	38	66	32	20	63	6	5	83
CY	137	83	120	108	90	17	6	35
DP	46	93	41	39	95	5	4	80
FP	54	98	52	51	98	2	2	100
HP	120	90	114	106	93	6	2	33
MB	13	85	13	11	85	-	-	-
MG	61	84	59	51	86	2	0	0
NP	24	92	23	22	96	1	0	0
PP	22	82	22	18	82	-	-	-
FPclinMB*	-	-	-	-	-	-	-	-

\*FPclinMB = Focus Practice Designation-Clinical Microbiology

## 5-YEAR CERTIFIED REPORT

Subspecialty	2018	2019	2020	2021	2022
BB/TM	49	47	39	39	29
CH	2	1	2	-	-
CI	16	18	17	27	25
CY	142	137	104	109	115
DP	52	45	34	41	43
FP	49	38	47	38	53
HP	140	119	116	108	110
MB	12	14	6	18	10
MG	59	59	48	49	51
NP	15	12	17	11	16
PP	20	23	16	20	18
FPclinMB*	-	-	1	-	-

\*FPclinMB = Focus Practice Designation-Clinical Microbiology



## SUBSPECIALTY EXAMINATION PASS RATES

Subspecialty	2018 % Pass	2019 % Pass	2020 % Pass	2021 % Pass	2022 % Pass
BB/TM	89	96	89*	81	62
CH	100	100	100	-	-
CI	94	78	89	77	66
CY	98	96	86*	86	83
DP	90*	98	95	87	93*
FP	94	93	89*	95	98
HP	98	97	94*	94	90
MB	100	100	100	100	85*
MG	98	98	98*	94	84
NP	100*	96	100	90	92*
PP	81*	96	89	91	82*
FPClinMB**	-	-	100	-	-

\*New criterion standard applied

\*\*FPClinMB = Focus Practice Designation-Clinical Microbiology

## Continuing Certification

### PARTICIPATION STATISTICS

	2018	2019	2020	2021	2022
New Certificates Enrolled	1175	1054	933	1140	1088
Certificates Lapsed/ Revoked	88	88	64	60	46
New Diplomates Enrolled	638	583	519	731	658
Diplomates Lapsed/ Revoked	71	63	52	49	33

Total Diplomates Enrolled at the End of 2022: 11,160

### TOP IMPROVEMENT IN MEDICAL PRACTICE (IMP) ACTIVITIES REPORTED BY DIPLOMATES IN 2022

1. ABPath-Approved Slide Review Program
2. Department or Hospital/Institution Quality Assurance Committee
3. CLIA Mandated Cytology Proficiency Testing

\*\*Statistics reflect October 2024 reassessment and rescoring

# Financial Report

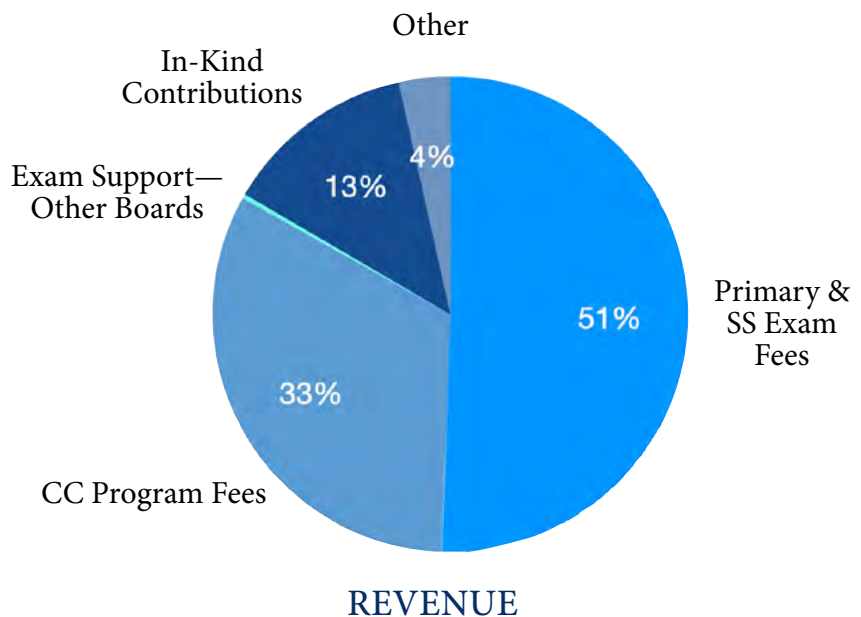
FOR FISCAL YEAR 2022

## REVENUE

ABPath revenue is generated from multiple sources. Candidates pay examination fees for the Primary and Subspecialty Certification exams and Diplomates pay a fee for administration of the Continuing Certification program. The ABPath supports two other boards with their exams each year; the revenue is captured under Exam Support. Examination questions are written by volunteer pathologists. Per the IRS, their services must be reported as an In-Kind Contribution (equivalent time a pathologist would be paid had they charged for these services).

Revenue		
<b>Primary/SS Examination Fees, Net of Refunds</b>	50.55%	\$3,313,302
<b>CC Examination Fees, Net of Refunds</b>	0.06%	\$4,000
<b>CC Reporting*</b>	32.51%	\$2,130,650
<b>Exam Support</b>	0.30%	\$19,397
<b>In-Kind Contributions</b>	13.07%	\$856,802
<b>Other</b>	3.51%	\$230,311
<b>Total Revenue w/o Restrictions</b>	<b>100%</b>	<b>\$6,554,462</b>

*\*In 2021, the annual CC reporting fee was raised from \$50 to \$150 and is now collected on a yearly basis. This change led to the inclusion of payments in 2022 from pathologists who would have previously submitted their fee payment in 2023, resulting in a temporary increase in revenue.*





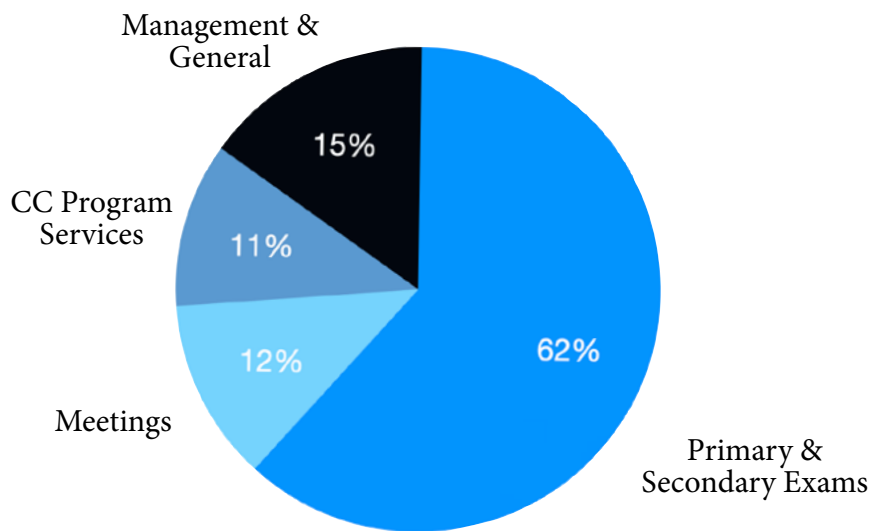
## EXPENSES

Examination expenses cover the cost of credentialing candidates; the development, administration via Pearson VUE test centers, and scoring of the exams; and reporting results. Meeting expenses include the travel and administrative expenses for volunteer test committee members and Trustees. Management and general expenses include employee salaries, benefits, insurance, information technology support and licensing, facility and equipment rental and maintenance, ABMS member fees, and the cost of providing services to our diplomates, such as AC-CME PARS. CC Program Services includes all of the above type expenses that are directly affiliated with the CC Program to include ABPath CertLink®.

Expenses		
<b>Primary/SS Program Services</b>		
Examinations	61.66%	\$4,035,452
Meetings	12.17%	\$796,448
CC Program Services **	11%	\$705,000
<b>Management &amp; General***</b>	<b>15.40%</b>	<b>\$1,007,744</b>
<b>Total Expenses</b>	<b>100%</b>	<b>\$6,544,644</b>

\*\* Source: CC&ABPCL2022

\*\*\* Also includes management/oversight and overhead costs of the CC Program.



EXPENSES

# The 2022 Board of Trustees

The ABPath is governed by 12 physician members and one public member. Each member is highly esteemed and accomplished in their respective fields and subspecialty. ABPath Trustees are responsible for setting the strategic goals and governing and upholding the integrity of the Board's mission to serve the public and advance the profession of pathology by setting certification standards and promoting lifelong competency of pathologists.



**JEFFREY D. GOLDSTEIN, MD**

Los Angeles, California  
President



**RITU NAYAR, MD**

Chicago, Illinois  
Vice President



**BARBARA SAMPSON, MD, PhD**

New York, New York  
Secretary



**MOHIEDEAN GHOFRANI, MD, MBA**

Vancouver, Washington  
Treasurer



**EDWARD R. ASHWOOD, MD**

Aurora, Colorado  
Immediate Past President

## Officers



**KATHLEEN G. BEAVIS, MD**  
Chicago, Illinois



**CONSTANCE M. FILLING, EdD**  
Washington, DC  
Public Member



**SUSAN A. FUHRMAN, MD**  
Columbus, Ohio



**MARK FUNG, MD, PHD**  
Burlington, Vermont



**ERIC F. GLASSY, MD**  
San Pedro, California



**KAREN L. KAUL, MD, PhD**  
Evanston, Illinois



**STEVEN H. SWERDLOW, MD**  
Pittsburgh, Pennsylvania



**MATHEW J. WASCO, MD**  
Ann Arbor, Michigan

# ABPath Volunteers

## 2022 TEST DEVELOPMENT AND ADVISORY COMMITTEES (TDAC)

The ABPath appreciates the many contributions of our Test Development and Advisory Committee members who volunteer their time as subject matter experts to provide direction and content for certification examinations. Each of the committees is chaired by an ABPath Trustee. In 2022, our TDAC members worked efficiently and effectively using a combination of in-person and virtual meetings. We thank them for contributing their time and talents.

The members of the Test Development and Advisory Committees for 2022 were as follows:

### **ANATOMIC PATHOLOGY**

Mohiedean Ghofrani, MD, Chair  
Kimberly Allison, MD  
Jennifer Boland-Froemming, MD  
Deborah L. Cook, MD  
Robert P. Hasserjian, MD  
John P. Higgins, MD  
Jason L. Hornick, MD  
Susan Muller, MD  
Joseph Rabban, MD  
Rhonda Yantiss, MD  
Qihui Zhai, MD

### **ANATOMIC PATHOLOGY ABPATH CERTLINK®**

Ritu Nayar, MD, Chair  
Eric Glassy, MD, Vice Chair  
Ahmed Alomari, MD  
Luis Blanco, MD  
Kyle T. Bradley, MD  
Greg G. Davis, MD  
Sarah Gibson, MD  
Evita Henderson-Jackson, MD  
Matthew Kuhar, MD  
Aparna Mahajan, MD  
Ajit S. Paintal, MD

### **BLOOD BANKING/ TRANSFUSION MEDICINE**

Mark Fung, MD, Chair  
Sally Campbell-Lee, MD  
Meghan Delaney, MD  
Nancy M. Dunbar, MD  
Marisa B. Marques, MD  
Arand Pierce, MD  
Alyssa Ziman, MD

### **CHEMICAL PATHOLOGY**

Edward Ashwood, MD, Chair  
Andrew Hoofnagle, MD  
Gary L. Horowitz, MD  
Sean Li, MD  
Stacy E. Melanson, MD  
Caitlin Schein, MD

### **CLINICAL PATHOLOGY ABPATH CERTLINK®**

Susan Fuhrman, MD, Chair  
Mark Fung, MD, PhD, Chair Elect  
Matthew Wasco, MD, Vice Chair Elect  
Elizabeth Courville, MD  
Melkon DomBourian, MD  
Sean Li, MD  
Mark Lovell, MD  
Robin Patel, MD  
Nancy Rosenthal, MD  
Karl S. Theil, MD

### **CYTOPATHOLOGY**

Ritu Nayar, MD, Chair  
Scott Anderson, MD  
Kristen Atkins, MD  
Deborah Chute, MD  
Evita Henderson-Jackson, MD  
Carrie Marshall, MD  
Swati Mehrotra, MD  
Tolgay Ocal, MD

### **DERMATOPATHOLOGY**

*(Includes ABPath and American Board of Dermatology appointees)*

Tammie Ferringier, MD, Chair  
Matthew Wasco, MD, Vice Chair  
Ryan Hick, MD  
Matthew Kuhar, MD  
Melissa Piliang, MD  
Sara Shalin, MD  
Uma Sundram, MD  
Michael Tetzlaff, MD  
Claudia Vidal, MD

### **FORENSIC PATHOLOGY**

Barbara Sampson, MD, Chair  
Maura DeJoseph, MD  
John Lacy, MD  
Jonathan R. Lucas, MD  
Owen Lee Middleton, MD  
Erin Presnell, MD  
Robert Ross Reichard, MD

### **HEMATOPATHOLOGY**

Steven Swerdlow, MD, Chair  
Dan Arber, MD  
Dong Chen, MD  
James R. Cook, MD  
Casey Gooden, MD  
Russell Higgins, MD  
Carla Wilson, MD

**TDAC**  
Test Development and  
Advisory Committees



#### MANAGEMENT AND INFORMATICS

Susan Fuhrman, MD, Chair  
Sterling Bennett, MD  
Donald Karcher, MD  
Bruce Levy, MD  
Nicole Riddle, MD  
Christopher Lee Williams, MD

#### MEDICAL MICROBIOLOGY

Kathleen Beavis, MD, Chair  
Gordon L. Love, MD  
Cindy McCloskey, MD  
Robin Patel, MD  
Chris Polage, MD  
Daniel Rhoads, MD  
Kamaljit S. Singh, MD  
Charles W. Stratton, MD

#### MOLECULAR GENETIC PATHOLOGY

*(Includes ABPath and American Board of Medical Genetics and Genomics appointees)*

Karen Kaul, MD, PhD, Chair  
Miriam G. Blitzer, PhD  
Jessica Booker, PhD  
Aaron D. Bossler, MD, PhD  
Allison Cushman-Vokoun, MD  
  
Kristin Fiebelkorn, MD  
Jane Gibson, MD  
Karen Mann, MD  
Keyur Patel, MD  
Catherine Rehder, MD  
Lynette Sholl, MD

#### NEUROPATHOLOGY

Eric Glassy, MD, Chair  
Anne Buckley, MD  
Edward Lee, MD  
Maria Beatriz S. Lopes, MD  
Maria Martinez-Lage, MD  
Fausto Rodriguez, MD  
Matthew Schniederjan, MD  
Anthony Yachnis, MD

#### PEDIATRIC PATHOLOGY

Jeffrey Goldstein, MD, Chair  
Jason Jarzembowski, MD  
Philip J. Katzman, MD  
Kathleen K. Nicol, MD  
Heather Rytting, MD  
Charles Timmons, MD  
Sara Vargas, MD

## CC ADVISORY COMMITTEE

The Continuing Certification (CC) Advisory Committee is made up of volunteer diplomates with diverse backgrounds, specialties, and experience. It is chaired by ABPath Trustee, Dr. Eric Glassy. The Committee advises and provides feedback to the ABPath Board of Trustees for continuous evaluation and improvement of Continuing Certification from a diplomate's perspective.

#### 2022 COMMITTEE MEMBERS

La'Tonzia Adams, MD  
Daisy Alapat, MD  
Michelle Aurelius, MD  
Deniz Peker Barclift, MD  
Nick Batalis, MD  
Jennifer Findeis-Hosey, MD  
Raul Gonzalez, MD  
Jennifer Kasten, MD  
Matthew Kuhar, MD  
Rose-Marie Rodriguez-Oringo, MD  
Jaclyn Rudzinski, MD  
Sonia Walia, MD  
Roseann Wu, MD  
Debra Zynger, MD

**CC Advisory  
Committee**  
Continuing Certification

## RESIDENT AND FELLOW ADVISORY COMMITTEE

The ABPath Resident and Fellow Advisory Committee is made up of Pathology Residents and Fellows who were selected to provide feedback and suggestions for improvement to the board certification process. The committee is chaired by ABPath CEO Dr. Gary Procop.

#### 2022 COMMITTEE MEMBERS

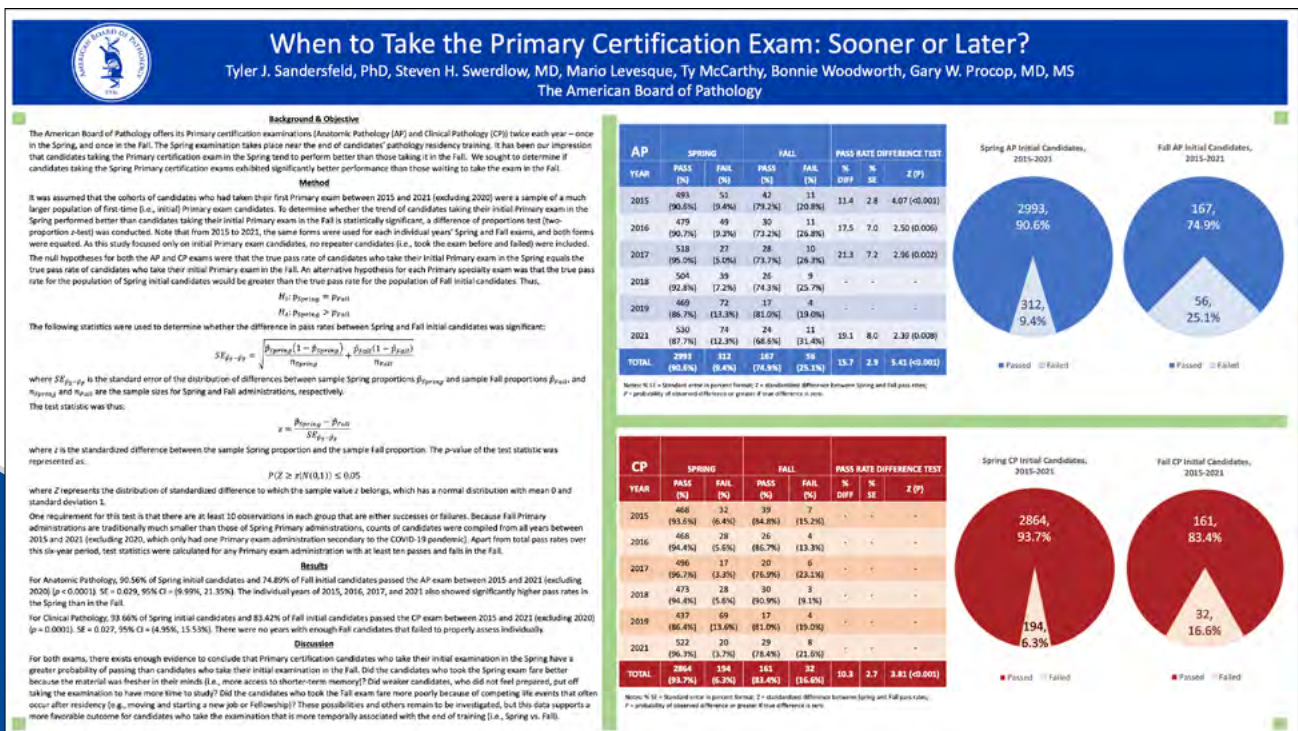
Hanadi El Achi, MD  
Mischa Covington, MD  
Brian Cox, MD  
Joshua Davis, MD  
Maryam Foroughi, MD  
Savanah Gisriel, MD  
Aidas J. Mattis, MD  
Chukwuemeka Oriala, MD  
Neda Wick, MD

**Resident  
& Fellow  
Advisory Committee**



# ABPath Publications

ABPath Psychometrician Tyler J. Sandersfeld, PhD, and Ty McCarthy, AB-Path COO presented the poster *When to Take the Primary Certification Exam: Sooner or Later?* at the American Board of Medical Specialties Annual Meeting in September 2022 in Chicago, IL. Other contributors were ABPath Trustee Steven H. Swerdlow, MD; Mario Levesque and ABPath CEO Gary W. Procop, MD, MS.



View and Download the Poster

<https://shrtm.nu/L9tb>



**Gary W. Procop, MD, MS**  
Chief Executive Officer

*Pictured from left to right:  
Front row: Kasey Williamson,  
Renee Holder, Geri Wills,  
Ty McCarthy, Dr. Gary W. Procop, Anthony  
Schlinsog, Josie Santos,  
Amanda Zombros  
Back row: Colette Earnest, Mary Pyfrom,  
Clarita Scioscia, Tyler Sandersfeld, Alissa  
Eagle, Bonnie Woodworth, John Lemke,  
Mario Levesque  
Not pictured: Gabriela Lago and  
Patty Schnoor*

# ABPath Staff

Our staff is proud to support the ABPath mission and strategic goals. They work very hard to support our candidates and diplomates in achieving and maintaining their board certification.

**THE 2022 ABPATH STAFF**

Alissa Eagle  
*Administrative Assistant*

Amanda Zombro  
*Coordinator of Information Services*

Anthony Schlinsog  
*Chief Information Officer*

Bonnie Woodworth  
*Communications Director*

Clarita Scioscia  
*TDAC Coordinator*

Colette Earnest  
*ABPath CertLink® Support Specialist*

Gabriela Lago  
*Intermediate Full Stack Developer / IT Generalist*

Gary W. Procop, MD, MS  
*Chief Executive Officer*

Geri Wills  
*Accountant*

John Lemke  
*Continuing Certification Coordinator*

Josie Santos  
*Chief Financial Officer*

Kasey Williamson  
*ABPath CertLink® Coordinator*

Mario Lévesque  
*Senior Systems Developer*

Mary Pyfrom  
*Primary Certification Coordinator*

Patty Schnoor  
*Slide Librarian*

Reneé Holder  
*Subspecialty Certification Coordinator*

Ty McCarthy  
*Chief Operating Officer*

Tyler Sandersfeld, PhD  
*Psychometrician*



# 2022

## Newly Certified Diplomates

Congratulations to the Following  
Diplomates Who Received their  
Primary Board Certification in 2022

Emad Ibrahim Sultan Ababneh, MD  
Evi Edijala Abada, MD  
Nour Abd Almohsen, MD  
Adel Abdallah, MD  
Shahad Naseer Abdulameer, MD  
Maha Abdulla, DO  
Elizabeth Anne Abels, MD  
Abdul Majeed Abid, MD  
Anu Abraham, MD  
Syeda Fatima Absar, MD  
Kaia Marie Adams, MD  
Ayodele O Adelanwa, MD  
Mitra Afsharpad, MD  
Anupma Agarwal, MD  
Ashna Aggarwal, MD  
Talal Ahmad, DO  
Yembur Ahmad, MD  
Muhammad Ahmed, MD  
Raheel Ahmed, MD  
Sadhna Ahuja, MD  
Naomi Elizabeth Akagi, MD  
Hiba Ali Saeed Al Dallal, MD  
Tamadar A Al Doheyan, MD  
Abdulaziz Fahed Al Mana, MD  
Abdullah Hussain Abdullah Al-Bouri, MD  
Mouyed Alawad, MD  
Jay Alden, DO  
Mahmoud Aldyab, MD  
Wedad Alfarkh, MD  
Albert Alhatem, MD  
Aljunaid Alhussain, MD  
Aaih K Ali, MD  
Bassam Alkamachi, MD  
Rahaf Alkhateb, MD  
Abdullah Almajnooni, MD  
Fnu Alnoor, MD  
Abdullah M Alswied, MD  
Miguel Angel Alvarez, MD  
Juan Carlos Alvarez Moreno, MD  
Emily Nicole Alvey, MD  
Rofieda Alwaqfi, MD  
Bayan A Alzumaili, MD  
Erik Ames, MD  
Joanne Marie Ang, MD  
Kimon Argyropoulos, MD  
Alexander M Arispe, MD  
Kanika Arora, MD

Mustafa Erdem Arslan, MD  
Zarina Arutyunova, MD  
Sepideh Asadbeigi, MD  
Hamza Ashmila, MD  
Ifeyinwa Mary Asuzu, MD  
Mazen Alqera Atiq, MD  
Christopher C Attaway, MD  
Doaa Atwi, MD  
Sara R Avalos Hernandez, MD  
Tauhid H Awan, MD  
Mesrop Ayrapetyan, MD  
Farah Salih Baban, MD  
Donghwa Baek, MD  
Ji Dong Bai, MD  
Andrea Christine Bakker, MD  
Alexandra Balaban, MD  
Lame Balikani, MD  
Nicole Elizabeth Becker, MD  
Davsheen Bedi, MD  
Eduardo Benzi, MD  
Holly E Berg, DO  
Julia Berry, MD  
Walter Bachman Beversdorf, MD  
Sanica Bhele, MD  
Thomas Chad Binns, MD  
Alexander Franz Blank, MD  
Maria S Bloomquist, MD  
Bernadette Mielak Boac, MD  
Sampson Kwabina Boham, DO  
Paul Donald Boothe, MD  
Lisa Jocelyn Borretta, MD  
Kelly A Bowers, DO  
Baris Boyraz, MD  
Elizabeth Mae Brahmbhatt, MD  
Rachel Lynn Brancamp, MD  
Sanjay Bridgelall, MD  
Darren Brow, MD  
Frido Karl Ludwig Bruehl, MD  
Stephanie Bryant, MD  
Anna Budina, MD  
Hussam Abdulhamid O Bukhari, MD  
Matthew John Burky, DO  
Joseph Burt, MD  
Joshua M Buss, MD  
Monica Rachel Butcher, MD  
Paul Robert Buttar, DO  
Joseph Vincent Calderaro, MD

Lukas Ray Cara, MD  
Matthew Carda, DO  
Anthony Blake Cardillo, MD  
Timothy Clifford Carll, MD  
Marcelo Ferreira Cassini, MD  
Gregory Mark Chamberlin, MD  
Alison Christie Chan, DO  
Momal Tara Chand, MD  
Yasna Chaudhary, MD  
Hector Daniel Chavarria Bernal, MD  
Zachary Lawrence Chelsky, DO  
Heather I-Hsuan Chen-Yost, MD  
Stephen Cheney, MD  
Jason D Chesser, MD  
Ksenia Chezar, MD  
Steven Morrow Chirieleison, MD  
Saurav Chopra, MD  
Dianna C Chormanski, MD  
Jui Choudhuri, MD  
Aaron Willis Christensen, MD  
Katherine Cochrane, MD  
Tobias S Cohen, MD  
Gabriel Lee Collins, DO  
Peter Michael Conner, MD  
Nathan Cook, MD  
Sara Lynn Cook, MD  
James Corines, DO  
Hecca Yojen Cox, MD  
Matthew Jude Crabtree, MD  
Kelly Eileen Craven, MD  
Christopher R Cunningham, MD  
Joseph Michael Curran, MD  
Luke Cypher, MD  
Rebecca Claire Czaja, MD  
Fayez Daaboul, MD  
Alexandra Maria Danakas, MD  
David Daniel, MD  
Elizabeth Davaro, MD  
Shubha Dave, MD  
Haley Carlson Davis, MD  
Joshua W Davis, MD  
Katelynn Elizabeth Davis, MD  
Richard Clayton Davis, MD  
Kellen Katherine Dawson, MD  
Edward Alexander Dent, MD  
Fatemeh Derakhshan, MD  
Sapna Pradip Desai, MD

Sabina Desar, MD  
Nicole Stivers Deshmukh, MD  
Alicia Gabrielle Dessain, MD  
Julie Stein Deutsch, MD  
Pooja Devi, MD  
Michael Diamond, MD  
Julio Alexander Diaz-Perez, MD  
Megan Elissa Dibbern, MD  
James Edward DiCarlo, MD  
Gregory Michael Dickinson, MD  
Lanny DiFranza, MD  
Esra Dikoglu, MD  
John Effat Bacilius Diks, MD  
Preethi Dileep Menon, MD  
Yiannis Petros Dimopoulos, MD  
Matthew Dinehart, MD  
Chien-Kuang Cornelia Ding, MD  
Daniel Yuxuan Ding, Liang Ding, MD  
Yanna Ding, MD  
April-Elizabeth D Dodier, DO  
Darin G Dolezal, MD  
Liam Donnelly, MD  
Peter Roman Dromparis, MD  
Dereen Mosleh Duhoki, MD  
Juanita Duran Rincon, MD  
Shuyu E, MD  
Julie Anne Eclov, MD  
Farah El-Sharkawy Navarro, MD  
Brent A Enniss, DO  
Nurmukambad Ermatov, MD  
Kathryn Lynne Eschbacher, MD  
Gertruda Evaristo, MD  
Sedef Everest, MD  
MennatAllah Mohamed Ali Ewais, MD  
Frederick Eyerer, MD  
Nibras Lutfi Fakhri, MD  
Rachel Elizabeth Fanaroff, MD  
Jiayun Margarite Fang, MD  
Elena Margaret Fenu, MD  
Jasmine Figueroa Diaz, MD  
Olawunmi Shakirat Folarin, MD  
Maryam Foroughi, MD  
Lisandro Roberto Fortuny, MD  
Caylea Jane Foster, MD  
Tanner Freeman, MD  
Alvaro Frometa, MD  
Lucy Fu, MD  
Lanisha Denise Fuller, MD  
Mohamad Mazen Gafeer, MD  
David Gajzer, MD  
Jonathan Paul Galassi, MD  
Ashley Clare Gamayo, MD  
Linlin Gao, MD  
Wilfredo F Garcia Beltran, MD  
Kara L Gawelek, MD  
Ian Arthur Gelarden, MD  
Sharon Koorse Germans, MD  
Hassan Abdul Ghani, MD  
Fatemeh Ghazanfari Amlashi, MD  
I-sanna Rochelle Gibbons-Fideler, MD

Cynthia N Giraldo, MD  
Christopher Bernard Girardo, DO  
Lorenzo Gitto, MD  
Casey Alan Gleue, MD  
Lianna Heidi Goetz, MD  
Joshua Goldsmith, DO  
Mariangela Gomez, MD  
Roman Gonta, MD  
Eric Asay Goold, MD  
Mikhail Gorbounov, MD  
Matthew David Gosse, MD  
Brittney S Graham, DO  
Curtis Alan Gravenmier, MD  
Cory Matthew Gray, DO  
Mary Etosha Green, MD  
Timothy Joel Greenwell, MD  
Sean Gu, MD  
Cristo Jose Guardado Salazar, MD  
Jack P Guccione, MD  
Jessica Marie Gulliver, MD  
Ekin Guney, MD  
Akriti Gupta, MD  
Srishti Gupta, MD  
Efrain Alberto Gutierrez-Lanz, MD  
Yaileen Guzman-Arocho, MD  
Rouba Hadi, MD  
Omeed Hafez, MD  
Tyler Dewitt Haffler, MD  
Tahmineh Haidary, MD  
Saadia Haleema, MD  
Katie Cecilia Hall, MD  
Justin Halls, MD  
Eitan H Halper-Stromberg, MD  
Tracy Stein Halvorson, MD  
Robert Bruce Hamilton-Seth, MD  
Erik Lars Handberg, MD  
Zainab Harb, MD  
Brent Harbaugh, MD  
Ramon Hartage, MD  
Nicole Harvilla, MD  
Mohamed Elsaid Abdelfattah Hassan, MD  
Nathaniel Havens, DO  
Courtney Erin Healy, DO  
Alex Heimbigner, MD  
Anna Heimes Dillon, MD  
Steven Joseph Hemberger, DO  
Emma Ashley Henrie, MD  
Amanda Jo Hersh, DO  
Alyssa Higgins, DO  
Caroline Hilburn, MD  
Issa Hindi, MD  
Jamie Hittman, MD  
Imran Lawend Hitto, MD  
Linh Thi Ho, MD  
Derek Lee Hoerres, MD  
Jeffrey Walter Hofmann, MD  
Leilani A Holbrook, MD  
Rachel Kay Horton, DO  
Wei-Chun Hsu, MD  
Kun Hu, MD

Xiaobang Hu, MD  
Wei Huang, MD  
Yuan Huang, MD  
Andrew Everett Oliver Hughes, MD  
Bailey Hutchison, MD  
Oleksii Iakymenko, MD  
Khaldia Abdullahi Ibrahim, MD  
Wael Ibrahim, MD  
Kenji Ikemura, MD  
Brittney A Imblum, MD  
Arati Inamdar, MD  
Fatima Iqbal, MD  
Haaris Iqbal, DO  
Natasha Iranzad, MD  
Trent Levi Irwin, MD  
Alexandra Leigh Isaacson, MD  
Bogdan Isaila, MD  
Sadeq KM Islam, MD  
Anna-Karoline Israel, MD  
Jeremy Warner Jacobs, MD  
Nupur Chandrasen Jadhav, MD  
Tyler P Jankowski, DO  
Afreen Jasim, MD  
Iny Jhun, MD  
Kimberly Margaret Johnson, MD  
Nicole Katherine Johnson, DO  
Travis Hampton Johnson, DO  
Anja Milan Kiowa Jones, MD  
David Maliakkal Joseph, MD  
David Jou, MD  
Yujung Jung, MD  
Megan E Kachur, MD  
Ayaz Ghouse Kalsekar, MD  
Eun Young Kang, MD  
Ammar Karo, MD  
Israel Samwel Kasago, MD  
Abiye Tesfaye Kassa, MD  
Nidhi Kataria, MD  
Levon Katsakhyan, MD  
Temma Janie Kaufman, MD  
Gagandeep Kaur, MD  
Alae Zenab Kawam, DO  
Justin Tyler Kelley, MD  
Christopher Kerantzas, MD  
Dena Khaef Panah, MD  
Mir Yousufuddin Ali Khan, MD  
Nazia Khatoon, MD  
Maha Khedr, MD  
Pooria Khoshnoodi, MD  
Nigar Anjuman Khurram, MD  
Do Hwan Kim, MD  
Moon joo Kim, MD  
Teresa Hyunjin Kim, MD  
Jason William Kissell, DO  
Amanda Joy Kornfield, MD  
Nicolas Alexander Kostelecky, MD  
Aisha Kousar, MD  
Joseph A Krenzer, DO  
Lauren Ashley Kroll-Wheeler, MD  
Kevin Chen Hsuan Kuan, MD

Jeffrey Kubiak, MD  
Sandeep Kumar, MD  
Ashish Kurundkar, MD  
James Kwon, MD  
Hansini Laharwani, MD  
Hansen Lam, MD  
Joel Ma Lanceta, MD  
Jane Soohyun Lee, MD  
Jim ChunHao Lee, MD  
Jason Nathaniel LeGrand, MD  
Mariah Leivo, MD  
Volha Lenskaya, MD  
Nichole Landry LePage, MD  
Iana Vladimirovna Lesnikova, MD  
Denisse Leza Rincon, MD  
Hua Li, MD  
Hui-Hua Li, MD  
Luna Li, MD  
Philippa Li, MD  
Rongying Li, MD  
Yan Li, MD  
Tom Zhe Liang, MD  
Samia Liaquat, MD  
Huafang Lin, MD  
Leo Lin, MD  
Hao Liu, MD  
Natalia HG Liu, MD  
Shuo Shawn Liu, MD  
Yaobin Liu, MD  
Yi Ariel Liu, MD  
Riley Hideo Lochner, MD  
Justin Matthew Lohmann, DO  
Liang Lu, MD  
Calixto-Hope G Lucas Jr, MD  
Shu Kwun Lui, MD  
Andrew Ly, MD  
Jane T Ly, MD  
Priscilla Ruth Powell Lyon, DO  
Brian Ma, MD  
Sepideh Madahian, MD  
Sindha Thomas Madhav, MD  
Lily Mahapatra, MD  
Bhunesh Maheshwari, MD  
Brenda Mai, MD  
Heather Lynn Maioli, MD  
Manuel Maldonado-Vital, MD  
James Patrick Malleis, MD  
Jake John Mandziuk, MD  
Kiran Gujrati Manjee, MD  
Padmini A Manrai, MD  
Akila Mansour, MD  
Chih-Ping Mao, MD  
Anthony J Marchand, MD  
John Emmanuel Markantonis, DO  
Dana E Martin, MD  
Harrison D Martin, MD  
Daniel Martinez Coconubo, MD  
Jirong Bai Mass, MD  
Nana Priscilla Matsumoto, DO  
Samantha Nieves Mattox, DO  
Brandon Maveal, MD  
Romana Mayer, MD  
Isaac E McCool, MD  
Matthew McCord, MD  
Michelle Marie McDonald, DO  
Paul McGowan, DO  
Nathaniel J McLaughlin, MD

Michael R Meade, MD  
Eduardo Javier Medina Parrilla, MD  
Alice Elizabeth Meiss, MD  
Haider A Mejbil, MD  
Raima Adeel Memon, MD  
Nicole Mendelson, MD  
Juliann Michelle Mendes, DO  
Charles E Middleton IV, MD  
Caroline Anna Miller, MD  
Paul Miller, MD  
Stanton Yale Miller, MD  
Timothy Isaac Miller, MD  
Nicholas S Milligan, MD  
Andres Eduardo Mindiola Romero, MD  
Phillip Mingola, MD  
Joseph Mininni, MD  
Homan Miraliakbari, MD  
Rhonda Michelle Mittenzwei, MD  
Jeremy Miyouchi, MD  
Naheed Moghal, MD  
Ibraheem Javeed Mohammed, MD  
Chace Moleta, MD  
Jinesa Moodley, MD  
Sara Moradi, MD  
Angelica Moran, MD  
Jennifer Moreira-Dinzey, MD  
Katherine Morgan, MD  
Casey E Morrison, MD  
Tiffany Morrison, MD  
Sayedamin Mostofizadeh, MD  
Maria Mostyka, MD  
Samaneh Alizadeh Motanagh, MD  
Masoud Movassaghi, MD  
Patrick Connor Mullane, MD  
Caroline I Mullins Underwood, MD  
Anamaria Munteanu, MD  
Tawfeq Naal, MD  
Hibbah Nabeel, MD  
Urooba Nadeem, MD  
Karen Amelia Nahmod, MD  
Jamie Shinobu Nakagiri, MD  
Hirotomo Nakahara, MD  
Suguna Prativadi Narayan, MD  
Damodaran Narayanan, MD  
Janira Marita Navarro Sanchez, MD  
Neil M Neumann, MD  
Jessica Nguyen, MD  
Clark Tolson Nichols, MD  
Caitlin M Nickens, MD  
Kaitlyn Joy Nielson, MD  
Priyatharsini Nirmalanantham, MD  
Rashda Norui, MD  
Denis Chamberlain Noubouossie Fondjie, MD  
Sonia K Oad, MD  
Fernando Alekos Ocampo Gonzalez, MD  
Daniel Ogden, MD  
Kenechukwu Chinedum Nneka Ojukwu, MD  
Oluwaseyi Olayinka, MD  
Eric Peter Ollila, MD  
Chukwuemeka Oriala, MD  
Domenika Alejandra Ortiz Requena, MD  
Mazen Magdy Khalil Osman, MD  
Ekin Ozluk, MD  
Michael Pagacz, MD  
Sylvia Papp, MD  
Byoung Uk Park, MD  
Matthew Lee Parke, DO

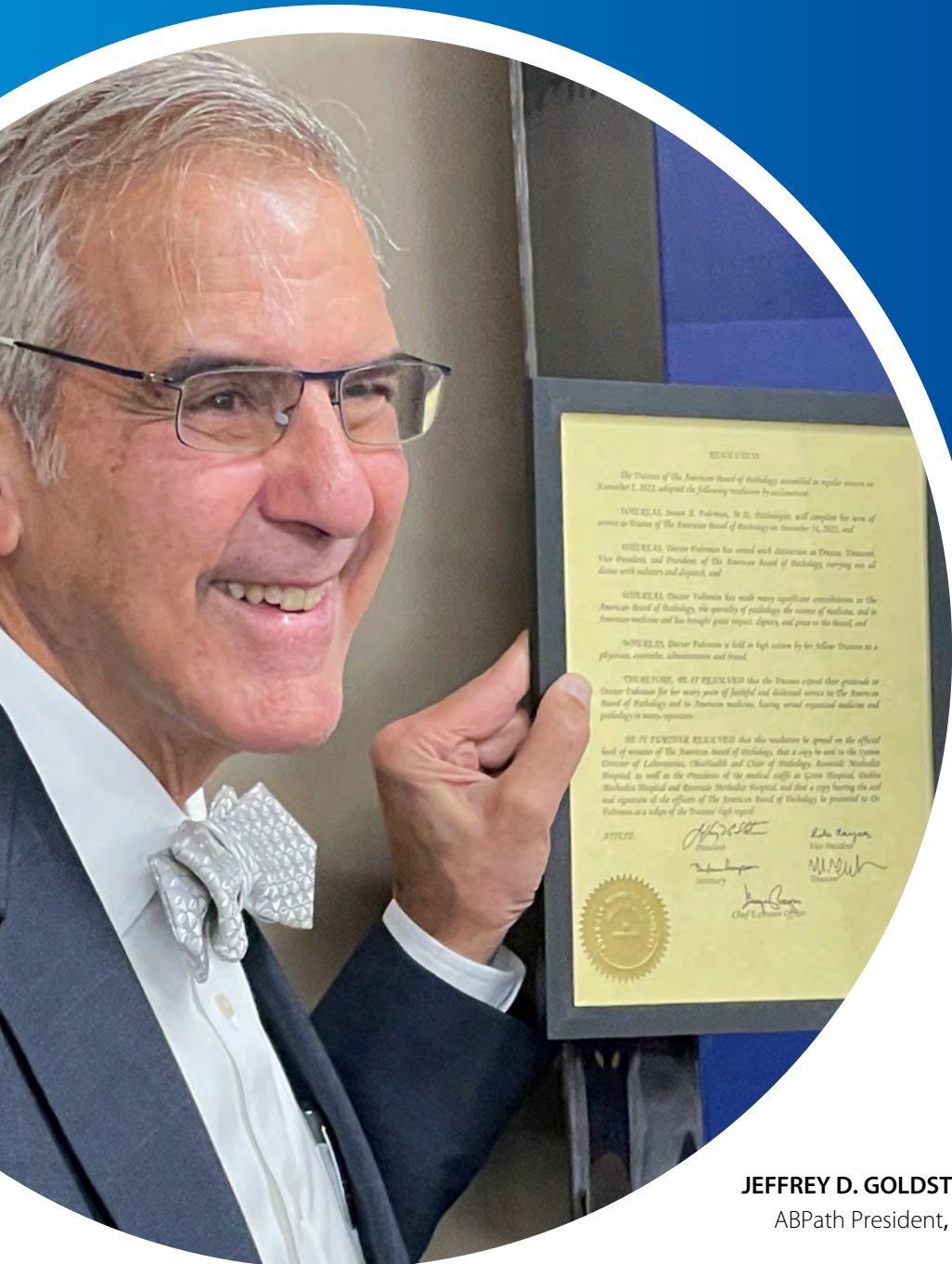
Viharkumar Patel, MD  
Michael Pepper, MD  
Catherine Elizabeth Perez, MD  
William Robert Perry, MD  
Josiah David Peske, MD  
Robert Philip Post, DO  
Dimitra Pouli, MD  
Vipulkumar Pravinbhai Prajapati, MD  
Anne E Prater, DO  
Annaliisa Rose Pratt, MD  
Robert Jon Propst, DO  
Elisabet Pujadas, MD  
Tatsiana Pukhalskaya, MD  
David Puyraimond Zemmour, MD  
Tareq Z S Qdaisat, MD  
Syed Quadri, MD  
Ziba Rahbar, MD  
Mahdi Rahimi, MD  
Bharat Ramlal, MD  
Emilio Ramos, MD  
Sulakshana Ranjan Shivakumar, MD  
Maryam Fatima Raouf, MD  
Dmitry Ratner, MD  
Andrew J Rech, MD  
Jordan Redemann, MD  
He Zhen Ren, MD  
Joyce Ren, MD  
Ryland Lenz Richards, MD  
Jesus Omar Rico Castillo, MD  
Maria Del Mar Rivera Rolon, MD  
Marcela Riveros Angel, MD  
Natalie M Rizzo, MD  
Jessica L Robertson-Patera, MD  
Shannon Rodgers, DO  
Raul V Rodriguez-Munoz, MD  
Joseph Mark Rohr, MD  
Rebecca Rojansky, MD  
Hannah R Rose, DO  
Simon Fortin Roy, MD  
Krasimira Aleksandrova Rozenova, MD  
Zachary S Rubin, MD  
Ashlie Rubrecht, MD  
Mark Allen Russell, MD  
Hana Marie Russo, MD  
Emily Elizabeth Ryan, MD  
Mina Sabet, MD  
Qandeel Sadiq, MD  
Mohammed Abdulgader Sait, MD  
Dongpo M Salas, MD  
Jasmine Saleh, MD  
Hina Samad, MD  
Fnu Sameeta, MD  
Alireza Samiei, MD  
Michelly Kerly Sampaio de Melo, MD  
Annie Samraj, MD  
Ariel Darrah Sandhu, MD  
Carla Saoud, MD  
Ryan Lee Sappenfield, MD  
Iman Sarami, MD  
Harley Schainost, MD  
Suzanne Marie Schauwecker, MD  
Jason Paul Schultz, MD  
Steven Schwartz, MD  
Mary Kate Schwerdt, MD  
Andrew Porter Seiwel, MD  
Bhaumik A Shah, MD  
Rafiq Shahid, MD

Daniel Benjamin Shapiro, MD  
Matthew Scott Shapiro, MD  
Anurag Sharma, MD  
Nupur Sharma, MD  
Conrad William Shebelut, MD  
Pari Shelat, MD  
Jesse Sheldon, DO  
Yuan Shen, MD  
Riddhish Sheth, MD  
Jonathan Shih, MD  
Oyewale O Shiyabola, MD  
Konstantinos Sidiropoulos, MD  
Stephanie Siegmund, MD  
William David Sinclair, MD  
Amrit Pal Singh, MD  
Jason Singh, MD  
Natasha Singh, MD  
Sam Sirotnikov, DO  
Alexander Patrick Smith, MD  
Heather Lynne Smith, MD  
Lynelle Paula Smith, MD  
Michelle Smith, MD  
Shane D Smith, MD  
Vanessa Louise Smith, MD  
Oraine Damian Snaith, MD  
Linda Song, MD  
Amber E Souers, MD  
Theresa Spivey, MD  
Merry Spradling, DO  
Pooja Srivastava, MD  
Vanessa Anne States, MD  
Daniel Stefanko, MD  
Jordan Michael Steinberg, MD  
Brent Claxon Sterling, MD  
Sara Lynn Stone, MD  
Lukas Streich, MD  
Jeffrey Alexander Stump, MD  
Shamima Sultana, MD  
Daniel D Summerfield, MD  
Erica Ann Swenson, DO

Michael T Swete, DO  
Elisabeth Tabb, MD  
Kotaro Takeda, MD  
Alana Miyori Taniguchi, MD  
Jana Tarabay, MD  
Natalie E Taylor, MD  
Troy Tenney, DO  
Merryl J Terry, MD  
Ryan Andrew Thomas, MD  
Sofia Liou Thorne, MD  
Gustavo Adolfo Torres, MD  
Truc Thien Tran, MD  
Tuyet Hong T Tran, DO  
Jonathan M Tsai, MD  
Jack Tung, MD  
Veronica Ulici, MD  
Asad Ullah, MD  
Mariana Usatii, MD  
Jamar P Uzzell, MD  
Jacob Valk, MD  
Jason R Van Roo, MD  
Kaitlin Alexandra Vanderbeck, MD  
Alejandro M Vargas, MD  
Jennifer Lynn Vazzano, DO  
Miriam Ariana Velazquez, DO  
Anjanaa Vijayanarayanan, MD  
Duc Vo, MD  
Theodore Vougiouklakis, MD  
Gary Wang, MD  
Lucy S Wang, DO  
Xintong Wang, MD  
Yan Wang, MD  
Yaohong Wang, MD  
Zijian Wang, MD  
Sintawat Wangsiricharoen, MD  
Kaitlin Diane Weaver, DO  
Shaun Webb, DO  
Qing Wei, MD  
Maxwell Weidmann, MD  
Natasha Elise Weiser, MD

Daniel Allen Welder, MD  
Xiaoyun Wen, MD  
Jenny Linda Weon, MD  
Vitor Werneck Krauss Silva, MD  
Clinton Stuart Westover, MD  
Deland J Weyrauch, MD  
Rebekah Wieland, MD  
Jonathan Wilcock, DO  
Ashley Windham, DO  
Danica Wiredja, MD  
Antoine Dominique Wrice, MD  
Sarah Jiayi Wu, MD  
Timothy Robert Wysozan, MD  
Yu Yang, MD  
Sayeeda Yasmeen, MD  
Neeraja Yerrapotu, MD  
Rebecca Yoda, MD  
Amy Guimaraes Young, MD  
Bahaaeldin Youssef, MD  
Kate Yu, MD  
Zhimin Yuan, MD  
Paul Leon Zamiara, MD  
Mark Alan Zaydman, MD  
Fernando Zazueta Leon-Quintero, MD  
Bradley Zehr, MD  
Jingjing Zhang, MD  
Junlin Zhang, MD  
Qihong Zhang, MD  
Ruonan Zhang, MD  
Tao Zhang, MD  
Yujie Zhang, MD  
Zhen Zhao, MD  
Hanqiao Zheng, MD  
Lan Zheng, MD  
Leon Zheng, MD  
Ruifang Zheng, MD  
Yonah Ziemba, MD  
Megan Zilla, MD  
Tatyana Zinger, DO  
Yang Zong, MD  
Patricija Zot, MD





**JEFFREY D. GOLDSTEIN, MD**  
ABPath President, 2022

## AMERICAN BOARD OF PATHOLOGY

4830 W. Kennedy Blvd.  
Suite 690  
Tampa, FL 33609  
(813) 286-2444  
FAX: 813-289-5279  
[www.abpath.org](http://www.abpath.org)

Gary W. Procop, MD, MS  
Chief Executive Officer

Ty McCarthy  
Chief Operating Officer  
[coo@abpath.org](mailto:coo@abpath.org)

Primary Certification  
[mary@abpath.org](mailto:mary@abpath.org)

Subspecialty Certification  
[renee@abpath.org](mailto:renee@abpath.org)

Continuing Certification  
[john@abpath.org](mailto:john@abpath.org)

ABPath CertLink®  
[abpath@mycertlink.org](mailto:abpath@mycertlink.org)

General Inquiries  
[questions@abpath.org](mailto:questions@abpath.org)

Follow the American Board of Pathology (ABPath) on LinkedIn,  
Facebook, Twitter and Instagram