



Volume 45 No. 2

Winter 2023

The **AB**Path EXAMINER

The mission of the American Board of Pathology, a member of the American Board of Medical Specialties, is to serve the public and advance the profession of pathology by setting certification standards and promoting lifelong competency of pathologists.



Follow Us on Social Media

Visit our Web site www.abpath.org

Cover created by DALL-E 3



IN THIS ISSUE



About the Cover
We prompted ChatGPT's DALL-E 3 to create an image in a baroque style reminiscent of Rembrandt, featuring a group of young pathologists with diverse backgrounds celebrating the Holidays. The scene includes a microscope, adding a touch of their professional environment to the festive setting.

- LETTER FROM THE CEO, Gary Procop, MD, MS 30
- 2024 AMERICAN BOARD OF PATHOLOGY OFFICERS AND TRUSTEES 31
- MEET OUR NEW TRUSTEE 32
- TRUSTEES IN THE NEWS 33
- MEET OUR STAFF 34
 - Clarita Scioscia 34
- BOARD ACTIONS 35
 - Approval of Trustee Speakers Bureau..... 35
- ABPATH NEWS..... 35
 - ABPath CertLink CME for 2024 35
 - Exam Application Process Streamlined by Eliminating Late Deadlines and Fees 36
 - Improvement in Medical Practice (IMP) Name Change 37
 - 2022 Annual Report..... 37
 - Launch of the New ABPath.org Website 37
- THANK YOU TO COOPERATING SOCIETIES 38
- OUR VOLUNTEERS 39
 - 2023 Test Development and Advisory Committees 39
 - Continuing Certification (CC) Advisory Committee 39
 - Resident and Fellow Advisory Committee..... 39
 - ABPCL Item Writers 39
- CONTINUING CERTIFICATION PROGRAM (CC) 40
 - New Diplomates 40
 - CC Program Reminders..... 40
 - CC and ABPCL FAQs..... 41
- PROGRAM DIRECTORS AND COORDINATORS 42
 - Primary Exam Applications 42
 - Program Performance Reports 42
 - ABPath Booklet of Information 42
 - Resident Orientation Presentation 42
- ABMS NEWS..... 43
 - Health Care Administration, Leadership, and Management as a Subspecialty..... 43
- EXAMINATION PERFORMANCE 44
- EXAMINATION DATES FOR 2024..... 47
- ABOUT THE COVER 48
- CONTACT ABPATH 49





Gary Procop, MD, MS, MEd
Chief Executive Officer

LETTER FROM THE CEO: *Two Years Before the Mast*

Greetings Diplomates and Colleagues,

It is hard to believe that I have been the CEO of the American Board of Pathology for two years, and what a two-year period this has been. The first year of any new position is largely dedicated to learning the ropes, keeping the ship afloat, and avoiding icebergs. I am pleased that those tasks have all been accomplished. Although I had served as a Trustee of the Board for twelve years, there was still much to learn about the details of all that goes into our primary and subspecialty certification development, publishing, and review, as well as our continuing certification initiatives.

I could not be more proud of all that I learned. The first and most important component of our rigorous and standardized process is, of course, the people. There is a substantial community of internationally renowned content experts who work

writing test items, reviewing item statistics, and providing updates regarding nomenclature, practice guidelines, and standards. These experts, the members of our Test Development and Advisory Committees, provide the content expertise that assures content relevancy and contributes significantly to the validity of our certification exams. These individuals are all volunteers, and we cannot thank them enough for their service. This group is complemented by the numerous volunteer item writers who contribute subspecialty, practice-relevant items for inclusion in the ABPath CertLink® component of our Continuing Certification Program. The volunteers of our Resident and Fellow Advisory Committee and the Continuing Certification (CC) Advisory Committee are appreciated for giving their time and providing voices from the trenches to guide the Board in ways to decrease the burden and increase the relevancy of our CC program.

Please take a moment to review the members of the Board of Trustees on our website. This diverse group of well-recognized individuals, who reflect both subspecialists and private practitioners in our community as well as a public member, oversee and guide the Board in current and future endeavors. I am thankful for the substantial time and expertise given by these volunteers in guiding our Board. I will continue my giving of thanks for all the members of the ABPath Staff, who behind the scenes, undertake the amazing amount of work to both regularly produce our highly reliable certification examinations and the Continuing Certification Program, as well as working on our several forward-looking initiatives.

The heading of this note is taken from the American classic of the same name by Richard Henry Dana, Jr. This important contribution to American literature is recommended to those interested in a historic seafaring adventure. Just as Mr. Dana went on to live an important and impactful life after this two-year adventure, so ABPath moves forward defining, with our community, the content important for certification and investigating the future of competency-based assessment in certification. More to come on these initiatives, just over the horizon.

Gary W. Procop, MD, MS, MEd
CEO, American Board of Pathology



2024 AMERICAN BOARD OF PATHOLOGY OFFICERS AND TRUSTEES

The American Board of Pathology (ABPath) is pleased to announce the ABPath Board of Trustees and Executive Committee for 2024.



Pictured from left to right: front row—Jennifer Laudadio, MD; Ritu Nayar, MD; Mark K. Fung, MD, PhD; Barbara A. Sampson, MD, PhD; Mohiedean Ghofrani, MD, MBA; Kathleen G. Beavis, MD; Julie D. Kingery, MD. Back row—James R. Cook, MD, PhD; Eric F. Glassy, MD; Jeffrey D. Goldstein, MD; Matthew J. Wasco, MD; Edward R. Ashwood, MD; ABPath CEO Gary W. Procop, MD, MS, MEd; Javarro Russell, PhD.

President.....Barbara A. Sampson, MD, PhD, New York, NY
Vice President.....Mohiedean Ghofrani, MD, MBA, Vancouver, WA
Secretary.....Kathleen G. Beavis, MD, Chicago, IL
TreasurerMark K. Fung, MD, PhD, Burlington, VT
Immediate Past President..... Ritu Nayar, MD, Chicago, IL

Congratulations to the Trustees who were re-elected to additional terms:

- Mark K. Fung, MD, PhD 2nd term
- Matthew J. Wasco, MD 2nd term

In addition to the officers, Trustees of the American Board of Pathology:

- Edward R. Ashwood, MD, Aurora, CO
- James R. Cook, MD, PhD, Cleveland, OH
- Eric F. Glassy, MD, Rancho Dominguez, CA
- Jeffrey D. Goldstein, MD, Los Angeles, CA
- Julie D. Kingery, MD, Gainesville, FL
- Jennifer Laudadio, MD, Little Rock, AR
- Javarro Russell, PhD, Richmond, VA
- Matthew J. Wasco, MD, Ann Arbor, MI

Thank you to Trustee Constance M. Filling, EdD. This is the last year of her term on the Board. Dr. Filling was our first public member and her many years of sharing her time and expertise have greatly impacted the evolution of board certification in pathology.



Constance M. Filling, EdD

MEET OUR NEW TRUSTEE



Javarro Russell, PhD

We are pleased to welcome Javarro Russell, PhD as the new public member to the Board of Trustees with a term beginning on January 1, 2024. Dr. Russell brings a wealth of experience in exam development and administration, making him a valuable addition to the Board.

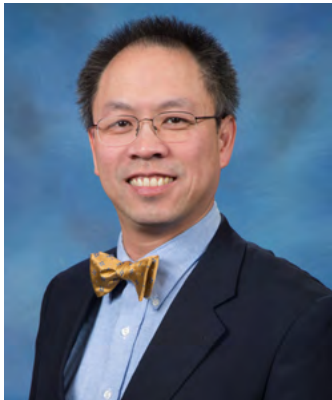
Dr. Russell currently serves as the Senior Director for the Admissions Testing Service at the Association of American Medical Colleges (AAMC). In this distinguished role, he oversees the strategic direction of all aspects of the Medical College Admission Test (MCAT) and MCAT Prep portfolio. These areas include business operations, research & development, test security, communications, and derivative products. The MCAT testing program is instrumental in supporting the admissions process at over 150 medical schools and more than 80 thousand examinees annually.

Prior to his tenure at the AAMC, Dr. Russell has served in leadership roles at the National Board of Medical Examiners and the Educational Testing Service. His service to these organizations focused on measurement and assessment design issues in higher education, as well as business development. He has also assisted institutions in identifying solutions for assessing and measuring student learning outcomes, such as content knowledge, critical thinking and collaborative problem-solving.

He holds two degrees from Norfolk State University, a Historically Black College and University. His PhD in Assessment and Measurement is from James Madison University.

The ABPath's Board of Trustees is made up of 12 board-certified pathologist members and one public member. The public member is a non-physician member who will advocate for community and public interests, and provide a public perspective for discussion of issues and decisions made by the Board of Trustees. Each member is highly esteemed and accomplished in their respective fields and/or subspecialty.

TRUSTEES IN THE NEWS



Mark K. Fung, MD, PhD was recently awarded the 2023 College of American Pathologists (CAP) Lifetime Achievement Award at the CAP Annual Meeting in Chicago. He was recognized for his contributions to patient care and years of service on the Histocompatibility-Identity Testing Committee.



Ritu Nayar, MD has been appointed to the CAP Board of Governors and was inducted at the CAP Annual Meeting in Chicago. Dr. Nayar is pictured here with CAP President Donald S. Karcher, MD.



Mohiedean Ghofrani, MD, MBA was elected to Epic's Pathology Steering Board. Dr. Ghofrani will work with the committee on direction setting, defining workflows and content best practices, providing feedback on specialty roadmaps, and contributing to the specialist community.



Steven Swerdlow, MD; Susan Fuhrman, MD; and Karen Kaul, MD, PhD were honored as Life Trustees of ABPath for their many years of dedicated service and contributions to the Board. They were awarded their Life Trustee certificates by Dr. Ritu Nayar, President, at the Summer 2023 Board of Trustees meeting. We thank them for their many years of dedicated service. <https://abpath.org/2023/08/fuhrman-kaul-swerdlow-life-trustees/>

MEET OUR STAFF



Clarita Scioscia TDAC Coordinator

It is with gratitude and warm wishes that we announce the retirement of Clarita Scioscia, ABPath TDAC Coordinator, after an exceptional 37-year tenure with the Board. Clarita began with the Board in 1986 and has served as the coordinator for twelve ABPath Test Development and Advisory Committees (TDACs). ABPath TDACs are made up of volunteer pathologists who write and review certification examination questions in their area of expertise. As the TDAC coordinator, Clarita successfully organized all aspects of the meetings and the resulting critical content.

Following her retirement, Clarita plans to spend more time on her paintings and gardening. Clarita is a very talented oil painter and her work is often shown in the Tampa Bay area. We wish her the best in her retirement!

ABPath Trustees and staff celebrated her many years of service at the recent Board of Trustees meeting in Tampa.



Clarita Scioscia and Ritu Nayar, MD



Clarita Scioscia and the ABPath Trustees

BOARD ACTIONS

Approval of Trustee Speakers Bureau

After a very successful pilot phase, the Trustees recently approved the implementation of the Trustee Speakers Bureau at the Fall Board of Trustees meeting. The program was developed to directly engage with pathology training programs. ABPath Trustees will visit the program either in person or virtually to provide an overview of the Board, updates on Board initiatives, and answer questions about board certification. Each program will be visited once every four years in an effort to connect with each post-graduate year before the residents complete training. Programs will be contacted by the Board to schedule presentations.



*Top to bottom:
Barbara Sampson, MD; Icahn School of Medicine at Mount Sinai
Jeff Goldstein, MD; UCLA David Geffen School of Medicine
Eric Glassy, MD; Los Angeles County-Harbor-UCLA Med Center*

ABPATH NEWS

ABPath CertLink CME for 2024

ABPath has announced an important change in the Continuing Medical Education (CME) credits that can be claimed for participating in ABPath CertLink. Starting in 2024, diplomates participating in ABPath CertLink will be eligible for 1 CME credit per quarter. This modification is due to the reduction in the number of CertLink questions assigned per quarter, implemented in 2023 as part of the [ABPCL Quality Assurance/Quality Improvement Initiative](#) and aimed at enhancing the overall program experience.



1 CME credit per quarter in 2024

CME credit for participation in ABPCL during 2023 will continue to be honored at 1.25 CME credits per quarter. Participants from 2023 can claim these credits in February 2024 through the American Society for Clinical Pathology (ASCP).

Exam Application Process Streamlined by Eliminating Late Deadlines and Fees

The American Board of Pathology (ABPath) is pleased to announce a significant change to its certification examination application and registration process.

Effective immediately for the 2024 exam season, ABPath will no longer offer a late application/registration deadline or assess a late fee for Primary and Subspecialty certification exams.

Historically, ABPath has offered applicants a late application deadline, accompanied by a late fee, in addition to the original deadline. However, moving forward, we will honor only ***one application deadline per exam***, with the intention of expediting the application approval process for physicians seeking board certification in pathology.

The application/registration deadlines for the upcoming certification exams are as follows:

Spring 2024 Primary Exam Application Deadline

January 15 at 11:59 pm EST

Fall 2024 Primary Exam Application Deadline

May 15 at 11:59 pm EST

Fall 2024 Primary Exam Registration Deadline

(for those with a period of board eligibility)

July 15 at 11:59 pm EST

2024 Subspecialty Exams Application/Registration Deadline

May 15 at 11:59 pm EST

DON'T MISS THE DEADLINE!





Improvement in Medical Practice (IMP) will now be Improvement in Health and Healthcare (IHHC)

Part IV activities entitled “Improvement in Medical Practice” (IMP) will now be known as “Improvement in Health and Healthcare” (IHHC). The name change will be effective January 1, 2024, and reflects the ABMS [Standards for Continuing Certification](#) that promote the design of integrated, specialty-specific programs by Member Boards to support an individual physician’s (diplomate’s) continuing professional development.



2022 Annual Report PDF

<https://shrtm.nu/okl>

2022 Annual Report

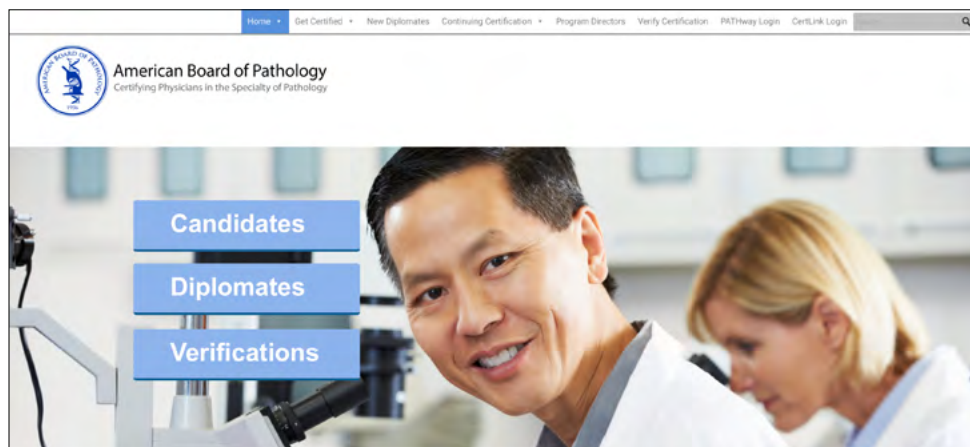
In July 2023, ABPath released the [2022 Annual Report](#). The report includes Board highlights from 2022 as well as a listing of the newest diplomates that were certified in 2022.

Launch of the New ABPath.org Website

In July 2023, ABPath launched the all-new abpath.org website, the dedicated source for comprehensive information on board certification in pathology.

The primary goal during the development of this site has been to enhance user-friendliness, providing a seamless experience for pathology residents/fellows preparing for board certification exams and board-certified pathologists participating in the Continuing Certification Program. With a modern design and intuitive navigation, we aim to improve our visitors’ interaction with the site.

Be sure to check it out!



THANK YOU TO COOPERATING SOCIETIES

LIST OF SOCIETIES

- Academy of Clinical Laboratory Physicians and Scientists
- American Association of Neuropathologists
- American Medical Association Pathology Section Council
- American Society for Clinical Pathology
- American Society of Dermatopathology
- American Society for Investigative Pathology
- American Society of Cytopathology
- Association for the Advancement of Blood and Biotherapies
- Association for Molecular Pathology
- Association of Directors of Anatomic and Surgical Pathology
- Association of Pathology Chairs
- College of American Pathologists
- National Association of Medical Examiners
- Society for Hematopathology
- Society for Pediatric Pathology
- United States and Canadian Academy of Pathology

Our Cooperating Societies

There are sixteen Cooperating Societies that ABPath collaborates with to identify and address issues of importance to the profession of pathology. Through these valuable relationships, our Cooperating Societies support diplomates in their life-long learning and improvement in practice, their participation in Continuing Certification, and documenting their participation in educational and quality assessment activities.

The ABPath would like to especially thank the APC/PRODS, ASCP, CAP, and USCAP for their support of ABPath exhibit booths at their annual meetings. Be sure to visit us at the next meeting!





OUR VOLUNTEERS

Volunteers for the ABPath contribute their time and expertise in support of our mission and promote excellence in the practice of pathology. We thank them for their selfless dedication. View a complete list of current ABPath committee members.



2023 Test Development and Advisory Committees

The TDACs are responsible for developing and reviewing the ABPath certification exam questions that assess a physician's knowledge, judgment, and skills to provide high-quality care to patients. Each committee is chaired by an ABPath Trustee and consists of recognized subject matter experts who are leaders in their field. They spend many hours throughout the year in service to our profession and certification programs.



Continuing Certification (CC) Advisory Committee

The CC Advisory Committee is made up of 13 volunteer diplomates with diverse backgrounds, specialties, and experience and is chaired by an ABPath Trustee, currently Dr. Eric Glassy. It is responsible for advising the ABPath Board of Trustees for continuous evaluation and improvement of Continuing Certification from a diplomate's perspective. Each member serves for three years on the Committee.



Resident and Fellow Advisory Committee

The Committee is made up of eight pathology residents and fellows to provide feedback and suggestions for improvement to ABPath about the board certification process and ways to best support pathology residents and fellows in the certification journey. The committee is chaired by ABPath CEO Dr. Gary W. Procop.



ABPCL Item Writers

The ABPCL Item Writers share their expertise by writing questions (items) for the ABPath CertLink® longitudinal assessment. Their contributions have helped to enrich and refine the program. We thank them for all they do to support professional development in pathology. If you are a board-certified pathologist and would like to find out more, please email cearnest@abpath.org.

CONTINUING CERTIFICATION PROGRAM (CC)



New Diplomates

Congratulations to the new diplomates certified in 2023! Please look for an email welcoming you to the CC Program including ABPath CertLink® (ABPCL). The email will be sent to the primary email address we have on file in PATHway.

For more information about the CC Program, visit the [New Diplomates page](#) on the ABPath website.

For diplomates interested in Subspecialty certification, please check the ABPath website for [Subspecialty application dates and deadlines](#).



Continuing Certification Program Reminders

- CME for ABPCL- You may claim credits for participation in 2022 until March 31, 2024 for participation in ABPCL.
- Reporting Forms are due for those certified in odd years on December 31, 2023 . You must participate in ABPCL and complete the Reporting Form to fulfill the CC Program requirements.
- Annual fee– The CC Program fee is paid annually. Pay your annual fee of \$150 by December 31, 2023. For those certified in 2023, your first annual fee will be due in December 2024.
- If you have questions or need assistance with ABPCL, contact us at certLink@abpath.org.



Continuing Certification and ABPCL FAQs

The new ABPath website has answers to some of the most commonly asked questions about the Continuing Certification Program and ABPath CertLink®. You can find answers to these and more at [CC Program FAQs](#) and [ABPCL FAQs](#).

How Often Do I Need to Answer a Question?

You will be able to access your questions at the beginning of each quarter. You will receive an email or text (depending on the preference you have selected in your ABPCL profile) with a link to the questions. You must answer all questions by the quarter's end. You may choose the rate at which you progress through each quarter's questions. For example, you may answer one question a week, all the questions at one time, or any frequency in between.

What if I need to take a quarter off for an emergency or life event?

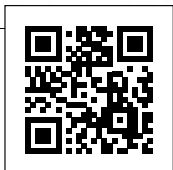
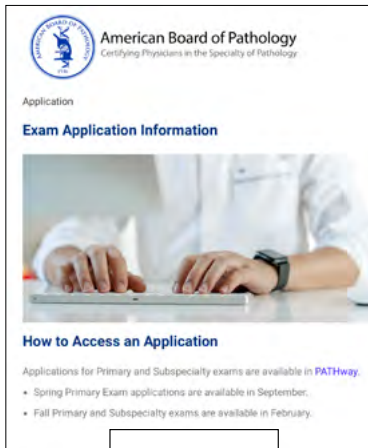
ABPCL is designed with flexibility for emergencies and life events, with board pre-approval. Diplomates may request up to two quarters off (sabbaticals – non-scored quarters) during each two-year reporting periods by creating a support ticket directly in ABPCL or emailing certlink@abpath.org. Quarters approved for sabbatical count towards the overall participation requirement; they count as participating. Questions not yet attempted in a quarter approved for sabbatical will not be marked incorrect. The current quarter may be requested for sabbatical up to two days prior to closing. Quarters cannot be retroactively requested for sabbatical.

What if I don't answer all of the questions?

Any questions left unattempted at the close of a quarter are considered forfeited, will be marked as incorrect, and will impact your ABPCL performance.



PROGRAM DIRECTORS AND COORDINATORS



<https://shrtm.nu/oKJ>

Primary Exam Applications

Applications for the Spring 2024 Primary exam are due by January 15, 2024. Residents should submit applications as early as possible. Once an application has been submitted by a resident, the Program Director (PD) must approve the application and the PD evaluation must be completed before the application can be submitted for final review/approval by the ABPath Credentials Committee. Reminder, effective immediately there is no late deadline so the applications must be complete by the January 15 deadline.

Program Performance Reports

The Program Performance Reports will be released in January 2024 for residents and fellows who took exams in 2023. The reports include summarized information from the previous seven years. Please review program performance reports and check for inaccuracies. If inaccuracies are noted, please contact mary@abpath.org immediately.

Performance Reports cannot be corrected after Feb. 28.

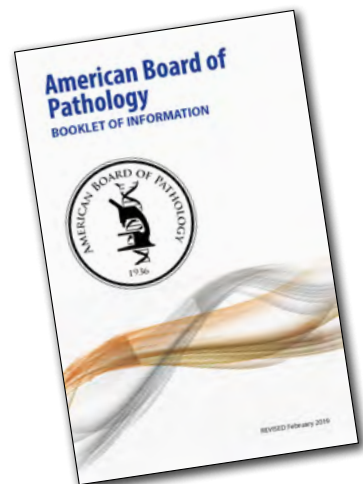
ABPath Booklet of Information

The [Booklet of information](#) is the primary source for policies, procedures, and requirements for board certification in pathology. Residents and Fellows should review the booklet each year.

Resident Orientation Presentation

ABPath created a PowerPoint presentation to provide a basic overview of board certification through ABPath. We encourage Program Directors to present it to their residents during their training. The presentation is available on YouTube and as a PowerPoint presentation. Both formats can be found on the ABPath website on the [Program Directors page](#).

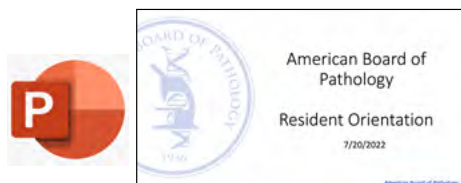
Complete certification requirement details can be found in the Booklet of Information.



Program Directors and Coordinators



Instructions/Information for Primary (AP and/or CP) Program Directors and Coordinators



Click to download the PPT file



<https://youtu.be/i2V3JAITrHE>

ABMS NEWS



American Board
of Medical Specialties
Higher standards. Better care.®

American Board of Medical Specialties Officially Recognizes Health Care Administration, Leadership, and Management as a Subspecialty

The American Board of Medical Specialties (ABMS) officially approved Health Care Administration, Leadership, and Management (HALM) as a subspecialty at its February 2023 Board of Directors meeting.

The HALM subspecialty encompasses and integrates experience from clinical medicine and health systems science, including quality improvement, patient safety, health care economics, public health, communication, informatics, and other related disciplines into a singular subspecialty certificate. Diplomates will be required to complete HALM training in an Accreditation Council for Graduate Medical Education accredited fellowship program as well as successfully pass a certification examination.

The American Board of Anesthesiology, American Board of Emergency Medicine (ABEM), American Board of Family Medicine, and American Board of Preventive Medicine co-sponsored the application for the subspecialty certificate, allowing physicians certified by 13 of the 24 ABMS Member Boards, which includes ABPath, to apply for the new certificate.

The first HALM exam is scheduled to be administered in 2024. Information regarding eligibility requirements may be found on the [ABEM website](#).



American Board of
Emergency Medicine

BECOME
CERTIFIED

STAY
CERTIFIED

FOR PROGRAM
DIRECTORS

Health Care Administration, Leadership, and Management

EXAMINATION PERFORMANCE



The ABPath uses criterion-referenced scoring for its certification examinations. Setting the criterion standard for each exam is performed every 3-5 years. The number of candidates passing the examinations may not match the number of candidates certified for several reasons:

1. Some AP/CP candidates, both first-time takers and repeaters, take only one portion (either AP or CP) of the examination. These candidates are not certified until both AP and CP are passed.
2. Certified candidates include AP/CP candidates who passed either the AP or CP examination previously and requested single certification during the reporting year.
3. Certified candidates also include candidates who passed the examinations in a previous year but did not provide documentation of licensure or other required information until the reporting year.

† Statistics have been updated to reflect the reassessment and rescoring of the 2022-2024 Primary and Subspecialty exams that was conducted in October 2024.

Primary Certification Examinations

2023 Primary Examination

	Total Candidates			First-Time Takers			Repeaters		
	#	# Pass	% Pass	#	# Pass	% Pass	#	# Pass	% Pass
AP	680	547	80%	567	500	88%	113	47	42%
CP	586	542	92%	544	520	96%	42	22	52%

5-Year Certified Report

Primary	2019	2020	2021	2022	2023
AACP	451	397	533	500	477
AP only	58	73	105	100	75
CP only	40	25	55	54	55
APNP	10	8	17	7	5

Primary Exam Pass Rates (% Pass = Spring exam pass rate)

Primary	2019 % Pass	2020 % Pass	2021 % Pass	2022 % Pass	2023 % Pass
AP only	82*	85	82	87*	84
CP only	85*	88	94	94*	94

**New criterion standard applied*

Subspecialty Certification Examinations

2023 Subspecialty Examinations

	Total Candidates			First-Time Takers			Repeaters		
	#	# Pass	% Pass	#	# Pass	% Pass	#	# Pass	% Pass
BB/TM	60	58	97	49	49	100	11	9	82
CH	-	-	-	-	-	-	-	-	-
CI*	-	-	-	-	-	-	-	-	-
CY	131	116	89	119	108	91	12	8	67
DP	50	45	90	49	44	90	1	1	100
FP	61	55	90	60	55	92	1	0	0
HP	143	134	94	134	129	96	9	5	56
MB	11	11	100	11	11	100	-	-	-
MG	62	59	95	57	55	96	5	4	80
NP	27	26	96	25	24	96	2	2	100
PP	24	21	88	20	19	95	4	2	50
FPclinMB**	-	-	-	-	-	-	-	-	-

*Clinical Informatics exam results were not released at the time of publishing.

**FPclinMB = Focus Practice Designation-Clinical Microbiology

5-Year Certified Report

Subspecialty	2019	2020	2021	2022	2023
BB/TM	47	39	39	29	58
CH	1	2	-	-	-
CI*	18	17	27	25	-
CY	137	104	109	115	117
DP	45	34	41	43	45
FP	38	47	38	53	55
HP	119	116	108	110	133
MB	14	6	18	10	11
MG	59	48	49	51	59
NP	12	17	11	16	21
PP	23	16	20	18	21
FPclinMB**	-	1	-	-	-

*Clinical Informatics exam results were not released at the time of publishing.

**FPclinMB = Focus Practice Designation-Clinical Microbiology

Subspecialty Examinations Pass Rates

Subspecialty	2019 % Pass	2020 % Pass	2021 % Pass	2022 % Pass	2023 % Pass
BB/TM	96	89*	81	62	97
CH	100	100	-	-	-
CI**	78	89	77	66	-
CY	96	86*	86	83	89
DP	98	95	87	93*	90
FP	93	89*	95	98	90*
HP	97	94*	94	90	94
MB	100	100	100	85*	100*
MG	98	98*	94	84	95*
NP	96	100	90	92*	96*
PP	96	89	91	82*	88
FPclinMB***	-	100	-	-	-

*New criterion standard applied

**Clinical Informatics exam results were not released at the time of publishing.

***FPclinMB = Focus Practice Designation-Clinical Microbiology

Continuing Certification Examinations

Continuing Certification Participation Statistics

	2019	2020	2021	2022	2023
Certificates Enrolled	1054	933	1140	1088	1266
Certificates Lapsed/ Revoked	88	64	60	46	49
Diplomates Enrolled	583	519	731	658	626
Diplomates Lapsed/ Revoked	63	52	49	33	35

EXAMINATION DATES FOR 2024

Exams (Pearson VUE)	2024 Dates
Anatomic / Clinical Pathology	
Spring	May 13 - June 8
Fall	October 7-21
Subspecialty	
Blood Banking/Transfusion Medicine	September 9-28
Chemical Pathology	September 9-28
Cytopathology	September 9-28
Dermatopathology	September 9-28
Hematopathology	September 9-28
Forensic Pathology	September 9-28
Medical Microbiology	September 9-28
Molecular Genetic Pathology	September 9-28
Neuropathology	September 9-28
Pediatric Pathology	September 9-28
Clinical Informatics (Pearson VUE)	October

FEEDBACK WELCOME



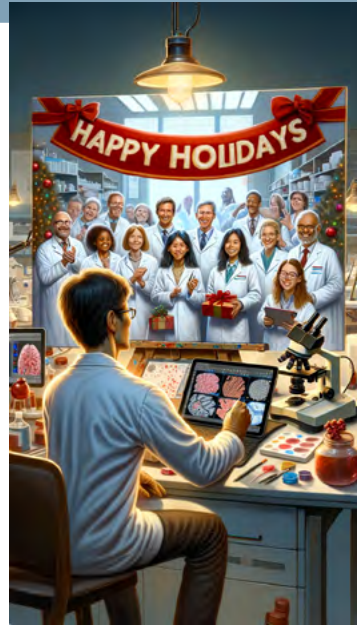
Have an idea for the Newsletter? Want to contribute to improving ABPath CertLink®?

We welcome your feedback and ideas.

Make your certification—and your voice—count!

Contact Chief Operating Officer Ty McCarthy coo@abpath.org

ABOUT THE COVER



The American Board of Pathology and its fellow Boards are exploring the transformative influence of artificial intelligence on the realms of certification and education. This summer, our Trustee meeting will focus on the advancements and implications of AI in our field. Embracing a spirit of innovation and experimentation, we've engaged ChatGPT's DALL-E 3 to bring to life a series of images depicting pathologists in the midst of holiday celebrations, rendered in various artistic styles including the classical grandeur of Rembrandt, the vibrant strokes of Impressionism, the fluidity of watercolors, and sculptures reminiscent of Michelangelo's mastery. At ABPath, we're excited to share these artistic interpretations with you, and we wish you a holiday season filled with joy, energy, and unforgettable moments.

CONTACT ABPATH



Main office:

One Urban Centre, Suite 690
4830 West Kennedy Boulevard
Tampa, Florida 33609
Telephone: (813) 286-2444
Fax: (813) 289-5279
www.abpath.org

Questions may be addressed to:
questions@abpath.org

Ty McCarthy Chief Operating Officer coo@abpath.org	Gary Procop, M.D. Chief Executive Officer
---	---

About the American Board of Pathology

The mission of the American Board of Pathology, as a member of the American Board of Medical Specialties, is to serve the public and advance the profession of pathology by setting certification standards and promoting lifelong competency of pathologists. Founded in 1936, the ABPath accomplishes this mission by establishing certification and continuing certification standards and assessing the qualifications of those seeking to obtain voluntary certification in the specialty of pathology.

Stay up to date with important news and information from ABPath. Visit abpath.org and follow us on social media.



Happy Holidays!

