

AMERICAN BOARD OF PATHOLOGY

Annual Report

2020

ADAPTING IN RESPONSE
TO THE GLOBAL PANDEMIC

One Urban Centre, Suite 690
4830 West Kennedy Boulevard
Tampa, Florida 33609
<https://www.abpath.org>



Thank you to Eric Glassy, MD for the design work on the Annual Report.

About The American Board of Pathology

WELCOME

The American Board of Pathology (ABPath) was established in 1936 to advance the specialty of pathology and ensure the competence of pathologists for the benefit of the public. Certification by the ABPath is a hallmark of public and professional trust. As we face new challenges in healthcare, the vital role of board-certified pathologists is more important than ever. Our Mission and Vision statements exemplify our commitment to promote excellence in pathology and maintain the highest standards of care.

WHAT WE DO

The American Board of Pathology issues primary certificates in Anatomic and Clinical Pathology, Anatomic Pathology, Clinical Pathology, Anatomic Pathology/Neuropathology.

MISSION

The mission of the American Board of Pathology, a member of the American Board of Medical Specialties, is to serve the public and advance the profession of pathology by setting certification standards and promoting lifelong competency of pathologists.

VISION

The American Board of Pathology improves the health of the public by promoting excellence in the practice of pathology.



STRATEGIC GOALS

1. Identify and implement relevant and meaningful processes for the assessment of residents and fellows in initial certification programs.
2. Increase the value of Continuing Certification programs by promoting lifelong learning, creating relevant assessments, and supporting diplomates in their efforts to stay current in their area of practice.
3. Increase diplomates' and other stakeholders' satisfaction with and perceived value of ABPath and certification.
4. Develop infrastructure and implement processes that support and promote strategic and organizational effectiveness.
5. Ensure long term financial viability of the ABPath.
6. Increase the effectiveness of the Board of Trustees.

STRATEGIC PLAN

ABPath continues to accomplish and update the objectives of its Strategic Plan as circumstances and priorities evolve. Major progress was made in the initial certification program with the successful administration of the 2020 Primary and Subspecialty remote exams, the adoption of the new autopsy requirement for initial certification, and the new Parental, Caregiver, and Extended Medical Leave policy. ABPath CertLink® was approved by the American Board of Medical Specialties as a permanent component of the ABPath Continuing Certification program and the requirements for self-assessment modules (SAMs) and a patient safety course have been eliminated. Based on the events of the past year, ABPath has added an objective to increase the diversity, equity, and inclusion of its Board of Trustees, staff, and committee volunteers. ABPath continues to refine processes and add capability to gain efficiency and has expanded the use of social media to improve communications with our stakeholders and increase transparency.

Message From The President



2020 was a year that saw great suffering around the world with a pandemic like one not seen in over a century and terrible events that highlighted major flaws in our society. The trustees and staff of the ABPath grieved but also accepted these great challenges both individually and as an organization. As apparent from listening to national news organizations, ABPath members were actively involved in furthering our basic vision to “improve the health of the public by promoting excellence in the practice of pathology”. The value of laboratorians and contribution of forensic pathology was highlighted and helped bring us to the better position we began to be in as my term drew to a close. The board as an organization sprang into action to be able to continue to function without compromising the health and safety of our diplomates and potential diplomates as well as our staff. Examinations were delayed but virtual alternative examinations were rapidly developed and taken advantage of by hundreds of trainees. Staff remained totally accessible to those who needed them even though they were all working largely from home. Everything was done in the spirit of compassion for those suffering whether it was because of illness or because all of a sudden children could no longer attend their schools or

early childhood educational facilities. Likewise, while ABPath has always emphasized ethics and professionalism, we have also embarked on an even more active program, together with our cooperating societies to further diversity, equity and inclusion in our field.

While the pandemic meant that the board had no in-person meetings together, I believed it was still critical that we continue our march towards doing not just what is absolutely required of us, but working diligently to enhance and better harmonize training with certification and what is needed for the practice of state-of-the-art pathology. Prior to my year as President, I started a small joint ABPath/ Society for Hematopathology project that led to the publication of “Harmonization of training, training requirements, board certification and practice of hematopathology” in 2019 (PMID 31338515). In May 2020, the board organized a virtual summit, together with our cooperating societies and others, chaired by a past-ABPath President and current trustee, Dr. Karen Kaul, to deal more broadly with these harmonization issues. We had a series of presentations related to autopsies, entrustable professional activities, the need for more independent practice and graduated responsibility in residency training, and novel program curriculum and structure.

We then broke out into smaller groups with the goal of “transforming challenges into tangible solutions”. We discussed autopsy training leading to competence, expectations for optimal independent practice experience during residency/readiness for practice and novel training program structures and the implications for ABPath certification. Our summer meeting, “Certification requirements and assessments – moving forward in a changing world” was facilitated by Dr. Dave Swanson, American Board of Medical Specialties Vice President for Certification Standards and Programs and by Dr. Scott Anderson, Chair of the Program Directors Section (PRODS) of the Association of Pathology Chairs. We continued our discussions from our summit leading to some immediate accomplishments, such as changes in the autopsy requirement and assessment of competence, establishing ways ABPath could begin to encourage greater independence in training and developing new question formats to pilot. In addition, we established longer term goals that have been embodied in our strategic plan.

We have now transitioned to our next President, Dr. Ed Ashwood, but want to make it very clear that the bottom line here is that the ABPath is here to serve the public, our diplomates, and those training in pathology as we strive to fulfill our mission, “to serve the public and advance the profession of pathology by setting certification

standards and promoting lifelong competency of pathologists”. We exist to promote the success of pathology trainees and ABPath diplomates, not to impede it. We take the input of our diplomates very seriously – the high stakes continuing certification examination is largely becoming a thing of the past and gone is the requirement for “SAMs” or a patient safety course. Finally, I want to thank, Dr. Rebecca Johnson our CEO, the other ABPath leaders and staff, and all the Trustees for their help and support this past year. I also want to thank the numerous volunteers who serve on our varied test development and advisory, and other committees and those who contribute much needed questions for ABPath CertLink®. Sadly Dr. Johnson will be retiring at the end of 2021, but I am pleased to also list among our accomplishments of 2020, the recruitment of Dr. Gary Procop as her successor. I remain honored to have served as your ABPath President and look forward to much brighter times.



Steven Swerdlow, MD
ABPath President 2020



The Year in Review

2020

AS TRAINING PROGRAMS ADAPTED, SO DID THE ABPATH

ADAPTATIONS DURING COVID-19

In March 2020, when the pandemic was first declared, ABPath navigated uncharted territory to meet the board certification needs of our candidates and diplomates. ABPath responded quickly to address the issues pathologists faced in obtaining and maintaining their certification, while many were faced with unprecedented challenges in their role on the front line.

RESIDENT TRAINING

In April 2020, the COVID-19 Training Policy was created. Some residents were concerned that mandated quarantines or contracting coronavirus could impact their eligibility for board certification. The policy allowed for absence from on-site training to count as clinical training if the resident/fellow arranged with their program director to continue learning and training activities. Residents/fellows kept a daily log of time spent and a brief description of their learning activities.

ABPath developed a temporary Autopsy Policy in May 2020 to support institutions and pathology training programs during COVID. Temporary exceptions to the requirements for a shared complete autopsy were made. This was intended to save on PPE and limit biohazard exposure for trainees.

The complete COVID-19 training policies can be found here:
<https://www.abpath.org/index.php/announcements/500-coronavirus-covid-19-training-autopsy-policy>

EXAMS

ABPath has always taken pride in delivering secure exams in our ABPath exam centers. As travel restrictions and the risk of exposure to COVID increased, ABPath regrettably canceled the spring 2020 Primary Exams. The work to offer remotely administered fall Primary and Subspecialty exams began immediately. In July, it was announced the 2020 fall Primary and Subspecialty exams would be administered as remote, secure, live tele-proctored exams.

ABPATH CERTLINK®

To ease concerns about meeting the ABPath CertLink (ABPCL) participation requirements, ABPath announced that there would be no jeopardy to a diplomate's certification for non-participation in ABPCL for the 1st and 2nd quarters of 2020 (January-June 30, 2020).



2020

THE VITAL ROLE OF PATHOLOGISTS DURING COVID-19

As the pandemic escalated, the essential role of pathologists became front and center. From playing an integral part in developing diagnostic tests to sharing what pathologists learned about the effects of the virus through autopsies, the importance of board-certified pathologists was more apparent than ever.

ASCP 2020
VIRTUAL

**State of the State:
The COVID-19
Pandemic**

*Gary W. Procop, MD, MS
Medical Director, Clinical Virology
Cleveland Clinic*

www.ascp.org/2020



NATIONAL MEDIA PIECES IN 2020

BARBARA SAMPSON, MD, PHD

Dr. Barbara Sampson, Chief Medical Examiner of New York City and ABPath Trustee spoke about the overwhelming task of caring for the unprecedented number of deceased during the peak of COVID-19 on CBS's 60 Minutes.



<https://www.cbsnews.com/news/covid-19-new-york-city-deaths-60-minutes-2020-04-19/>

KATHLEEN BEAVIS, MD ALEX VALSAMAKIS, MD, PHD

ABC News video featured Dr. Kathleen Beavis, ABPath Trustee and Dr. Alex Valsamakis, diplomate and former Molecular Genetic Pathology Test Committee member as they put a new COVID-19 test through one of its first runs.



<https://abcn.ws/2x3S378>

GARY PROCOP, MD, MS

Dr. Gary Procop, ABPath Life Trustee, was interviewed on National Public Radio discussing the federal push to expand testing capabilities in the fight against COVID-19.



<https://n.pr/3gCnoQt>



GARY W. PROCOP, MD, MS SELECTED AS CHIEF EXECUTIVE OFFICER

In November, it was announced that Dr. Gary W. Procop was selected as the new Chief Executive Officer of the ABPath beginning January 1, 2022. In this role, Dr. Procop will oversee all aspects of the ABPath's initial and continuing certification programs and guide the organization through its successful ongoing program improvements. Dr. Procop will succeed Dr. Rebecca L. Johnson as CEO after a transition period and upon her retirement on December 31, 2021. Read the full announcement here:

<https://www.abpath.org/index.php/announcements/493-the-american-board-of-pathology-announces-gary-w-procop-md-ms-as-chief-executive-officer-in-2022>

REBECCA L. JOHNSON, MD, ELECTED SECRETARY-TREASURER OF THE AMERICAN BOARD OF MEDICAL SPECIALTIES (ABMS)

Dr. Johnson was elected Secretary-Treasurer in June 2020. The ABMS Board of Directors guides the organization in continually evaluating and improving board certification and Continuing Certification programs.

<https://www.abpath.org/index.php/component/content/archive/2020/6>



AMERICAN MEDICAL ASSOCIATION EXPANDS ONLINE EDUCATION HUB

In July 2020, the American Medical Association (AMA) announced added enhancements to their online education portal AMA Ed Hub™, aimed at offering physicians a centralized location for finding, earning, tracking, and reporting continuing medical education (CME) and other education on a wide range of clinical and professional topics. The platform allows physicians who are board-certified with the American Board of Pathology to have their credits automatically reported to ABPath.

More information and other enhancements to their education portal can be found here:

<https://www.abpath.org/index.php/announcements/453-ama-expands-online-education-hub-and-offers-auto-reporting-to-abpath>



CME for
ABPath CC

NEW CERTIFICATION REQUIREMENT FOR AUTOPSIES

In August 2020, the ABPath announced the new Anatomic Pathology certification requirement for autopsies would now be 30 cases. The change is an interim adjustment until the autopsy requirement can become competency-based with the use of Entrustable Professional Activities (EPAs). The ABPath recognizes that the pathology training curriculum has significantly expanded to include such areas as molecular pathology, informatics, and laboratory management, and therefore reducing the numerical requirement was a reasonable adjustment. Using data from a survey of pathology residency program directors and discussions at a summit with ABPath Cooperating Societies, ABPath determined that 30 cases were a reasonable number for most residents to achieve competence in autopsy performance. The ABPath recognizes that some residents may require more cases to achieve competency and teaching and service obligations may require residents to perform more than 30 cases.

You can read more on the new requirement here: <https://www.abpath.org/index.php/announcements/458-autopsies>

NEW PARENTAL, CAREGIVER, AND EXTENDED LEAVE POLICY

In Sept 2020, ABPath announced a new Parental, Caregiver, and Extended Medical Leave Policy for residents. The new policy will offer trainees more flexibility, reduce stress, and increase autonomy in making life decisions, especially regarding family and parental leave, while still being able to meet board certification training requirements. This new policy is effective July 1, 2021 and applies only to residents. The ABPath policy is modeled after the new American Board of Medical Specialties (ABMS) "Policy on Parental, Caregiver and Family Leave" which was developed by the ABMS Task Force on Parental Leave, formed following a report from the Accreditation Council on Graduate Medical Education's (ACGME) Council of Review Committee Residents in June 2019. Read more about the ABPath policy here: <https://www.abpath.org/index.php/announcements/463-new-parental-caregiver-and-extended-medical-leave-policy>

30



Continuing Certification

CHANGES TO CONTINUING CERTIFICATION

In June 2020, the ABPath announced two changes to the Continuing Certification (CC) Program that were approved by the American Board of Medical Specialties. Beginning in 2021, the ABPath will no longer require:

- Self-Assessment Modules (SAMs) for Part II Lifelong Learning and Self-Assessment of the CC program
- Patient Safety Course. Participation in Patient Safety CME will be encouraged, but no longer required.

You can read more about those changes at: <https://www.abpath.org/index.php/announcements/448-abpath-announces-changes-to-the-continuous-certification-program-for-2021>

ABPATH CERTLINK® HIGHLIGHTS

In 2020, ABPath CertLink® completed its pilot phase and with approval from the ABMS Continuing Certification Committee, became a permanent component of the Continuing Certification (CC) program beginning in January 2021. ABPCL was developed in partnership with ABMS to better meet the needs of pathologists and enhance the Continuing Certification Assessment experience. ABPCL replaced the once every 10-year high stakes exam that diplomates were required to take to fulfill their CC Part III Assessment of Knowledge, Judgment, and Skills requirement.

ABPath  CertLink®



Current number of registered diplomates

ABPath Certlink® (ABPCL) was approved by the ABMS as a permanent change to Continuing Certification in 2021.

ABPATH CERTLINK® (ABPCL) ITEM WRITERS

ABPCL is successful due in part to the volunteer Item Writers who contribute questions to be used in the CertLink assessment. We are pleased to introduce our top two ABPCL volunteer item writers for 2020, Dr. Saloni Walia and Dr. Maria Cecilia Reyes. Both contributed at least 48 items to reach the Platinum tier of the ABPath Item Writer Volunteer program! We thank them for their dedication to Continuing Certification and the specialty of pathology.



Dr. Maria Cecilia Reyes has been contributing questions for over two years and has participated in ABPCL since the program's inception. "I think Continuing Certification is important as a means for pathologists to continually educate themselves throughout their careers in the fields that are relevant to them individually and their practice. It motivates them to stay updated in their specialty. I contribute to ABPCL because I think it is an honor to contribute questions to ABPath and it helps me in my own continuing education. I test others, so I have to keep updated myself."

Dr. Maria Cecilia Reyes is an Assistant Professor at the University of Rochester Medical Center and is board certified in ACP and Cytopathology. She began her career in ophthalmic pathology at Bascom Palmer Eye Institute in Miami and later transitioned to an ACP residency in the Barnabas Health System in New Jersey. She went on to Roswell Park Cancer Institute where she completed Cytopathology and Oncologic Surgical Pathology fellowships.

Dr. Walia has been a volunteer item writer and a participant in ABPCL for almost two years. She believes ABPCL is a wonderful knowledge assessment tool for Continuing Certification that covers topics that are relevant to everyday practice. Item writing is a process that involves both learning and teaching and Dr. Walia has thoroughly enjoyed being part of this process. "I believe that CertLink is a very impressive program developed by the American Board of Pathology that supports lifelong learning and provides feedback on knowledge gaps. Each item is carefully evaluated by the editorial board for content and writing style, and I feel reassured that my contributions are well-vetted and meaningful."



Dr. Saloni Walia is Assistant Professor of Clinical Pathology at Keck School of Medicine at the University of Southern California. She completed her residency training and Surgical Pathology & Cytopathology fellowships at Los Angeles County and the University of Southern California Medical Center. She is ABPath certified in ACP and Cytopathology. Her subspecialty interests are in Cytopathology, Gynecologic Pathology and Breast Pathology. Outside of work, Dr. Walia enjoys spending time with her husband and two kids.

Cooperating Societies

The ABPath has 13 Cooperating Societies that we collaborate with to identify and address issues of importance to the profession of pathology. Through these valuable relationships, our Cooperating Societies support diplomates in their life-long learning and improvement in practice, their participation in Continuing Certification, and documenting their participation in educational and quality assessment activities.

The Societies' participation in our annual ABPath Summit of Cooperating Societies has been especially beneficial as training requirements for board certification evolve. In 2020, our Trustees met virtually with the Societies and discussed autopsy training requirements and competency, graduated responsibility and readiness for practice, and novel training program structures.

LIST OF SOCIETIES

- Academy of Clinical Laboratory Physicians and Scientists
- American Medical Association Pathology Section Council
- American Society for Clinical Pathology
- American Society for Investigative Pathology
- American Society of Cytopathology
- Association for Molecular Pathology
- Association of Directors of Anatomic and Surgical Pathology
- Association of Pathology Chairs
- College of American Pathologists
- National Association of Medical Examiners
- Society for Hematopathology
- Society for Pediatric Pathology
- United States and Canadian Academy of Pathology



COLLEGE of AMERICAN
PATHOLOGISTS



ASCP
AMERICAN SOCIETY OF
Cytopathology



Society for Hematopathology



Association of Directors of Anatomic and Surgical Pathology

ASIP

American Society for Investigative Pathology

THE NATIONAL ASSOCIATION OF MEDICAL EXAMINERS

In November 2020, ABPath welcomed the National Association of Medical Examiners (NAME) as our newest Cooperating Society. NAME was founded in 1966 and currently has 1,700 members, including 700 Forensic Pathologists certified by the American Board of Pathology. The organization provides leadership and advocacy for best practices and excellence in forensic pathology and death investigation.



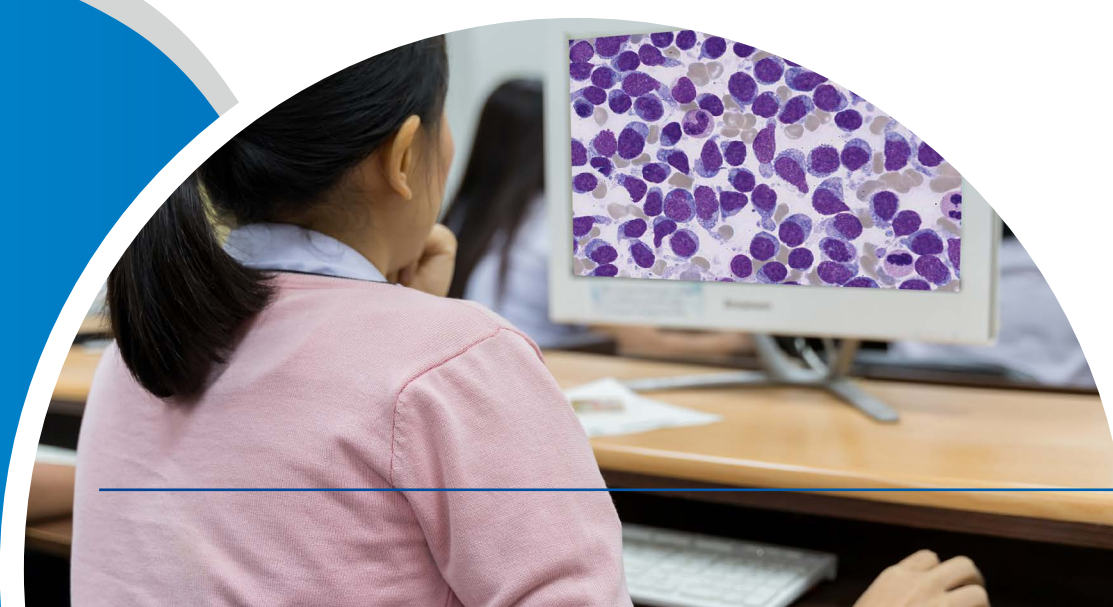
Board Certification Examinations

ADMINISTRATION HISTORY OF ABPATH CERTIFICATION

ABPath offers four Primary certificates and 11 Subspecialty certificates in pathology. This report reflects when we began offering each primary and subspecialty certification and how many certificates have been issued from inception through 2020.

Certification	Initial Year	Number of Certificates
Anatomic Pathology (AP)	1936	9,511
Anatomic Pathology and Clinical Pathology (AP/CP)	1936	24,236
Anatomic Pathology and Neuropathology (AP/NP)	1961	422
Clinical Pathology (CP)	1936	3,870
Blood Banking/Transfusion Medicine (BB/TM)	1973	1,576
Chemical Pathology (CH)	1951	182
Clinical Informatics* (CI)	2013	158
Cytopathology (CY)	1989	4,660
Dermatopathology* (DP)	1974	1,780
Forensic Pathology (FP)	1959	1,717
Hematopathology (HP)	1955	3,259
Medical Microbiology (MB)	1950	369
Molecular Genetic Pathology* (MG)	2001	680
Neuropathology (NP)	1948	607
Pediatric Pathology (PP)	1990	575

*co-sponsored with another board



Primary Exam Statistics

ABPath examinations are graded using the criterion-referenced using a criterion-referenced standard. For more information about examinations, please refer to the ABPath website at abpath.org.

ANATOMIC AND CLINICAL PATHOLOGY

	Total Candidates		First-Time Takers			Repeaters		
	#	% Pass	#	# Pass	% Pass	#	# Pass	% Pass
AP	592	85%	537	480	89%	55	21	38%
CP	509	88%	464	425	92%	45	22	49%

5-YEAR CERTIFIED REPORT

Primary	2016	2017	2018	2019	2020
APCP	484	498	485	451	397
AP only	79	72	78	58	73
CP only	36	50	43	40	25
APNP	7	14	11	10	8

Primary	2016 % Pass	2017 % Pass	2018 % Pass	2019 % Pass	2020 % Pass
AP only	84	90	89	82*	85
CP only	89	94	92	85*	88

*New criterion standard applied

EXAM RELIABILITY AND VALIDITY

To maintain the reliability and validity of the exams, ABPath conducts standard setting of each of the exams every three to five years by a committee of experts in the field to establish the criterion standard (passing or "cut-off" score). Criterion-referenced tests (CRTs) are intended to measure how well a person has learned a specific body of knowledge and skills. The candidate's performance (i.e. mastery of the subject matter) is compared to the cut-off score and not to other test takers. Theoretically, all candidates could pass or fail depending on how they performed relative to the passing score.

Subspecialty Exam Statistics

2020 SUBSPECIALTY EXAMINATIONS

	Total Candidates		First-Time Takers			Repeaters		
	#	% Pass	#	# Pass	% Pass	#	# Pass	% Pass
BB/TM	44	89	43	39	91	1	0	0
CH	2	100	2	2	100	-	-	-
CI	19	89	18	16	89	1	1	100
CY	126	86	122	107	88	4	1	25
DP	38	95	37	36	97	1	0	0
FP	57	89	52	49	94	5	2	40
HE	129	94	127	121	95	2	0	0
MB	6	100	6	6	100	-	-	-
MG	49	98	48	47	98	1	1	100
NP	26	100	25	25	100	1	1	100
PP	18	89	17	16	94	1	0	0
FPclinMB*	1	100	1	1	100	-	-	-

*FPclinMB = Focus Practice Designation-ClinicalMicrobiology

5-YEAR CERTIFIED REPORT

Subspecialty	2016	2017	2018	2019	2020
BB/TM	57	49	49	47	39
CH	2	1	2	1	2
CI	25	16	16	18	17
CY	144	141	142	137	104
DP	56	43	52	45	34
FP	48	41	49	38	47
HE	142	125	140	119	116
MB	7	9	12	14	6
MG	57	45	59	59	48
NP	12	17	15	12	17
PP	21	16	20	23	16
FPclinMB**	-	-	-	-	1

*FPclinMB = Focus Practice Designation-ClinicalMicrobiology



5-YEAR CERTIFIED REPORT

Subspecialty	2016 % Pass	2017 % Pass	2018 % Pass	2019 % Pass	2020 % Pass
BB/TM	85	89	89	96	89*
CH	-	100	100	100	100
CI	74	73	94	78	89
CY	91	98	98	96	86*
DP	95	90	90*	98	95
FP	89	91	94	93	89*
HE	96*	98	98	97	94*
MB	100	90*	100	100	100
MG	95	92	98	98	98*
NP	95	94	100*	96	100
PP	81	84	81*	96	89
FPclinMB**	-	-	-	-	100

*New criterion standard applied **FPclinMB = Focus Practice Designation-Clinical Microbiology

Continuous Certification Statistics

CC PARTICIPANTS

	2016	2017	2018	2019	2020
Certificates Enrolled	1176	1132	1175	1054	933
Certificates Lapsed/ Revoked	64	75	88	88	64
Diplomates Enrolled	627	650	638	583	519
Diplomates Lapsed/ Revoked	52	64	71	63	52

CC EXAMINATION STATISTICS

CC EXAMS	Total Candidates	% Pass
Fall 2020	126	96.8
Spring 2020	283	98.6
Fall 2019	238	96
Spring 2019	362	97.8
Fall 2018	371	96.2
Spring 2018	340	97.1
Fall 2017	333	95.8
Spring 2017	264	97.7
Fall 2016	318	99.7
Spring 2016	449	100

*2020 was the last year the CC exam was required to meet the assessment requirement.

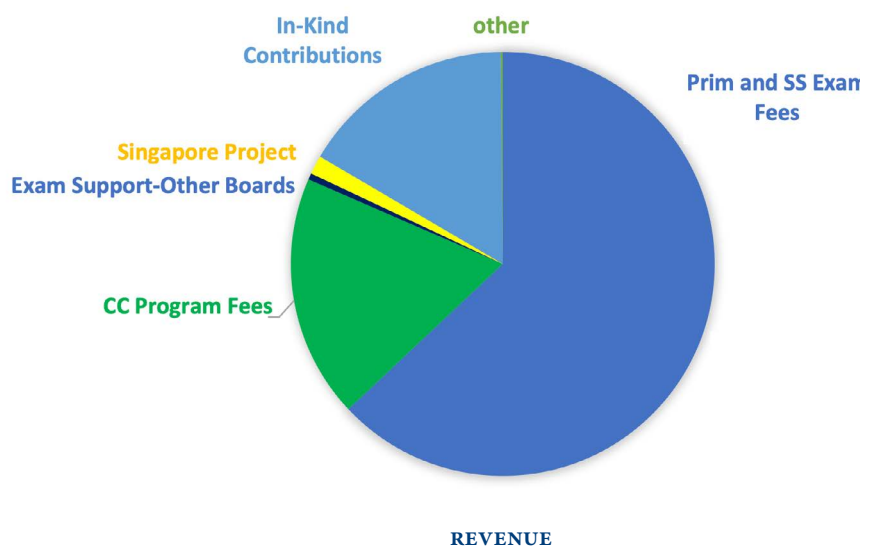
Financial Report

FOR FISCAL YEAR 2020

REVENUE

ABPath revenue is generated from multiple sources. Candidates pay examination fees for the Primary, Subspecialty, and Continuing Certification exams and diplomates pay a fee for administration of the Continuing Certification program. The ABPath supports three other boards for administration of their exams each year to include use of the ABPath Exam Center; due to COVID the ABPath Exam Center was not utilized in 2020. The Singapore Project is the support ABPath provides for pathologists' certification in Singapore. Examination questions are written by volunteer pathologists. Per the IRS, their services must be reported as an In-Kind Contribution (equivalent time a pathologist would be paid had they charged for these services).

	2020 %	2020 \$
Revenue		
Primary/SS Examination Fees	62.99%	\$ 2,635,590
CC Program Fees	18.54%	\$ 775,600
Exam Support-Other Boards	0.49%	\$ 20,705
Singapore Project	1.43%	\$ 60,000
In-Kind Contributions	16.40%	\$ 686,205
Other	0.15%	\$ 6,289
Total Revenue		\$ 4,184,389



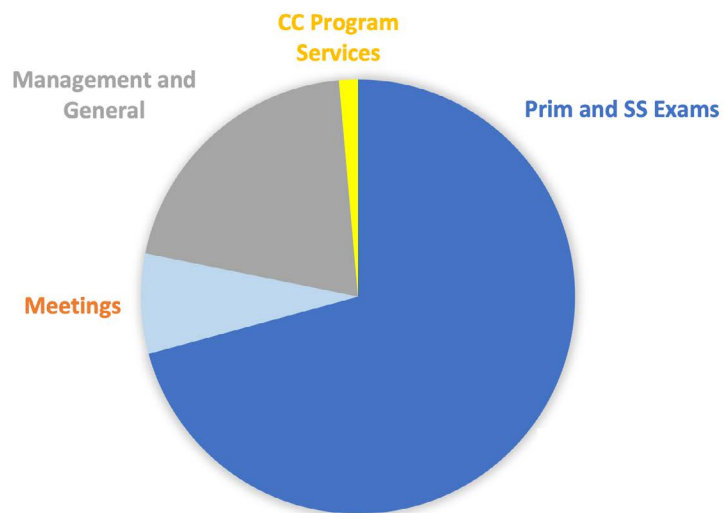


EXPENSES

Examination expenses cover the cost of credentialing candidates; the development, administration, and scoring of the exams, and reporting results.

Meeting expenses include the travel and administrative expenses for volunteer test committee members and Trustees. Management and general expenses include employee salaries, benefits, insurance, information technology support and licensing, facility and equipment rental and maintenance, ABMS member fees, and the cost of providing services to our diplomates, such as ACCME PARS. CC Program Services includes all of the above type expenses that are directly affiliated with the CC Program to include ABPath CertLink®.

	2020 %	2020 \$
Expenses		
Primary/SS Program Services		
Examinations	60.36%	\$ 3,781,094
Meetings	6.35%	\$ 397,575
Management & General	17.40%	\$ 1,090,283
CC Program Services	15.89%	\$ 995,249
Total Expenses		\$ 6,264,201



EXPENSES

The 2020 Board of Trustees

The ABPath is governed by 12 physician members and one public member. Each member is highly esteemed and accomplished in their respective fields and subspecialty. ABPath Trustees are responsible for setting the strategic goals and governing and upholding the integrity of the Board's mission to serve the public and advance the profession of pathology by setting certification standards and promoting lifelong competency of pathologists.



STEVEN H. SWERDLOW, MD

President
Director, Division of Hematopathology at the University of Pittsburgh School of Medicine; Professor of Pathology



MICHAEL A. JONES, MD

Vice President
Chief of Pathology and Laboratory Medicine at Maine Medical Center in Portland, Maine; Clinical Associate Professor of Pathology at Tufts /Maine Medical Center Medical School



EDWARD R. ASHWOOD, MD

Secretary
Director of Laboratories at UHealth, University of Colorado Hospital; Professor of Pathology, University of Colorado



JEFFREY D. GOLDSTEIN, MD

Treasurer
Clinical Chief of Pediatric Pathology at Mattel Children's Hospital and Ronald Reagan UCLA Medical Center; Senior Physician at David Geffen School of Medicine, UCLA



SUSAN A. FUHRMAN, MD

Immediate Past President
System Director for Pathology and Laboratory Services at Ohio Health; Chair of Pathology; Director of Laboratories at Riverside Methodist Hospital in Columbus, Ohio

Officers



KATHLEEN G. BEAVIS, MD

Director of the Clinical Microbiology and Immunology Laboratories and Medical Director, Laboratories' Quality, in the Department of Pathology at the University of Chicago



CONSTANCE M. FILLING, EdD

Public Member
Chief Learning Officer at the Association of American Medical Colleges



MOHIEDEAN GHOFRANI, MD, MBA

System Medical Director for Laboratory Services and Director of Cytopathology and Women's Health at PeaceHealth Southwest Medical Center in Vancouver, Washington



ERIC F. GLASSY, MD

Laboratory Director at Little Company of Mary Hospital, San Pedro, CA



KAREN L. KAUL, MD, PhD

Chair of the Department of Pathology and Laboratory Medicine at North-Shore University Health System in Evanston, Illinois; Clinical Professor of Pathology at the University of Chicago Pritzker School of Medicine



RITU NAYAR, MD

Vice-Chair of Education and Faculty Development; Professor of Pathology at Northwestern University, Feinberg School of Medicine; Medical Director of Cytopathology at Northwestern Memorial Hospital in Chicago, IL



BARBARA SAMPSON, MD, PhD

Chief Medical Examiner of the City of New York



JAMES R. STUBBS, MD

Medical Director of the Component Laboratory and the Operational Support Unit for Transfusion Medicine at Mayo Clinic Rochester (MCR); Medical Director of the Laboratory Compliance and FDA-Regulated Activities Offices for the Mayo Clinic Enterprise; Physician Liaison for the Mayo Clinic Infusion Therapy Center

ABPath Volunteers

2020 TEST DEVELOPMENT AND ADVISORY COMMITTEES (TDAC)

The ABPath appreciates the many contributions of our Test Development and Advisory Committee members who volunteer their time as subject matter experts to provide direction and content for certification examinations. Each of the committees is chaired by an ABPath Trustee. During this difficult year, our TDAC members worked efficiently and effectively using virtual meetings. We thank them for contributing all of their time and talents.

ANATOMIC PATHOLOGY

Chair: Michael A. Jones, MD
Laura Christine Collins, MD
Deborah L. Cook, MD
David Grignon, MD
Robert P. Hasserjian, MD
John P. Higgins, MD
Jason L. Hornick, MD
Kirk D. Jones, MD
Susan Muller, MD
Rhonda Yantiss, MD

ANATOMIC PATHOLOGY CERTLINK®

Chairs: Eric Glassy, MD and
Ritu Nayar, MD
Ahmed Alomari, MD
Luis Blanco, MD
Kyle T. Bradley, MD
Greg G. Davis, MD
Sarah Gibson, MD
Matthew Kuhar, MD
Aparna Mahajan, MD
Marcus Bartholomew Nashelsky, MD
Ajit S. Paintal, MD
Anil Parwani, MD
W. Dean Wallace, MD

BLOOD BANKING/ TRANSFUSION MEDICINE

Chair: James Stubbs, MD
Kendall Paul Crookston, MD
Meghan Delaney, MD
Magali Fontaine, MD
Mark Fung, MD
Marisa B. Marques, MD
Darrell J. Triulzi, MD

CHEMICAL PATHOLOGY

Chair: Edward Ashwood, MD
Andrew Hoofnagle, MD
Gary L. Horowitz, MD
Martin H. Kroll, MD
Stacy E. Melanson, MD
Elizabeth Sykes, MD

CLINICAL PATHOLOGY CERTLINK®

Chair: Susan Fuhrman, MD
Elizabeth Courville, MD
Thomas Davis, MD
Jennifer Laudadio, MD
Sean Li, MD
Mark Lovell, MD
Robin Patel, MD
Nancy Rosenthal, MD
Karl S. Theil, MD

CYTOPATHOLOGY

Chair: Ritu Nayar, MD
Kristen Atkins, MD
Deborah Chute, MD
Carrie Marshall, MD
Swati Mehrotra, MD
Tolgay Ocal, MD
Momin Siddiqui, MD
Laura Tabatabai, MD

DERMATOPATHOLOGY

(Includes ABPath and American Board of Dermatology appointees)

Chair: Mohiedean Ghofrani, MD
Jenny P. Cotton, MD, Ph.D.
Tammie Ferringer, MD
Maxwell Fung, MD
Ryan Hick, MD
Matthew Kuhar, MD
Douglas C. Parker, MD
Melissa Piliang, MD
Uma Sundram, MD
Claudia Vidal, MD

FORENSIC PATHOLOGY

Chair: Barbara Sampson, MD
Maura DeJoseph, MD
Kelly C. Lear, MD
Jonathan R. Lucas, MD
Owen Lee Middleton, MD
Erin Presnell, MD
Robert Ross Reichard, MD

HEMATOPATHOLOGY

Chair: Steven Swerdlow, MD
Dan Arber, MD
Dong Chen, MD
James R. Cook, MD
Russell Higgins, MD
Lori Soma, MD
Carla Wilson, MD

TDAC
Test Development and
Advisory Committees

MANAGEMENT AND INFORMATICS

Chair: Susan Fuhrman, MD
Sterling Bennett, MD
Donald Karcher, MD
Bruce Levy, MD
Michael L. Talbert, MD

MEDICAL MICROBIOLOGY

Chair: Kathleen Beavis, MD
Randall T. Hayden, MD
Gordon L. Love, MD
Cindy McCloskey, MD
Robin Patel, MD
Carol A. Rauch, MD, PhD
Kamaljit S. Singh, MD
Charles W. Stratton, MD

MOLECULAR GENETIC PATHOLOGY

(Includes ABPath and American Board of Medical Genetics and Genomics appointees)

Chair: Karen Kaul, MD
Miriam G. Blitzer, PhD
Jessica Booker, PhD
Aaron D. Bossler, MD, PhD
Bobby Boyanton, MD
Allison Cushman-Vokoun, MD
Julie Gastier-Foster, PhD
Jane Gibson, MD
Jennifer Laudadio, MD
Karen Mann, MD

NEUROPATHOLOGY

Chair: Eric Glassy, MD
Daniel J. Brat, MD
Anne Buckley, MD
Edward Lee, MD
Maria Beatriz S. Lopes, MD
Suzanne Powell, MD
Matthew Schniederjan, MD
Anthony Yachnis, MD

PEDIATRIC PATHOLOGY

Chair: Jeffrey Goldstein, MD
Monique E. DePaepe, MD
Laura S. Finn, MD
Jason Jarzembowski, MD
Philip J. Katzman, MD
Kathleen K. Nicol, MD
Charles Timmons, MD

CC ADVISORY COMMITTEE

The Continuing Certification (CC) Advisory Committee is made up of 12 volunteer diplomates with diverse backgrounds, specialties, and experience. It is chaired by an ABPath Trustee. The Committee advises and provides feedback to the ABPath Board of Trustees for continuous evaluation and improvement of Continuing Certification from a diplomate's perspective. Members serve three years on the Committee.

2020 COMMITTEE MEMBERS

Michelle Aurelius, MD
Nick Batalis, MD
Jennifer Findeis-Hosey, MD
Timothy Harkcom, DO
Jennifer Kasten, MD
Julie Kingery, MD
Eric Konnick, MD, PhD
Matthew Kuhar, MD
J. Jordi Rowe, MD
Roseann Wu, MD, MPH
Matthew Wasco, MD
Debra L. Zynger, MD

**CC Advisory
Committee**
Continuing Certification

RESIDENT AND FELLOW ADVISORY COMMITTEE

The ABPath Resident and Fellow Advisory Committee is made up of 11 Pathology Residents and Fellows who were selected to provide feedback and suggestions for improvement to the board certification process.

2020 COMMITTEE MEMBERS

Adam L. Booth, MD
Brian Cox, MD
Hanadi El Achi, MD
Alexander Z. Feldman, MD
Aidas J. Mattis, MD
Mariam Molani, MD
Kelly Lynn Mooney, MD
David J. Papke, Jr., MD
Tayler van den Akker, MD
Neda Wick, MD
Nicholas Zoumberos, MD

**Resident
& Fellow**
Advisory Committee



ABPath Publications

The following research paper was supported by the ABPath in 2020. ABPath collaborated on this JAMA article assessing the accuracy of current pathologist workforce estimates in the US by examining why discrepancies appear in different published resources.

Reevaluation of the US Pathologist Workforce Size

JAMA Open Network, July 2020

<https://www.abpath.org/index.php/article/533-reevaluation-of-the-us-pathologist-workforce-size-2>

Additional ABPath publications can be found on the

ABPath website at the link below:

<https://www.abpath.org/index.php/our-organization/journal-publications>



ABPath Staff

Our staff is proud to support the ABPath mission and strategic goals. They work very hard to support our candidates and diplomates in achieving and maintaining their board certification.

THE 2020 ABPATH STAFF

Aaron Douglas	Director of Psychometrics and Research
Alissa Emmons	Administrative Assistant
Amanda Zombro	Coordinator of Information Services
Anthony Schlinsog	Chief Information Officer
Bonnie Woodworth	Communications Director
Clarita Scioscia	TDAC Coordinator
Colette Earnest	Diplomate Success Specialist
Geri Wills	Accountant
John Lemke	Continuing Certification Coordinator
Josie Santos.....	Chief Financial Officer
Kasey Davis.....	ABPath CertLink Coordinator
Mario Levesque	Senior Systems Developer
Mary Pyfrom.....	Primary Certification Coordinator
Patty Schnoor.....	Slide Librarian
Reneé Holder.....	Subspecialty Certification Coordinator
Rebecca L. Johnson, MD.....	Chief Executive Officer
Ty McCarthy.....	Chief Operating Officer



AMERICAN BOARD OF PATHOLOGY

4830 W. Kennedy Blvd.
Suite 690
Tampa, FL 33609
(813) 286-2444
FAX: 813-289-5279
www.abpath.org

Rebecca L. Johnson, MD
Chief Executive Officer
rljohnson@abpath.org

Ty McCarthy
Chief Operating Officer
coo@abpath.org

Primary Certification
mary@abpath.org

Subspecialty Certification
renee@abpath.org

Continuing Certification
john@abpath.org

ABPath CertLink®
abpath@mycertlink.org

General Inquiries
questions@abpath.org

Follow the American Board of Pathology (ABPath) on LinkedIn, Facebook, Twitter and Instagram